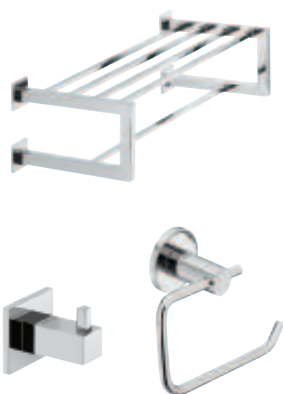


9

HÄFELE

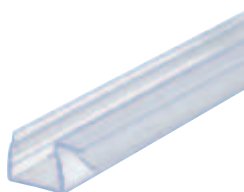
SANITARY FITTINGS





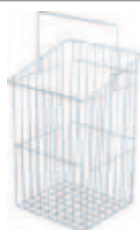
Bathroom fittings and accessories

Drawer inserts	9.3
Bathroom accessories for screw fixing, square	9.6
Bathroom accessories for screw fixing, round	9.15
Classic series	9.25
Cosmetic tissue dispensers	9.27
Hair dryers	9.28
Bathroom mirror	9.29
Architectural hardware	9.48



Fittings for shower cubicles

Shower door fittings	9.30, 9.32
Glass clamps	9.31, 9.33
Stabilising rods	9.35
Seals	9.36



Laundry baskets and waste bins

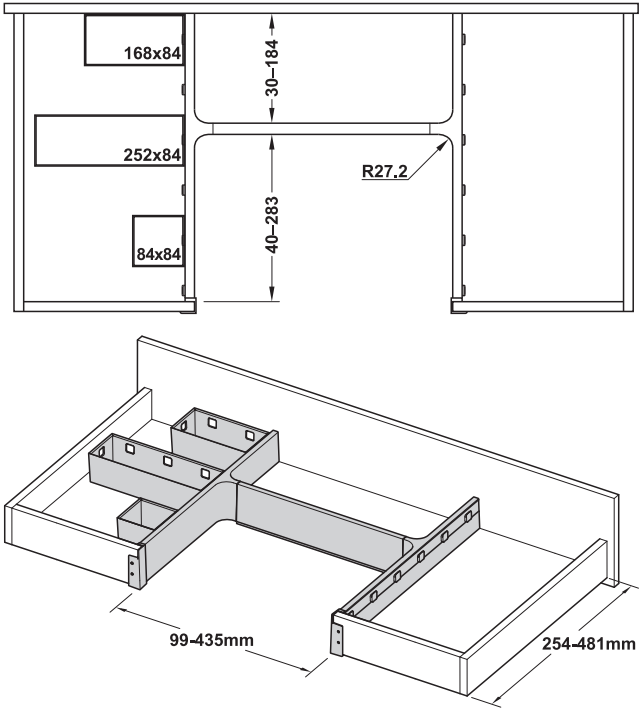
Laundry baskets	9.38
Waste bins	9.40



Partition wall systems

Partition wall system for sanitary facilities, aluminium	9.41
Partition wall system for sanitary facilities, stainless steel	9.44

Bathroom storage and organization system



H frame



- > Suitable for: Universal drawers
- > Version: Length and width adjustable by cutting the centre and side components
- > Material: Plastic

Supplied with
2 x side components
1 x centre component
2 x positioning strips
2 x rear panel connectors

Colour	Cat. No.
White	556.23.704

Packing: 1 set

Trays



- > Suitable for: H frame or freestanding
- > Version: Robust and easy to clean
- > Material: Plastic
- > Finish/colour: White translucent
- > Dim.: Small tray: 65 x 84 x 84 mm, medium tray: 65 x 168 x 84 mm, large tray: 65 x 251 x 84 mm

Supplied with	Cat. No.
1 x small, 1 x medium, 1 x large	556.23.728
2 x small, 2 x medium, 2 x large	556.23.729

Packing: 1 set



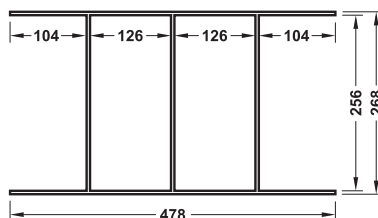
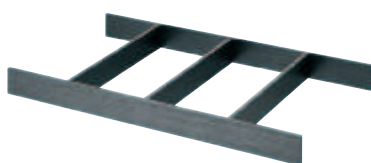
Cosmetic insert

For drawer



- > Suitable for: Drawers
- > Material: Core ash
- > Finish/colour: Stained, black

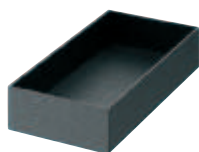
→ Frame



- > Version: Depth can be cut to size

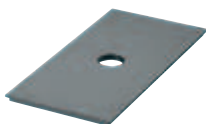
Dim. (W x D x H) mm	Cat. No.
268 x 478 x 43	550.35.300

→ Tray for frame



Dim. (W x D x H) mm	Cat. No.
255 x 125 x 55	550.35.310

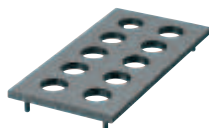
Lid



- > Area of application: For tray for frame 43/6, for box for frame 110/8

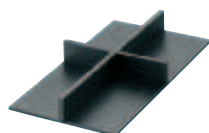
Dim. (W x D x H) mm	Cat. No.
254.5 x 124.5 x 8	550.35.320

→ Lipstick insert for frame



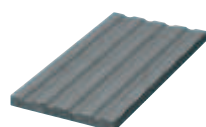
Dim. (W x D x H) mm	Cat. No.
255 x 125 x 29	550.35.330

→ Cross divider insert for frame



Dim. (W x D x H) mm	Cat. No.
255 x 125 x 29	550.35.340

→ Pen and pencil insert for frame



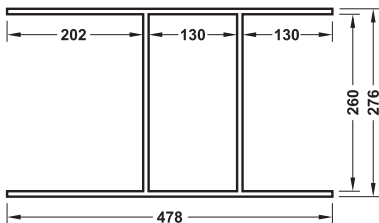
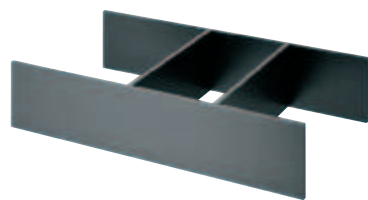
Dim. (W x D x H) mm	Cat. No.
255 x 125 x 12	550.35.350

Cosmetic insert
For pull out



- > Suitable for: Pull outs
- > Material: Core ash
- > Finish/colour: Stained, black

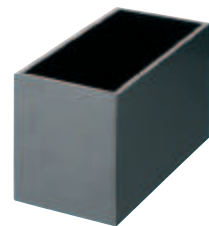
→ Frame



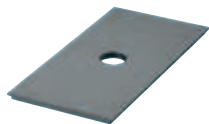
- > Version: Depth can be cut to size

Dim. (W x D x H) mm	Cat. No.
276 x 478 x 110	550.35.301

→ Box for frame



Lid

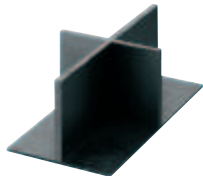


Dim. (W x D x H) mm	Cat. No.
259 x 129 x 156	550.35.360

- > Area of application: For tray for frame 43/6,
for box for frame 110/8

Dim. (W x D x H) mm	Cat. No.
254.5 x 124.5 x 8	550.35.320

→ Cross divider insert for frame

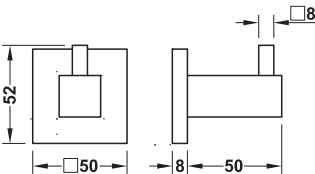


Dim. (W x D x H) mm	Cat. No.
259 x 129 x 100	550.35.370

Square

> Material	Brass
> Finish	Polished chrome plated or graphite black
> Installation	For screw fixing

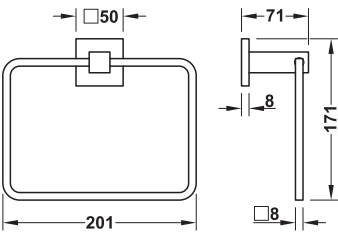
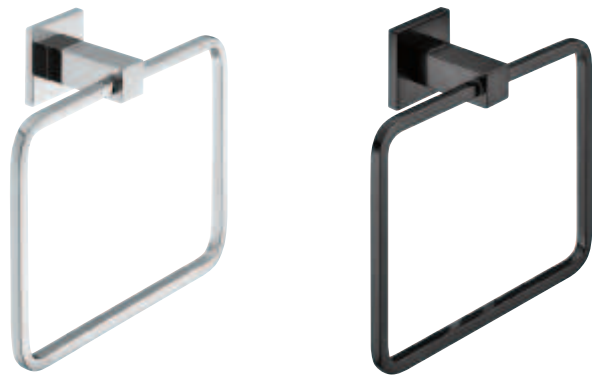
→ Towel hook



Supplied with
1 towel hook
Fixing material

Finish/colour	Cat. No.
Polished chrome plated	980.60.642
Graphite black	980.60.643

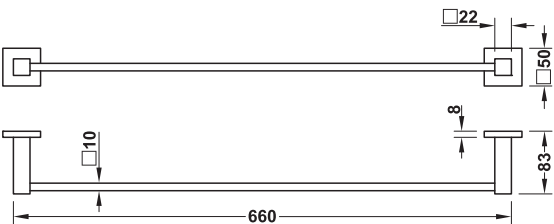
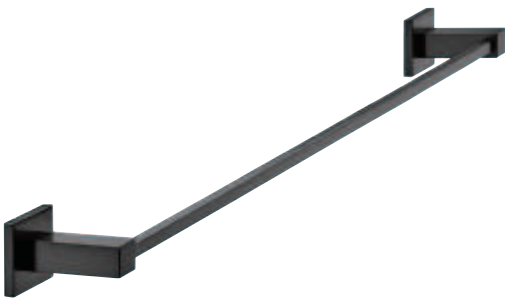
→ Towel rail



Supplied with
1 towel rail
Fixing material

Finish/colour	Cat. No.
Polished chrome plated	980.60.672
Graphite black	980.60.673

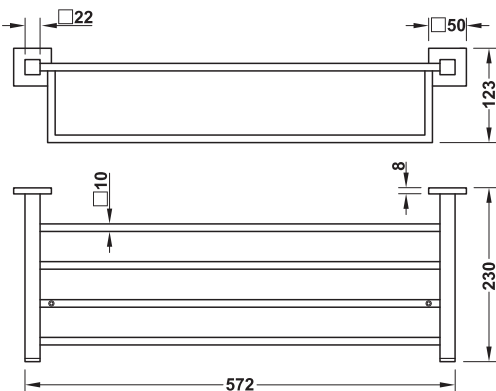
→ Towel rail



Supplied with
1 towel rail
Fixing material

Finish/colour	Cat. No.
Polished chrome plated	980.60.712
Graphite black	980.60.713

→ Towel shelf with towel rail

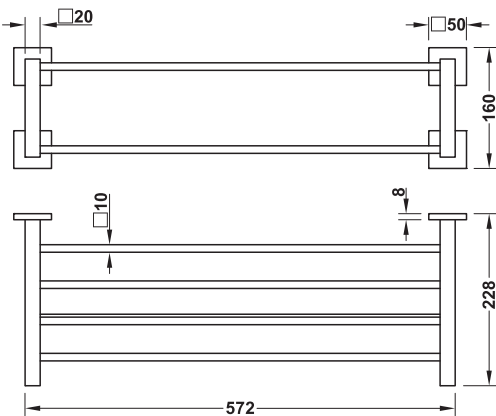
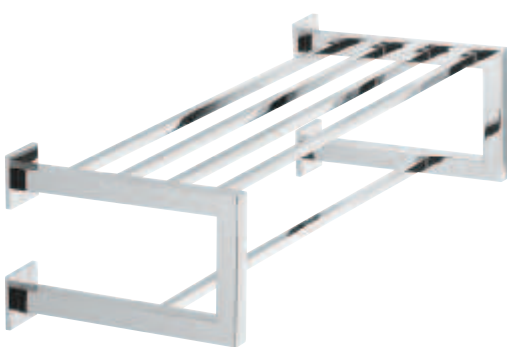


Supplied with
1 towel shelf with towel rail
Fixing material

Finish/colour	Cat. No.
Polished chrome plated	980.60.752
Graphite black	980.60.753



→ Towel shelf with towel rail

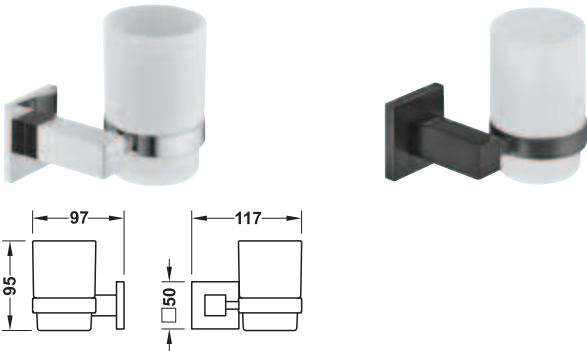


Supplied with
1 towel shelf with towel rail
Fixing material

Finish/colour	Cat. No.
Polished chrome plated	980.60.722
Graphite black	980.60.723



→ Glass holder, with satin frosted tumbler



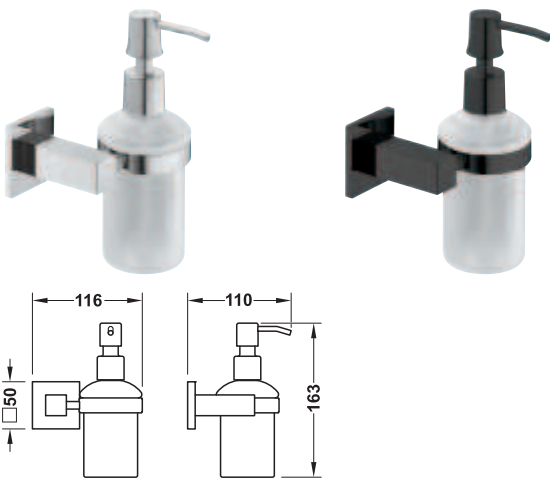
> Capacity: 200 ml

Supplied with
1 glass holder with satin frosted tumbler
Fixing material

Finish/colour	Cat. No.
Polished chrome plated	980.60.652
Graphite black	980.60.653

Order reference
Replacement tumbler available on request.

→ Soap dispenser, with satin frosted glass



> Capacity: 300 ml

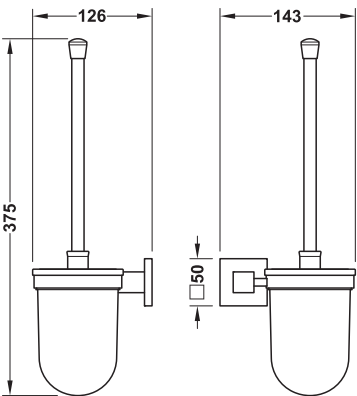
Supplied with
1 soap dispenser with satin frosted glass
Fixing material

Finish/colour	Cat. No.
Polished chrome plated	980.60.662
Graphite black	980.60.663

Order reference
Replacement glass and pump available on request.



→ WC brush set, with satin frosted glass



> Version: Brush head, black, replaceable

Supplied with
1 WC brush set with satin frosted glass and brush
Fixing material

Finish/colour	Cat. No.
Polished chrome plated	980.60.682
Graphite black	980.60.683

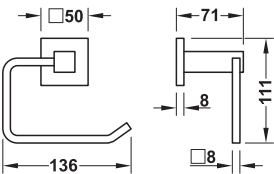
Brush head for WC brush set



> Material: Plastic
> Installation: With screw thread

Finish/colour	Cat. No.
Black	980.60.943

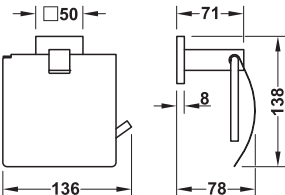
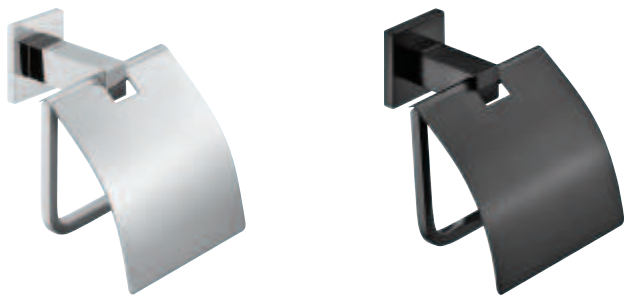
→ Toilet roll holder



Supplied with
1 toilet roll holder
Fixing material

Finish/colour	Cat. No.
Polished chrome plated	980.60.692
Graphite black	980.60.693

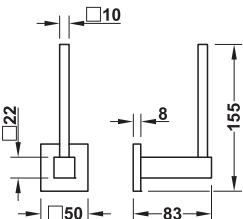
→ Toilet roll holder, with hood



Supplied with
1 toilet roll holder, with hood
Fixing material

Finish/colour	Cat. No.
Polished chrome plated	980.60.702
Graphite black	980.60.703

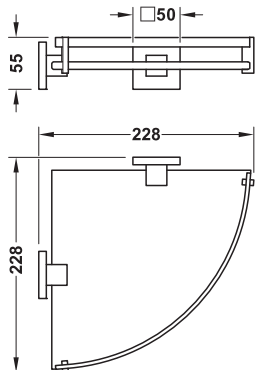
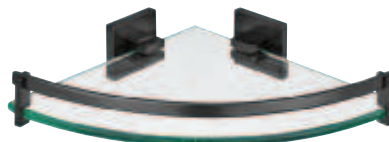
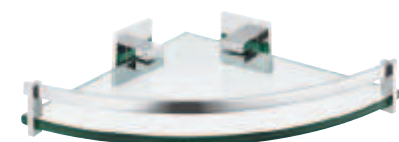
→ Toilet roll holder



Supplied with
1 spare toilet roll holder
Fixing material

Finish/colour	Cat. No.
Polished chrome plated	980.60.762
Graphite black	980.60.763

→ Corner shelf, with clear glass pane



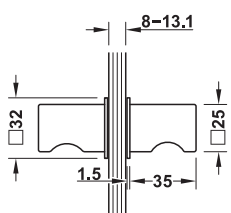
- > Material: Brass, clear glass
- > Glass thickness: 8 mm

Supplied with
1 corner shelf, with clear glass
Fixing material

Finish/colour	Cat. No.
Polished chrome plated	980.60.732
Graphite black	980.60.733



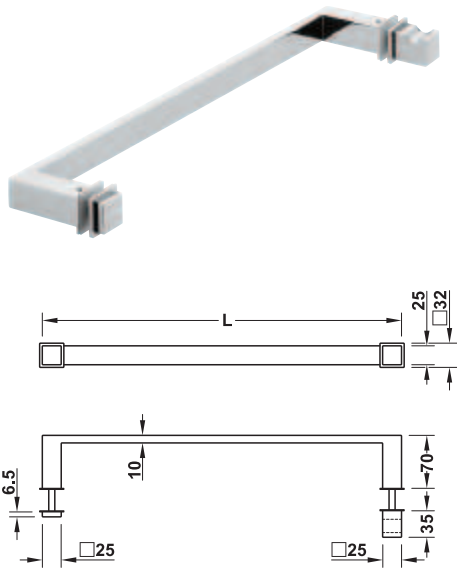
→ Shower door knob



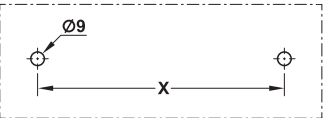
- > Material: Stainless steel
- > For glass thickness: 8–13.1 mm
- > Drill bit Ø : 9 mm
- > Installation: For screw fixing, glass drilling required

Finish/colour	Cat. No.
Polished chrome plated	981.77.006
Graphite black	981.77.014

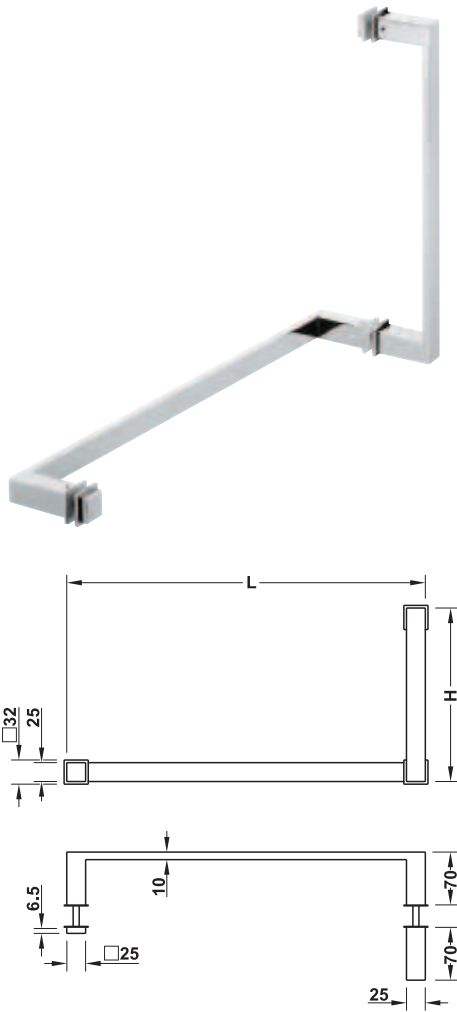
→ Shower door handle



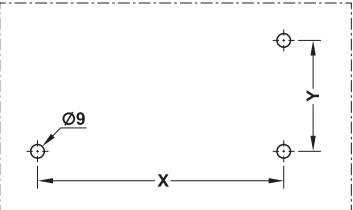
Length L mm	Dim. X mm	Polished	Graphite black
475	450	981.77.000	981.77.008
525	500	981.77.001	981.77.009
575	550	981.77.002	981.77.010



→ Shower door handle with towel rail



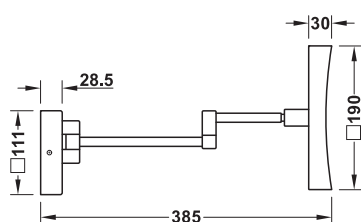
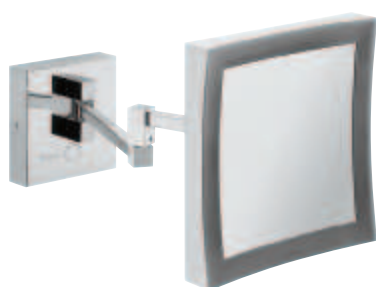
Length L mm	Height H mm	Dim. X mm	Dim. Y mm	Polished	Graphite black
475	225	450	200	981.77.003	981.77.011
525	325	500	300	981.77.004	981.77.012
575	475	550	450	981.77.005	981.77.013





Vanity mirror, illuminated

With 5x magnification



Technical data

Nominal voltage	100–240 V, 50–60 Hz
Mains connection	Direct cabling
Light colour	Warm white 2700 K or daylight white 4000 K, can be selected via touch switch
Wattage	5 W
Luminous flux	60 Lumen
Degree of protection	IP44
Wall bracket dimensions	111 x 111 x 28.5 mm
Mirror dimensions	190 x 190 x 30 mm
Mirror surface dimensions	144 x 144 mm
Max. extension length	385 mm

- > Material: Brass
- > Version: Rotating and swivelling mirror with 5x magnification, with double pivot arm and ball joint at rear of mirror

Supplied with

1 vanity mirror
Fixing material

Finish/colour	Cat. No.
Polished chrome plated	983.27.002
Graphite black	983.27.003

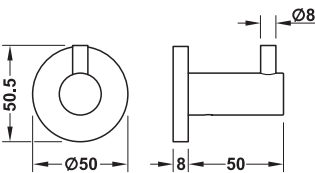


9

Round

> Material	Brass
> Finish	Polished chrome plated or graphite black
> Installation	For screw fixing

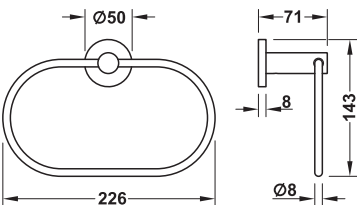
→ **Towel hook**



Supplied with
 1 towel hook
 Fixing material

Finish/colour	Cat. No.
Polished chrome plated	980.60.772
Graphite black	980.60.773

→ **Towel rail**

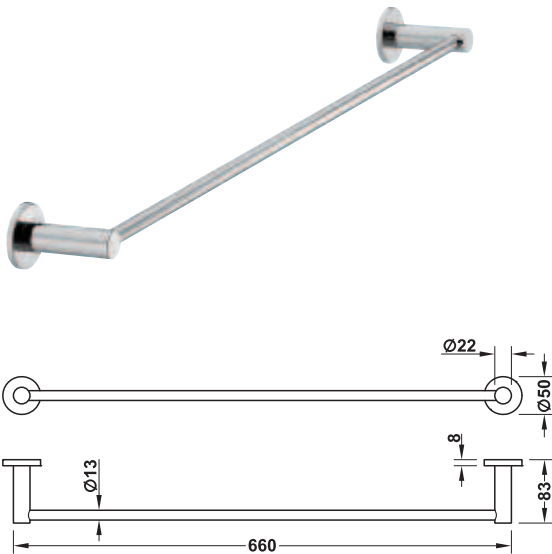


Supplied with
 1 towel rail
 Fixing material

Finish/colour	Cat. No.
Polished chrome plated	980.60.802
Graphite black	980.60.803

DGH-B-INT 2019, HDE-en, 12/18; Dimensional data not binding. We reserve the right to alter specifications without notice.

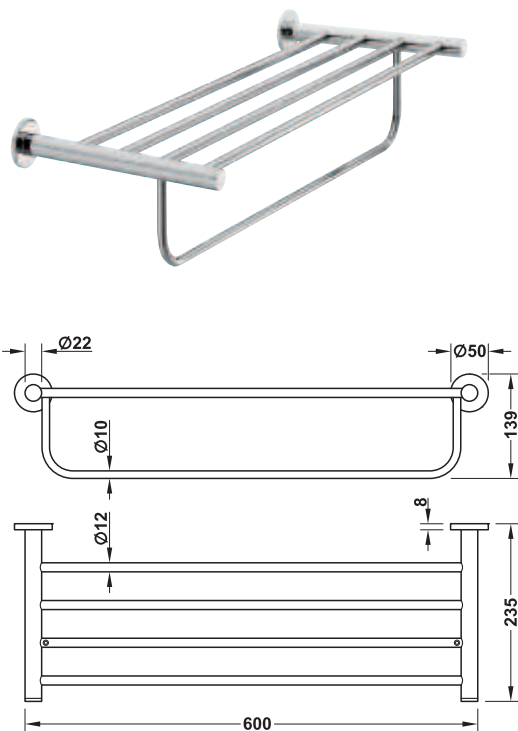
→ Towel rail



Supplied with
1 towel rail
Fixing material

Finish/colour	Cat. No.
Polished chrome plated	980.60.842
Graphite black	980.60.843

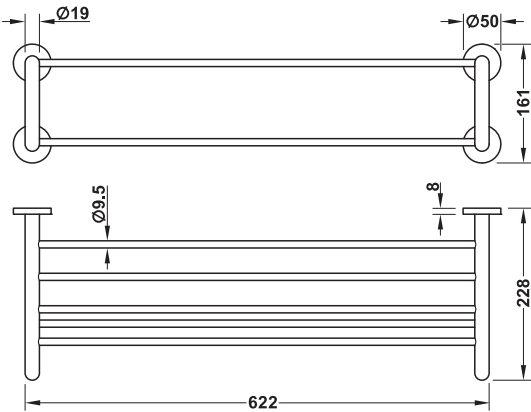
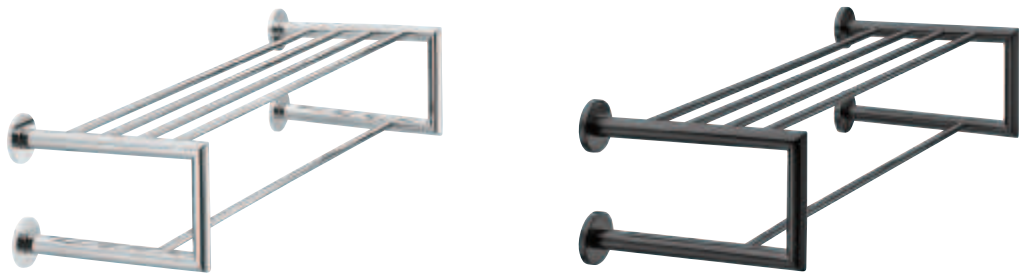
→ Towel shelf with towel rail



Supplied with
1 towel shelf with towel rail
Fixing material

Finish/colour	Cat. No.
Polished chrome plated	980.60.872
Graphite black	980.60.873

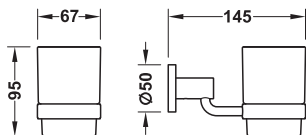
→ Towel shelf with towel rail



Supplied with
1 towel shelf with towel rail
Fixing material

Finish/colour	Cat. No.
Polished chrome plated	980.60.852
Graphite black	980.60.853

→ Glass holder, with satin frosted tumbler



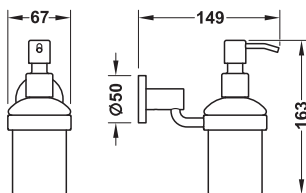
> Capacity: 200 ml

Supplied with
1 glass holder with satin frosted tumbler
Fixing material

Finish/colour	Cat. No.
Polished chrome plated	980.60.782
Graphite black	980.60.783

Order reference
Replacement tumbler available on request.

→ Soap dispenser, with satin frosted glass



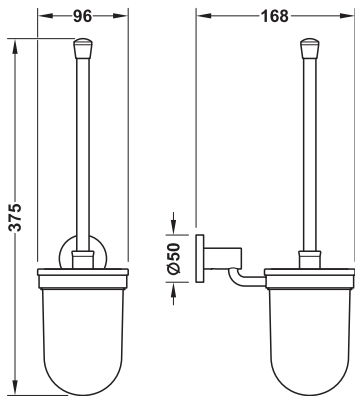
> Capacity: 300 ml

Supplied with
1 soap dispenser with satin frosted glass
Fixing material

Finish/colour	Cat. No.
Polished chrome plated	980.60.792
Graphite black	980.60.793

Order reference
Replacement glass and pump available on request.

→ WC brush set, with satin frosted glass



> Version: Brush head, black, replaceable

Supplied with
1 WC brush set with satin frosted glass and brush
Fixing material

Finish/colour	Cat. No.
Polished chrome plated	980.60.812
Graphite black	980.60.813

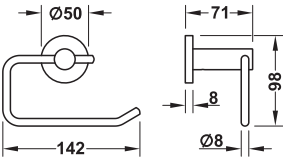
Brush head for WC brush set



> Material: Plastic
> Installation: With screw thread

Finish/colour	Cat. No.
Black	980.60.943

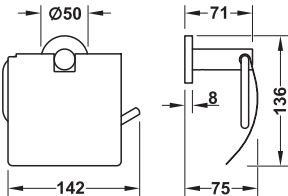
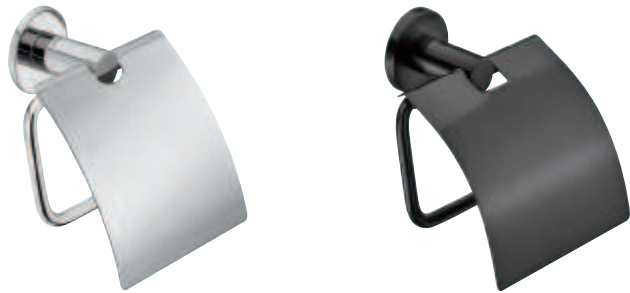
→ Toilet roll holder



Supplied with
1 toilet roll holder
Fixing material

Finish/colour	Cat. No.
Polished chrome plated	980.60.822
Graphite black	980.60.823

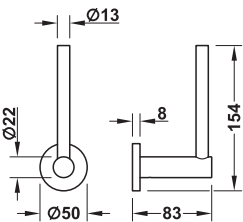
→ Toilet roll holder, with hood



Supplied with
1 toilet roll holder, with hood
Fixing material

Finish/colour	Cat. No.
Polished chrome plated	980.60.832
Graphite black	980.60.833

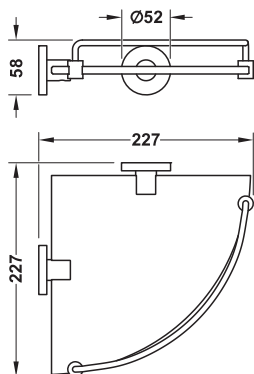
→ Toilet roll holder



Supplied with
1 toilet roll holder
Fixing material

Finish/colour	Cat. No.
Polished chrome plated	980.60.882
Graphite black	980.60.883

→ Corner shelf, with clear glass

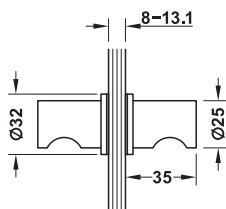


- > Material: Brass, glass clear
- > Glass thickness: 8 mm

Supplied with
1 corner shelf, with clear glass
Fixing material

Finish/colour	Cat. No.
Polished chrome plated	980.60.862
Graphite black	980.60.863

→ Shower door knob

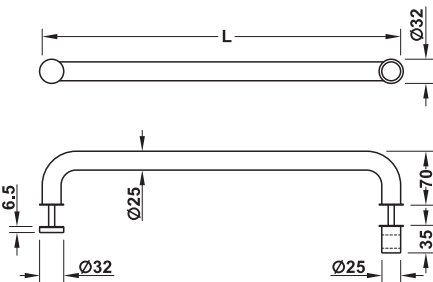


- > Material: Stainless steel
- > For glass thickness: 8–13.1 mm
- > Drill hole Ø: 9 mm
- > Installation: For screw fixing, glass drilling required

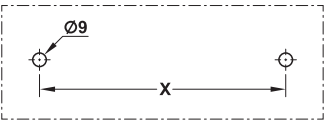
Supplied with
1 shower door knob
Fixing material

Finish/colour	Cat. No.
Polished chrome plated	981.52.109
Graphite black	981.52.110

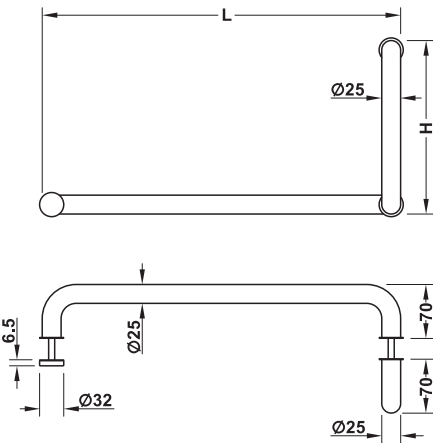
→ Shower door handle



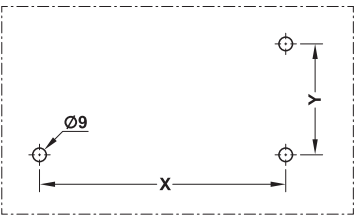
Length L mm	Dim. X mm	Polished	Graphite black
475	450	981.52.103	981.52.113
525	500	981.52.104	981.52.114
575	550	981.52.105	981.52.115



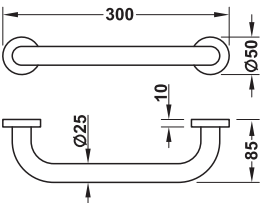
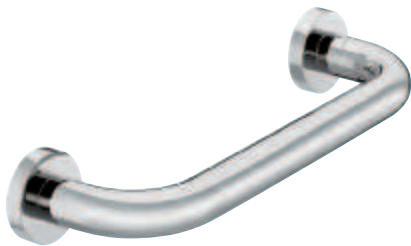
→ Shower door handle with towel rail



Length L mm	Height H mm	Dim. X mm	Dim. Y mm	Polished	Graphite black
475	225	450	200	981.52.106	981.52.116
525	325	500	300	981.52.107	981.52.117
575	475	550	450	981.52.108	981.52.118



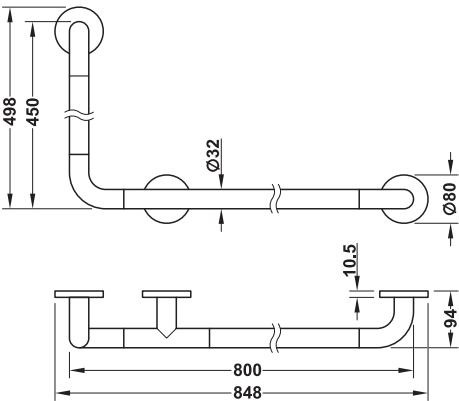
Handle, for bathtub area



- > Material: Brass
- > Load bearing capacity: 150 kg
- > Installation: For screw fixing

Finish/colour	Cat. No.
Polished chrome plated	980.60.902
Graphite black	980.60.903

Handle

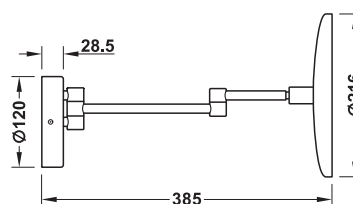


- > Material: Brass
- > Load bearing capacity: 150 kg
- > Installation: For screw fixing

Finish/colour	Cat. No.
Polished chrome plated	980.60.912
Graphite black	980.60.913

Vanity mirror, illuminated

With 5x magnification



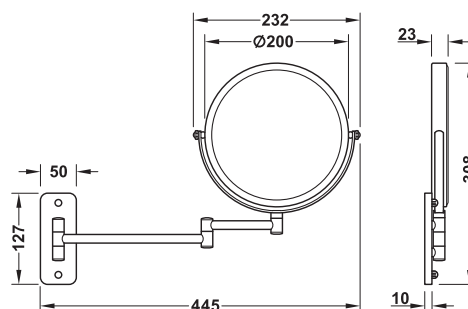
Technical data	
Nominal voltage	100-220 V, 50-60 Hz
Mains connection	Direct cabling
Light colour	Warm white 2700 K or daylight white 4000 K, can be selected via touch switch
Wattage	5 W
Luminous flux	60 Lumen
Energy efficiency class	A
Wall bracket dimensions	120 x 28.5 mm
Mirror surface Ø	178 mm
Max. extension length	386 mm

- > Material: Brass
- > Version: Rotating and swivelling mirror with 5x magnification, with double pivot arm and ball joint at rear of mirror

Finish/colour	Cat. No.
Polished chrome plated	983.27.012
Graphite black	983.27.013

Vanity mirror

With 3x magnification

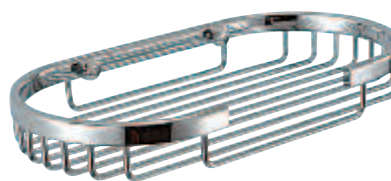
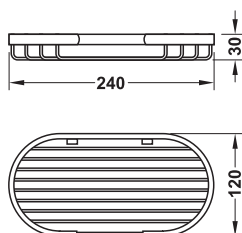


- > Material: Stainless steel/brass
- > Version: Rotating and swivelling, 2 mirrors: 3x magnification and plane mirror, with double pivot arm

Finish/colour	Cat. No.
Polished chrome plated	980.60.922
Graphite black	980.60.923



Soap basket

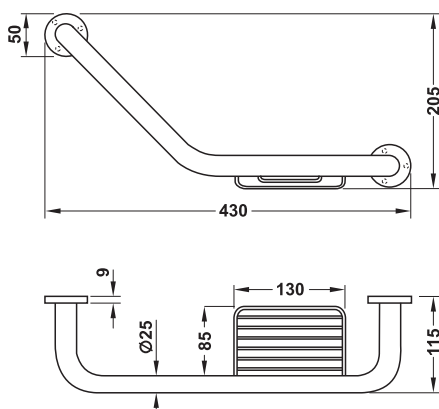


- > Area of application: Shower, bathtub and wash basin area
- > Material: Brass
- > Finish: Polished chrome plated
- > Version: With open front
- > Installation: For screw fixing

Supplied with
1 soap basket
Fixing material

	Cat. No.
Soap basket	980.64.202

Handle With soap basket



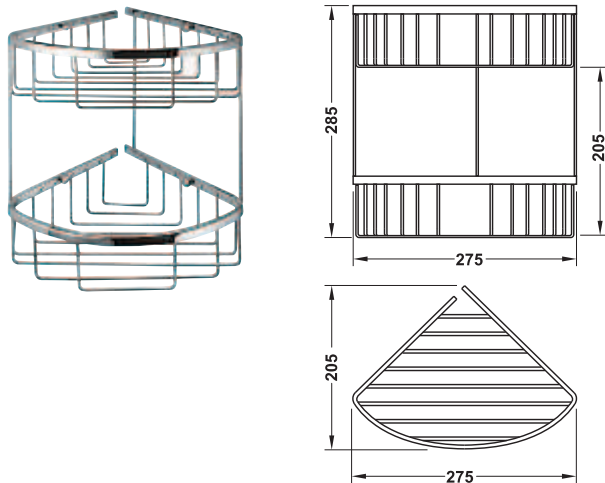
- > Area of application: Shower, bathtub area
- > Material: Brass
- > Finish: Polished chrome plated
- > Installation: For screw fixing

Supplied with
1 handle
Fixing material

	Cat. No.
Handle	980.64.422

Corner wire basket

2 tiers

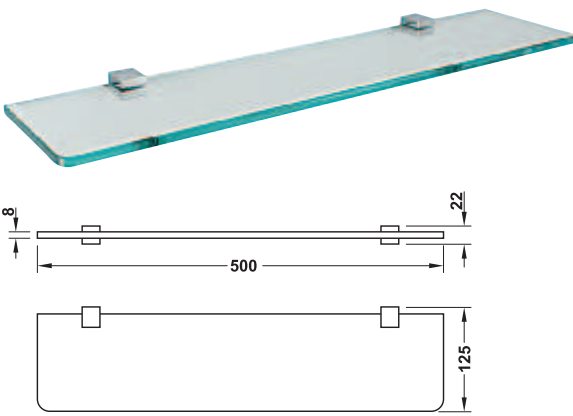


- > Material: Brass
- > Finish: Polished chrome plated
- > Installation: For screw fixing

Supplied with
1 corner wire basket
Fixing material

	Cat. No.
Corner wire basket	980.64.252

Glass shelf with glass panel



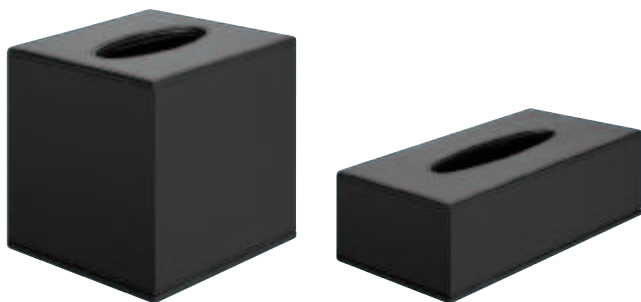
- > Material: Float glass/brass
- > Finish: Polished chrome plated

Supplied with
1 glass shelf with glass panel
Fixing material

	Cat. No.
Glass shelf	980.60.212



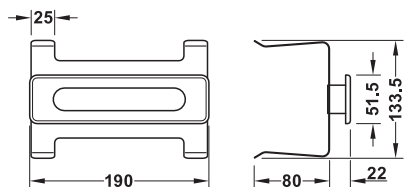
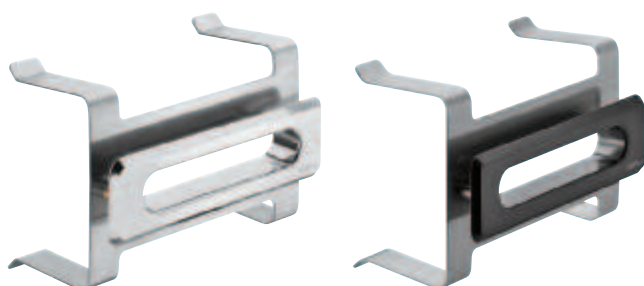
Cosmetic tissue dispenser, can be freely positioned



- > Material: MDF with artificial leather coating
- > Finish/colour: Black

Dim. (W x D x H) mm	Cat. No.
140 x 140 x 140	983.25.003
253 x 140 x 60	983.25.013

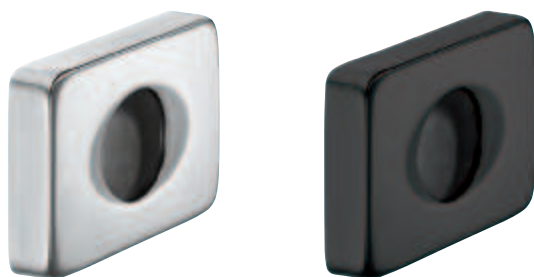
Cosmetic tissue dispenser, for installation in wash basins



- > Material: Steel, ABS plastic dispenser opening
- > For table top thickness: 17 mm
- > Installation: For screw fixing

Finish/colour	Cat. No.
Dispenser opening, chrome plated	983.24.002
Dispenser opening, graphite black	983.24.003

Hygiene box



- > Material: Stainless steel
- > Installation: For screw fixing

Dim. (W x D x H) mm	Finish/colour	Cat. No.
139 x 26 x 99	Polished	980.60.931
	Graphite black	980.60.933

Hair dryer



Technical data

Nominal voltage	220–240 V, 50–60 Hz
Nominal power	1500 W
Mains connection	With Schuko safety plug or fixed wiring with wire network
Cable length	45 cm to 2.5 m
Dimensions	193 x 183 x 93 mm
Weight	579 g

- > Version: With 2 speed settings and safety cut-out, temperature can be regulated, spiral cable with Schuko safety plug, with wall bracket
- > Material: Housing: Plastic
- > Installation: Wall bracket for screw fixing

Finish/colour

Black

Cat. No.

983.25.023

Order reference

Mains leads with different plug type available on request.



Technical data

Nominal voltage	220–240 V, 50–60 Hz
Nominal power	1875 W
Mains connection	With Schuko safety plug
Cable length	75 cm to 3.5 m
Dimensions	262 x 229 x 91 mm
Weight	553 g

- > Version: With 2 speed settings, safety cut-out, temperature can be regulated, with cold air function, spiral cable with Schuko safety plug, power and safety switch on handle
- > Material: Housing: Plastic

Finish/colour

Black

Cat. No.

983.25.033

Order reference

Mains leads with different plug type available on request.



Bathroom mirror

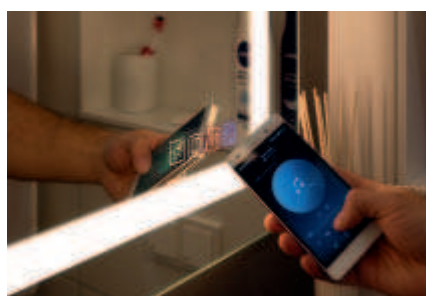


Front lighting warm white

- > Make-up lighting, mood lighting, demister to prevent the mirror from steaming up and sound system in one product
- > Pre-configured mirror unit is easy to install
- > Flexibility is provided by vertical or horizontal mounting
- > Easy to clean thanks to integrated touch switch on mirror surface



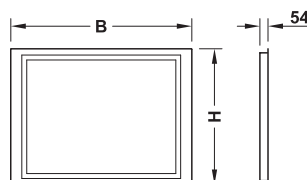
Switching on/colour changing front lighting



Sound activation



Switching on demister



Note

The mirror is equipped with built-in LED lights that can not be replaced.

- > Version: EU version
- > Material: Rear: Wood, LED profile: Aluminium
- > Installation: For screw fixing

Technical data

Front lighting (room and make-up lighting)	Colour temperature: Warm white 2700 K / cool white 4000 K Colour rendering index: >90 Memory function for previously selected mirror colour
Background lighting (mood lighting)	Colour temperature: Warm white 2700 K Colour rendering index: >90
Nominal voltage	12 V DC
Input voltage	100–240 V; 50–60 Hz
Mains connection	Fixed wiring
Designer touch switch	Stand-by: Blue Operation: Warm white
Demister	Stand-by after 45 min.
Sound system	Bluetooth® sound transducer, password: 0000
Degree of protection	IP44
Energy efficiency class of LED lights	A

Supplied with

1 multifunctional bathroom mirror
1 drilling template
Connection lead with terminal clamp
Wall plugs

12 V

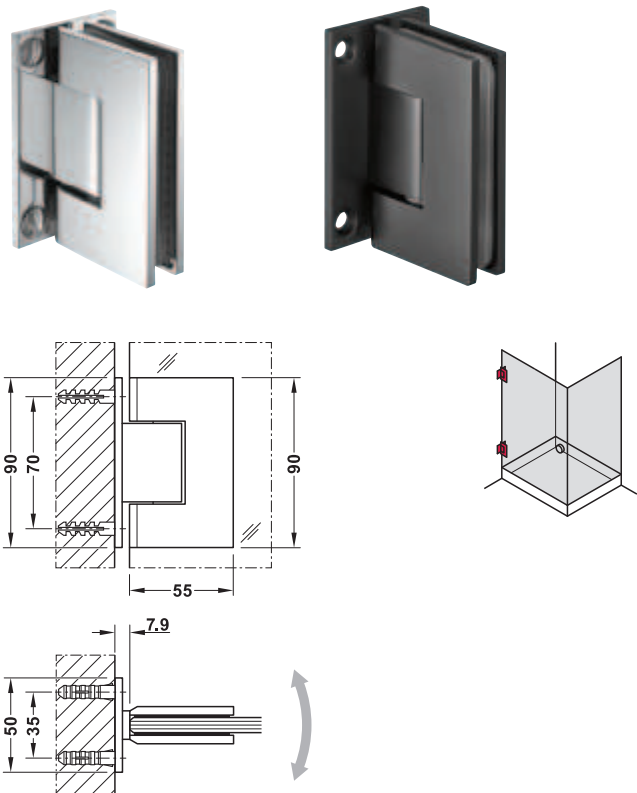


Dim. (W x H) mm	Luminous flux lm	Wattage W	Cat. No.
900 x 600	1080	95.0	983.19.011
900 x 900	1300	102.0	983.19.021
1200 x 900	1560	111.0	983.19.031



9

Shower door hinge, straight



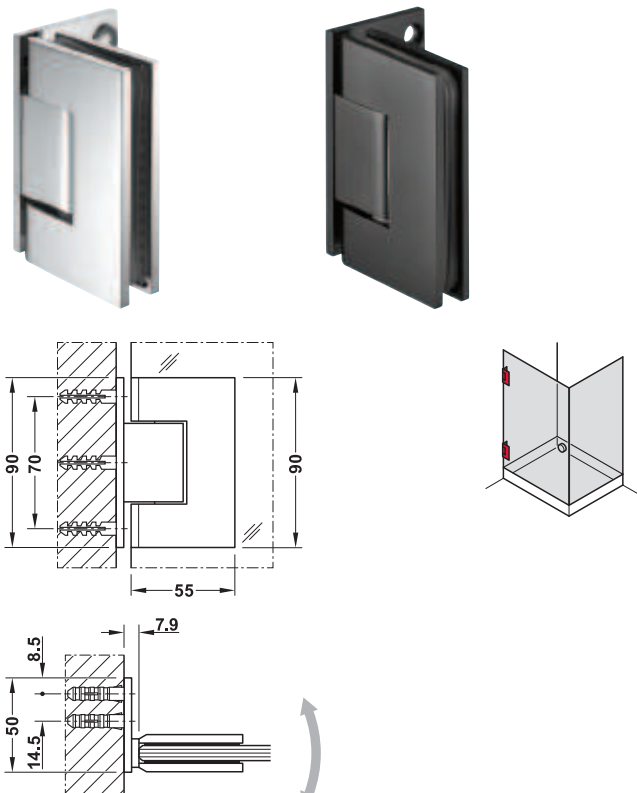
- > Area of application: For wall-glass connection
- > For glass thickness: 8–12 mm
- > Material: Brass
- > Version: With interlocking function on both sides in open position
- > Mounting: For DIN left and DIN right hand use
- > Load bearing capacity: Max. 45 kg (when using 2 shower door hinges)
- > Door height: ≤2,400 mm
- > Door width: ≤800 mm
- > Opening angle: 90°, on both sides
- > Locking function: From an opening angle of approx. 85°
- > Installation: For screw fixing, glass cut-out required

Note
Dimensions for glass preparation see Häfele online shop
www.hafele.com

Finish/colour	Cat. No.
Polished chrome plated	981.51.004
Graphite black	981.51.003

Order reference
Glass door seal not supplied. Please order separately.

Shower door hinge, straight



- > Area of application: For wall-glass connection
- > For glass thickness: 8–12 mm
- > Material: Brass
- > Version: With interlocking function on both sides in open position
- > Mounting: For DIN left and DIN right hand use
- > Load bearing capacity: Max. 45 kg (when using 2 shower door hinges)
- > Door height: ≤2,400 mm
- > Door width: ≤800 mm
- > Opening angle: 90°, on both sides
- > Locking function: From an opening angle of approx. 85°
- > Installation: For screw fixing, glass cut-out required

Note
Dimensions for glass preparation see Häfele online shop
www.hafele.com

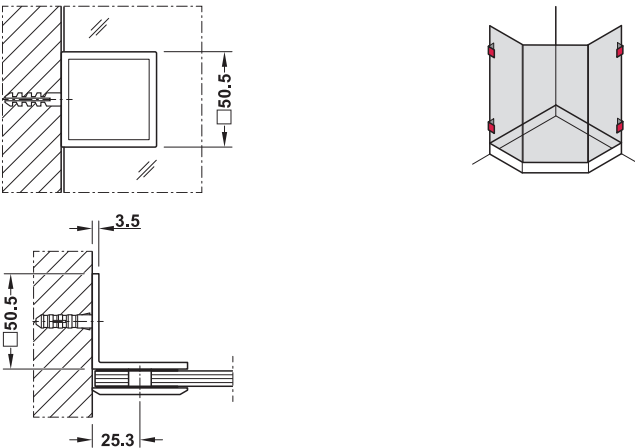
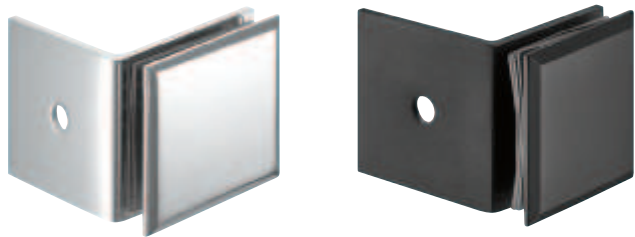
Finish/colour	Cat. No.
Polished chrome plated	981.02.081
Graphite black	981.02.083

Order reference
Glass door seal not supplied. Please order separately.

Glass door seal	► AH 9.36
Stabilising rod 90°, for shower walls	► AH 9.35

Glass door seal	► AH 9.36
Stabilising rod 90°, for shower walls	► AH 9.35

Glass clamp, with bracket

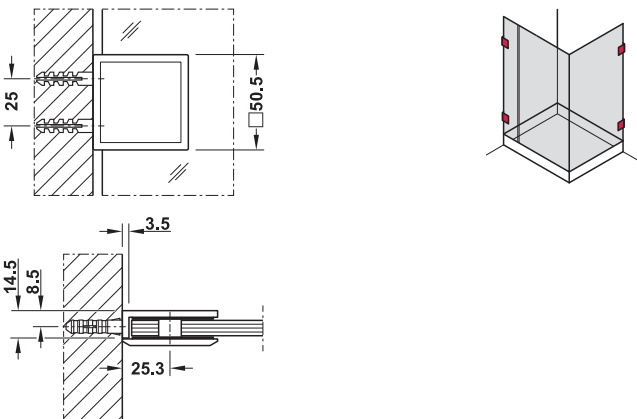
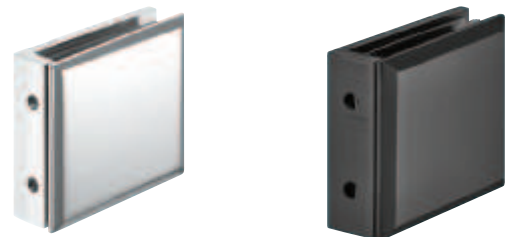


- > Area of application: For wall-glass connection
- > For glass thickness: 8–12 mm
- > Material: Brass
- > Angle: 90°
- > Mounting: For left and right hand use
- > Installation: For screw fixing, glass cut-out required

Note
Dimensions for glass preparation see Häfele online shop
www.hafele.com

Finish/colour	Cat. No.
Polished chrome plated	981.02.254
Graphite black	981.02.253

Glass clamp, straight



- > Area of application: For wall-glass connection, concealed wall mounting
- > For glass thickness: 8–12 mm
- > Material: Brass
- > Angle: 90°
- > Mounting: For left and right hand use
- > Installation: For screw fixing, glass cut-out required

Note
Dimensions for glass preparation see Häfele online shop
www.hafele.com

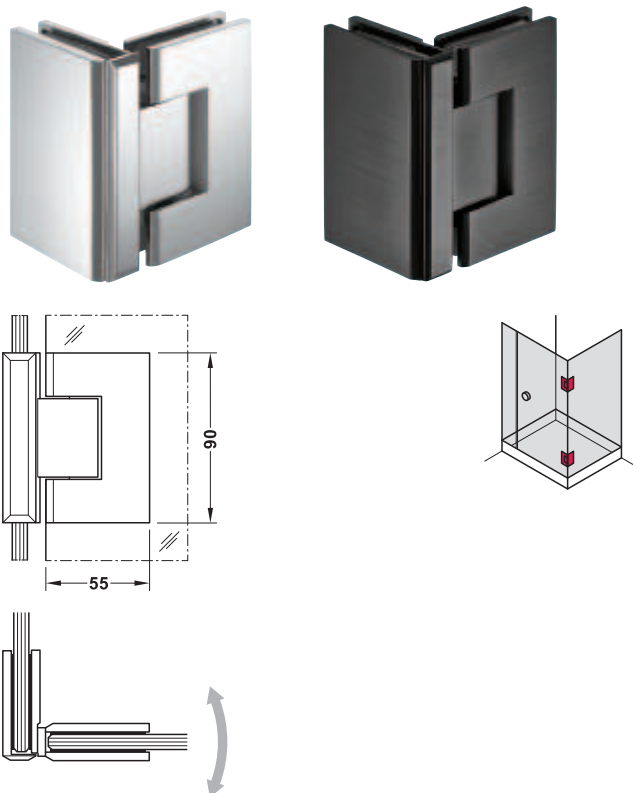
Finish/colour	Cat. No.
Polished chrome plated	981.02.244
Graphite black	981.02.243

Stabilising rod 45°, for shower walls ▶ AH 9.35

Stabilising rod 90°, for shower walls ▶ AH 9.35

DGH-B-INT 2019, HDE-en, 12/18; Dimensional data not binding. We reserve the right to alter specifications without notice.

Shower door hinge, 90°



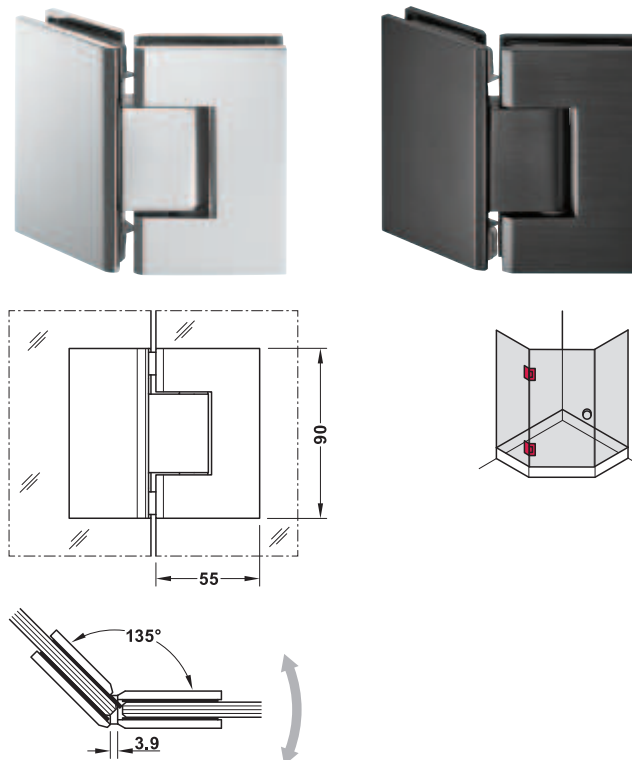
- > Area of application: For glass-glass connection, for 90° glass front
- > For glass thickness: 8–12 mm
- > Material: Brass
- > Version: With interlocking function on both sides in open position
- > Mounting: For DIN left and DIN right hand use
- > Load bearing capacity: Max. 45 kg (when using 2 shower door hinges)
- > Door height: ≤2,400 mm
- > Door width: ≤800 mm
- > Opening angle: 90°, on both sides
- > Locking function: From an opening angle of approx. 85°
- > Installation: For screw fixing, glass cut-out required

Note

Dimensions for glass preparation see Häfele online shop www.hafele.com

Finish/colour	Cat. No.
Polished chrome plated	981.51.014
Graphite black	981.51.013

Shower door hinge, 135°



- > Area of application: For glass-glass connection, for 135° glass front
- > For glass thickness: 8–12 mm
- > Material: Brass
- > Version: With interlocking function on both sides in open position
- > Mounting: For DIN left and DIN right hand use
- > Load bearing capacity: Max. 45 kg (when using 2 shower door hinges)
- > Door height: ≤2,400 mm
- > Door width: ≤800 mm
- > Opening angle: 90°, on both sides
- > Locking function: From an opening angle of approx. 85°
- > Installation: For screw fixing, glass cut-out required

Note

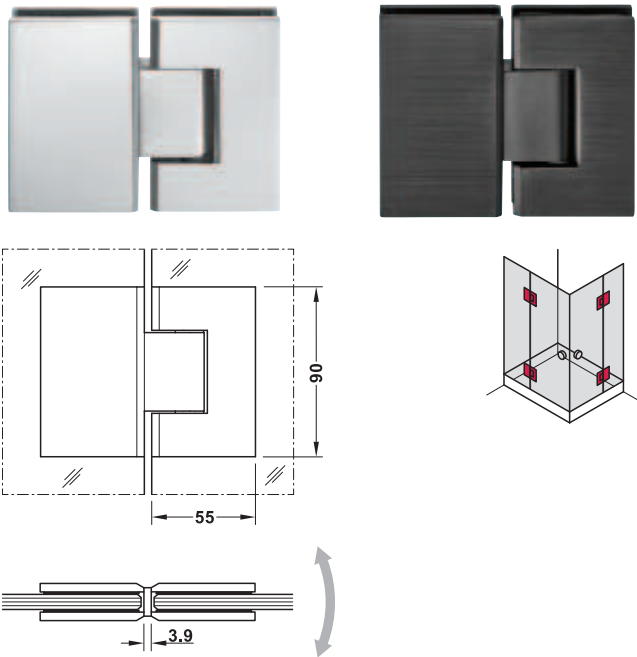
Dimensions for glass preparation see Häfele online shop www.hafele.com

Finish/colour	Cat. No.
Polished chrome plated	981.51.021
Graphite black	981.51.023

Glass door seal	► AH 9.36
Stabilising rod 90°, for shower walls	► AH 9.35

Glass door seal	► AH 9.36
Stabilising rod 45°, for shower walls	► AH 9.35

Shower door hinge, 180°

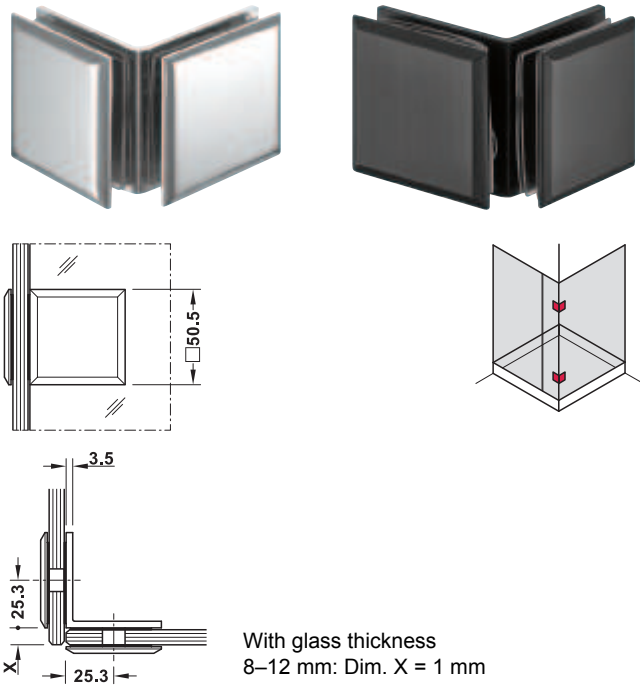


- > Area of application: For glass-glass connection, for 180° glass front
- > For glass thickness: 8–12 mm
- > Material: Brass
- > Version: With interlocking function on both sides in open position
- > Mounting: For DIN left and DIN right hand use
- > Load bearing capacity: Max. 45 kg (when using 2 shower door hinges)
- > Door height: ≤2,400 mm
- > Door width: ≤800 mm
- > Opening angle: 90°, on both sides
- > Locking function: From an opening angle of approx. 85°
- > Installation: For screw fixing, glass cut-out required

Note
Dimensions for glass preparation see Häfele online shop
www.hafele.com

Finish/colour	Cat. No.
Polished chrome plated	981.51.031
Graphite black	981.51.033

Glass clamp, 90°



- > Area of application: For glass-glass connection, for 90° glass front
- > For glass thickness: 8–12 mm
- > Material: Brass
- > Angle: 90°
- > Mounting: For left and right hand use
- > Installation: For screw fixing, glass cut-out required

Note
Dimensions for glass preparation see Häfele online shop
www.hafele.com

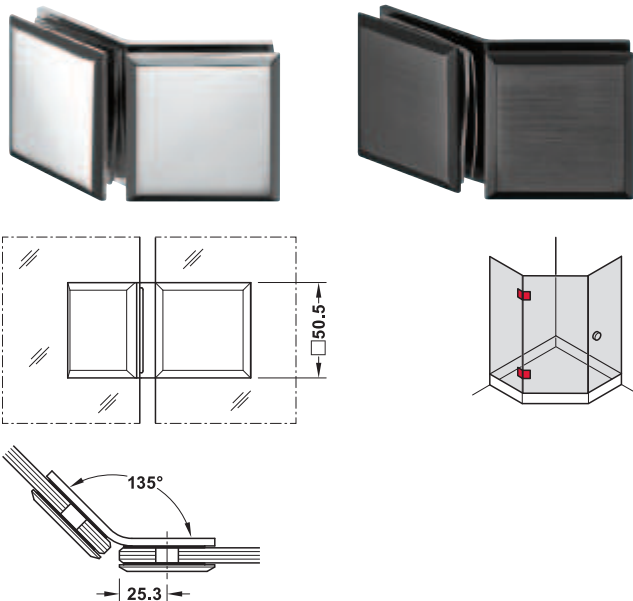
Finish/colour	Cat. No.
Polished chrome plated	981.02.264
Graphite black	981.02.263

Glass door seal	► AH 9.36
Stabilising rod 45°, for shower walls	► AH 9.35

Stabilising rod 90°, for shower walls	► AH 9.35
---------------------------------------	-----------

DGH-B-INT 2019, HDE-en, 12/18; Dimensional data not binding. We reserve the right to alter specifications without notice.

Glass clamp, 135°

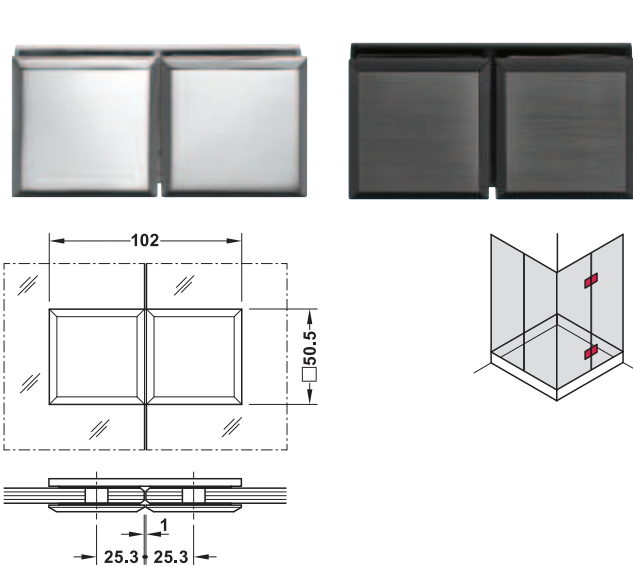


- > Area of application: For glass-glass connection, for 135° glass front
- > For glass thickness: 8–12 mm
- > Material: Brass
- > Angle: 135°
- > Mounting: For left and right hand use
- > Installation: For screw fixing, glass cut-out required

Note
Dimensions for glass preparation see Häfele online shop www.hafele.com

Finish/colour	Cat. No.
Polished chrome plated	981.02.091
PVD coated, graphite black	981.02.093

Glass clamp, 180°

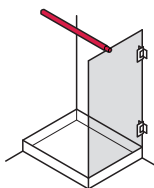


- > Area of application: For glass-glass connection, for 180° glass front
- > For glass thickness: 8–12 mm
- > Material: Brass
- > Angle: 180°
- > Mounting: For left and right hand use
- > Installation: For screw fixing, glass cut-out required

Note
Dimensions for glass preparation see Häfele online shop www.hafele.com

Finish/colour	Cat. No.
Polished chrome plated	981.02.274
PVD coated, graphite black	981.02.273

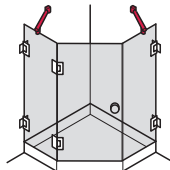
Stabilising rod 90°,
for shower walls



- > For glass thickness: 8–12 mm
- > Material: Brass
- > Length: 1,050 mm
- > Diameter: Rod: 20 mm, end cap: 28 mm
- > Installation: For screw fixing to the wall, glass is held by fixing clamps

Finish/colour	Cat. No.
Polished chrome plated	981.02.061
PVD coated, graphite black	981.02.063

Stabilising rod 45°,
for shower walls

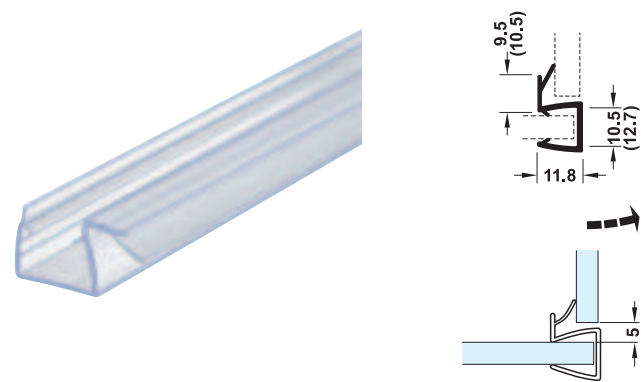


- > For glass thickness: 8–12 mm
- > Material: Brass
- > Length: 400 mm
- > Diameter: Rod: 20 mm, end cap: 28 mm
- > Installation: For screw fixing to the wall, glass is held by fixing clamps

Finish/colour	Cat. No.
Polished chrome plated	981.02.071
PVD coated, graphite black	981.02.073

DGH-B-INT 2019, HDE-en, 12/18; Dimensional data not binding. We reserve the right to alter specifications without notice.

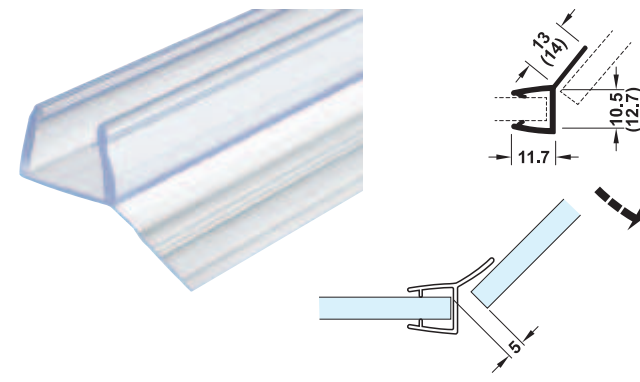
Glass door seal 90°



- > Area of application: For creating a seal between shower doors and adjacent glass elements, for 90° glass fronts
- > Material: PVC
- > Finish/colour: Transparent
- > Length: 2.5 m, can be shortened as required
- > Installation: For sliding onto glass edge

For glass thickness mm	Cat. No.
8–10	950.50.002
10–12	950.50.003

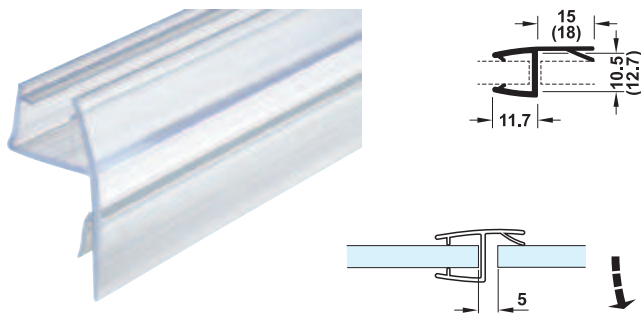
Glass door seal 135°



- > Area of application: For creating a seal between shower doors and adjacent glass elements, can alternatively be used as floor seal, for 135° glass fronts
- > Material: PVC
- > Finish/colour: Transparent
- > Length: 2.5 m, can be shortened as required
- > Installation: For sliding onto glass edge

For glass thickness mm	Cat. No.
8–10	950.50.006
10–12	950.50.007

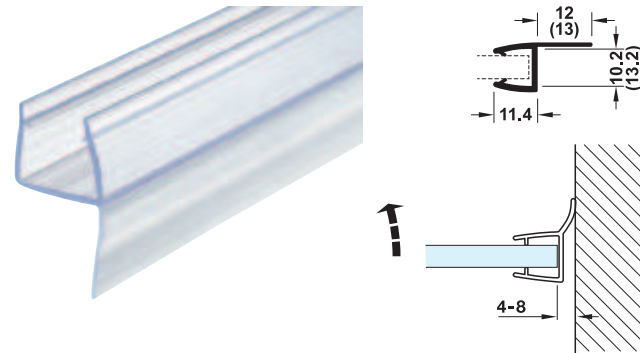
Glass door seal 180°



- > Area of application: For creating a seal between shower doors and adjacent glass elements, for 180° glass fronts
- > Material: PVC
- > Finish/colour: Transparent
- > Length: 2.5 m, can be shortened as required
- > Installation: For sliding onto glass edge

For glass thickness mm	Cat. No.
8–10	950.50.000
10–12	950.50.001

Glass door seal

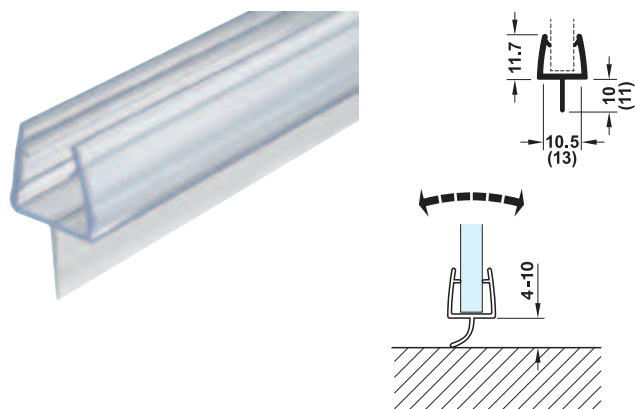


- > Area of application: For creating a seal between shower doors and adjacent wall or floor areas
- > Material: PVC
- > Finish/colour: Transparent
- > Length: 2.5 m, can be shortened as required
- > Installation: For sliding onto glass edge

For glass thickness mm	Cat. No.
8–10	950.50.008
10–12	950.50.009

DGH-B-INT 2019, HDE-en, 12/18; Dimensional data not binding. We reserve the right to alter specifications without notice.

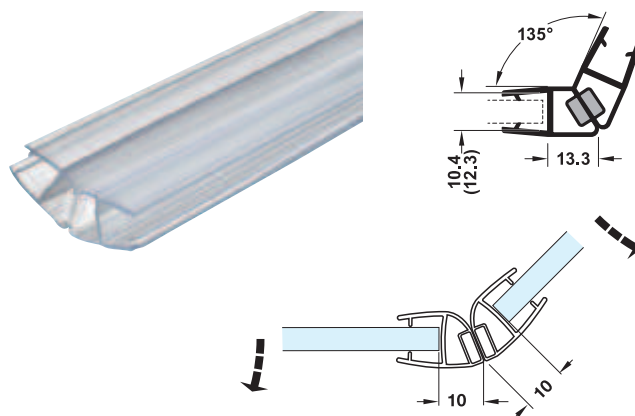
Glass door seal



- > Area of application: For creating a seal between shower doors and adjacent floor areas
- > Material: PVC
- > Finish/colour: Transparent
- > Length: 2.5 m, can be shortened as required
- > Installation: For sliding onto glass edge

For glass thickness mm	Cat. No.
8-10	950.50.012
10-12	950.50.013

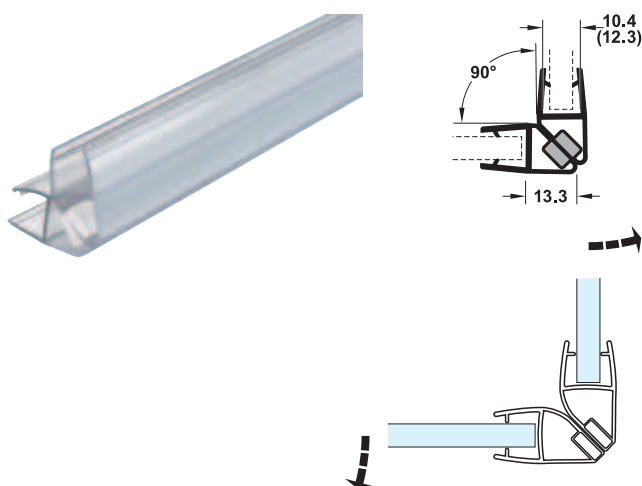
Magnetic glass door seal, 135°



- > Area of application: For creating a seal between 2-leaf shower doors, for 135° glass front, with magnet for holding in closed position
- > Material: PVC
- > Finish/colour: Transparent
- > Length: 2.5 m, can be shortened as required
- > Installation: For sliding onto glass edge

For glass thickness mm	Packing pair	Cat. No.
8-10	1	950.50.036
10-12	1	950.50.037

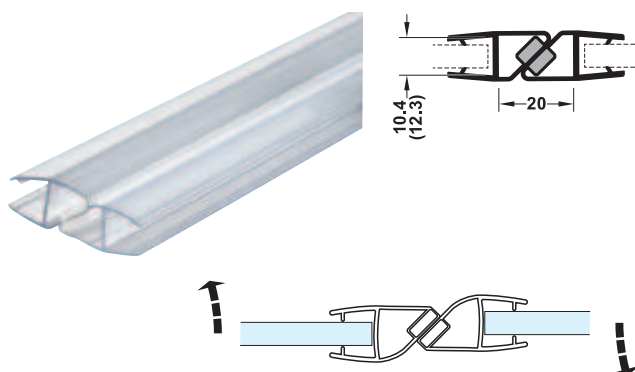
Magnetic glass door seal, 90°



- > Area of application: For creating a seal between 2-leaf shower doors, for 90° glass front, with magnet for holding in closed position
- > Material: PVC
- > Finish/colour: Transparent
- > Length: 2.5 m, can be shortened as required
- > Installation: For sliding onto glass edge

For glass thickness mm	Packing pair	Cat. No.
8-10	1	950.50.034
10-12	1	950.50.035

Magnetic glass door seal, 180°



- > Area of application: For creating a seal between 2-leaf shower doors, for 180° glass front, with magnet for holding in closed position
- > Material: PVC
- > Finish/colour: Transparent
- > Length: 2.5 m, can be shortened as required
- > Installation: For sliding onto glass edge

For glass thickness mm	Packing pair	Cat. No.
8-10	1	950.50.038
10-12	1	950.50.039

Laundry basket

→ Mobile, with twin castors



- > Material: Wire frame: Steel, twin castors: Plastic
- > Finish: Wire frame: Chrome plated
- > Colour: Twin castors: Black

Capacity l	Dim. (W x D x H) mm	Cat. No.
73	400 x 455 x 535	540.01.204

→ Collapsible



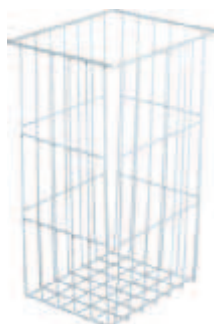
- > Material: Steel
- > Finish/colour: Powder coated, white
- > Version: With feet and 2 suspension eyes

Supplied with

1 laundry basket with fixing material

Dim. (W x D x H) mm	Cat. No.
330 x 255 x 640	540.08.722

→ Stackable



- > Material: Steel
- > Finish/colour: Powder coated, white, RAL 9010
- > Installation: For suspending in mounting rail

Height mm	Dim. (W x D) mm	Dim. mm	Cat. No.
430	230 x 270	195 x 225 (bottom)	540.06.772
320	270 x 300	230 x 260 (bottom)	540.06.718
400	340 x 250	300 x 200 (bottom)	540.06.727
450	340 x 250	300 x 200 (bottom)	540.06.736
420	395 x 480	365 x 460 (bottom)	540.06.745
520	395 x 480	365 x 460 (bottom)	540.06.754
450	400 x 500	365 x 465 (bottom)	540.06.763
430	430 x 270	385 x 225 (bottom)	540.06.781

Mounting rail



- > Area of application: For mounting laundry baskets onto the wall or cabinet
- > Material: Steel
- > Installation: For screw fixing

Dim. (W x D x H) mm	Finish/colour	Cat. No.
225 x 16 x 26	Powder coated, white, RAL 9010	540.06.996

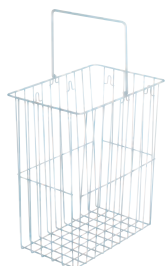
→ Stackable, with slanted edge and folding handle



- > Material: Steel
- > Finish/colour: Powder coated, white
- > Installation: For suspending in mounting rail

Dim. (W x D x H) mm	Height mm	Cat. No.
290 x 270	Front: 370, Rear: 430	540.07.713

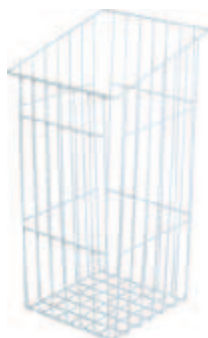
→ Stackable, with folding handle and eyes



- > Material: Steel
- > Colour: White
- > Installation: For screw fixing

Dim. (W x D x H) mm	Cat. No.
320 x 220 x 350	540.07.715

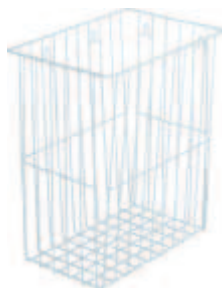
→ Stackable, with slanted edge



- > Material: Steel
- > Finish/colour: Powder coated, white

Dim. (W x D) mm	Height mm	Cat. No.
240 x 240	Front: 400 Rear: 460	540.07.701
240 x 290	Front: 400 Rear: 460	540.07.702
290 x 270	Front: 370 Rear: 430	540.07.703
290 x 240	Front: 400 Rear: 460	540.07.704

→ Stackable, with eyes



- > Material: Steel
- > Installation: For screw fixing

Dim. (W x D x H) mm	White	White aluminium, RAL 9006
320 x 220 x 350	540.07.722	540.07.222
390 x 240 x 650	540.07.723	540.07.223



- > Version: With foot pedal for opening lid
- > Dim. (W x D x H): 155 x 155 x 260 mm
- > Capacity: 3 l

Material	Finish/colour	Cat. No.
Waste bin: Stainless steel, inner bin: Plastic	Waste bin: Polished, inner bin: Black	983.26.001



- > Version: With foot pedal for opening lid
- > Height: 235 mm
- > Diameter: 165 mm
- > Capacity: 3 l

Material	Finish/colour	Cat. No.
Waste bin: Stainless steel, inner bin: Plastic	Waste bin: Polished, inner bin: Black	983.26.011

Hailo Bathroom cosmetic bin, 8 litres



- > Swing lid closes automatically after every use
- > Suitable for aerosol cans and shampoo bottles due the narrow and high shape

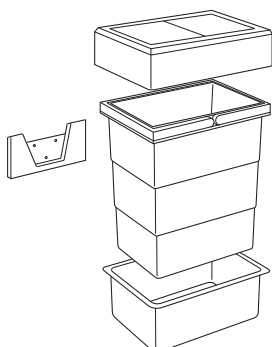


- > Version: The cosmetic bin can be installed in base units with hinged doors, in base units with pull out or wall mounted
- > Material: Plastic
- > For cabinet width: Min. 300 mm
- > Installation height: 340 mm
- > Colour: White
- > Installation: The wall bracket can be screwed to the cabinet front or directly onto the tiled wall

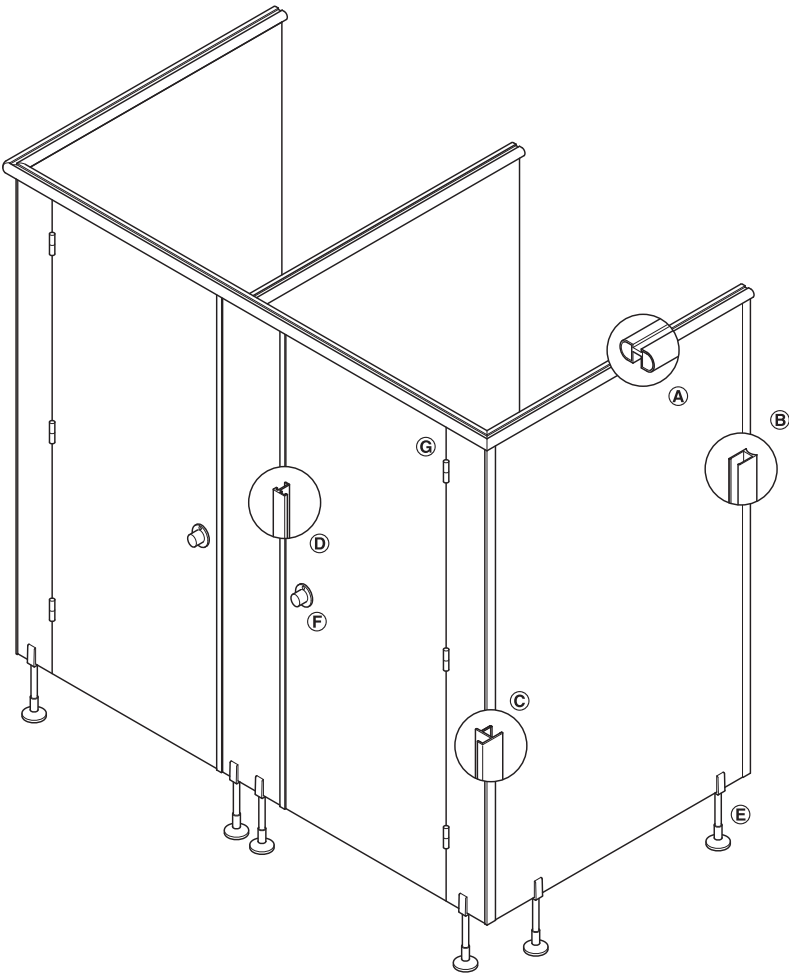
Capacity l	Dim. (W x D x H) mm	Model	Cat. No.
8	228 x 166 x 337	3215-29	502.63.759



9



Partition wall system for sanitary facilities
For 13 mm panel system



System overview

- Ⓐ Headrail
- Ⓑ Wall jointing profile
- Ⓒ Corner jointing profile
- Ⓓ Door stop profile/buffer profile
- Ⓔ Support leg
- Ⓕ Rotary knob with latch
- Ⓖ Light metal butt hinge

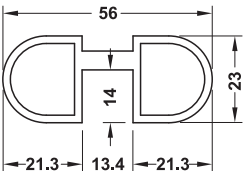
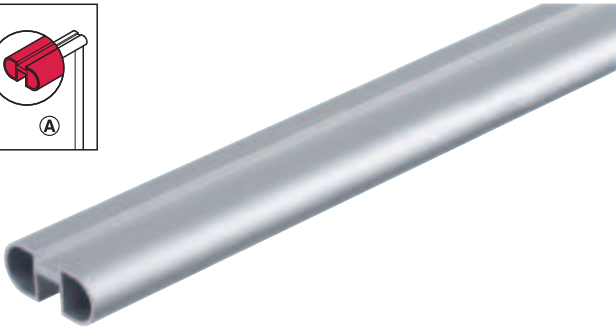
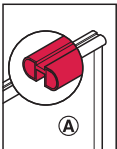
Note

Only to be used for 13 mm thick panels.

Order reference

Please combine the individual components as required.

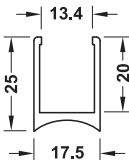
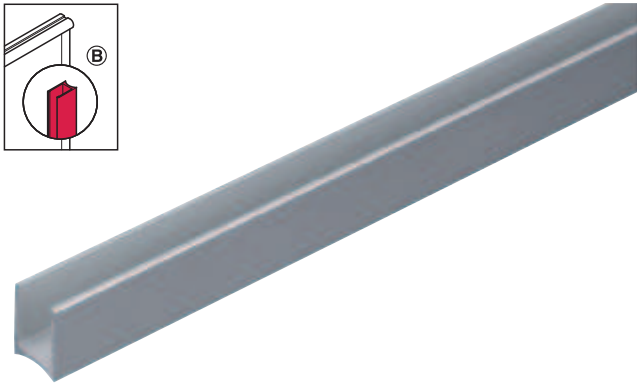
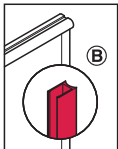
→ Headrail Ⓐ



- > Material: Aluminium EV1
- > For table top thickness: 13 mm
- > Length: 6,000 mm

Finish	Cat. No.
Silver coloured anodized	980.79.756

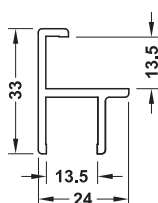
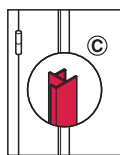
→ Wall jointing profile Ⓑ



- > Material: Aluminium EV1
- > For table top thickness: 13 mm
- > Length: 6,000 mm

Finish	Cat. No.
Silver coloured anodized	980.79.796

→ Corner jointing profile ©



- > Material: Aluminium EV1
- > For table top thickness: 13 mm
- > Length: 6,000 mm

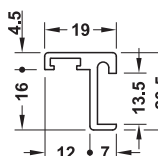
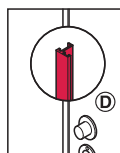
Finish

Silver coloured anodized

Cat. No.

980.79.736

→ Door stop profile ©



- > Material: Aluminium EV1
- > For table top thickness: 13 mm
- > Length: 6,000 mm

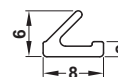
Finish

Silver coloured anodized

Cat. No.

980.79.716

→ Buffer profile ©



- > Area of application: Suitable for door stop profile
- > Length: 10 m

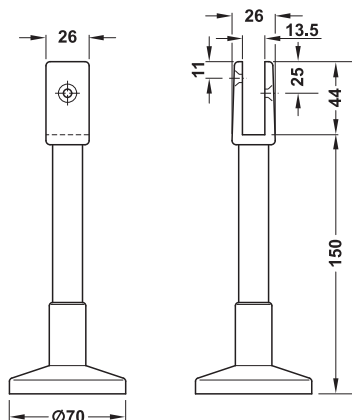
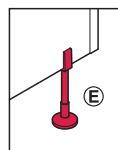
Colour

Grey

Cat. No.

980.79.901

→ Support leg ©



- > Area of application: For supporting partition panels
- > Version: With foot and clip-on face plate, adjustable
- > Material: Aluminium
- > For table top thickness: 13 mm
- > Installation: Floor mounted with screws

Finish

Aluminium coloured

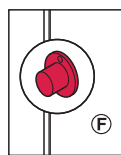
Cat. No.

980.79.401

Order reference

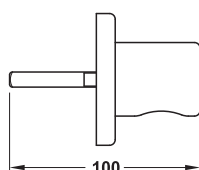
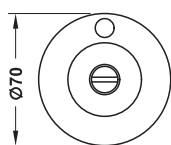
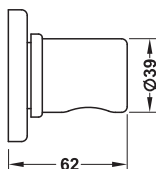
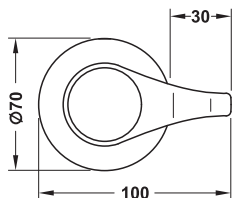
Fixing material supplied.

→ Rotary knob with latch (F)



Rotary knob

Indicator knob

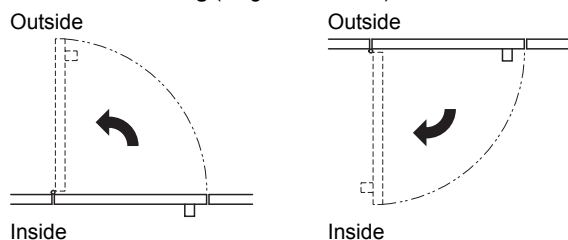


- > Area of application: For locking partition wall door
- > Version: Indicator knob with red/green indicator disc and emergency opening function (slot)
- > Material: Aluminium EV1
- > Finish: Silver coloured anodized
- > For table top thickness: 13 mm

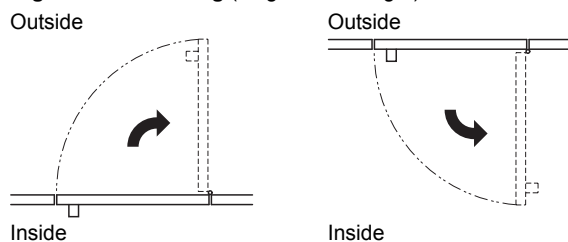
Definition of operating direction

The operating direction of the rotary knob does not necessarily coincide with the DIN direction of the door.
Principle: Facing side = operating side (rotary knob side or cubicle interior)

Left hand mounting (hinges on the left)



Right hand mounting (hinges on the right)

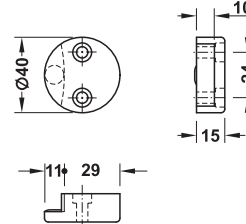


Mounting	Cat. No.
Left	980.79.481
Right	980.79.491

Order reference

Fixing material supplied.

→ Keep for rotary lock with latch



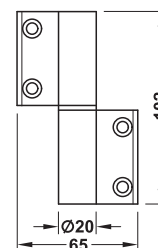
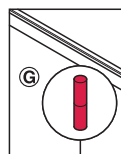
- > Area of application: For flush mounted systems
- > Material: Aluminium EV1
- > For table top thickness: 13 mm
- > Mounting: For DIN left and DIN right hand use

Finish	Cat. No.
Silver coloured anodized	980.79.801

Order reference

Fixing material supplied.

→ Light metal butt hinge (G)



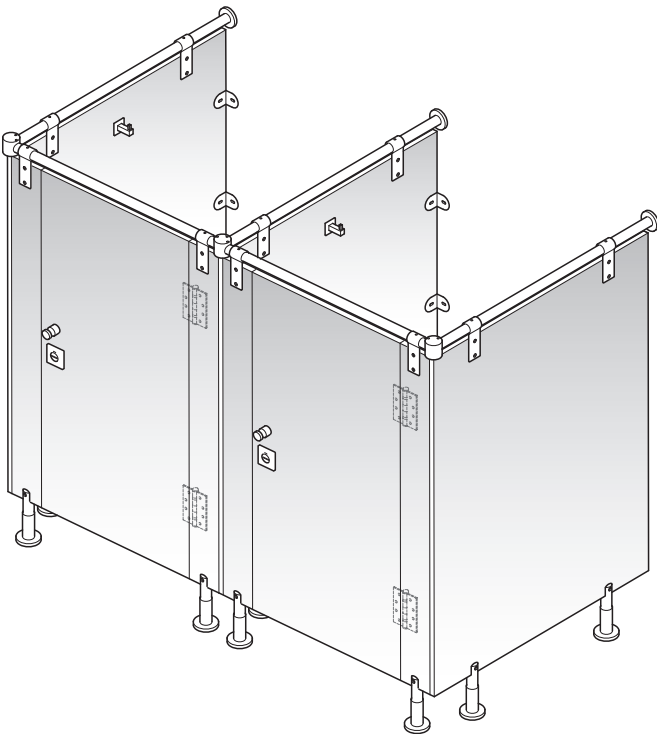
- > Area of application: For flush doors
- > Material: Aluminium EV1
- > Finish: Silver coloured anodized
- > For table top thickness: 13 mm
- > Installation: For direct fixing to door without recess

Version	Mounting	Cat. No.
2-piece	DIN left	980.79.121
	DIN right	980.79.131
2-piece, self-closing	DIN left	980.79.161
	DIN right	980.79.171

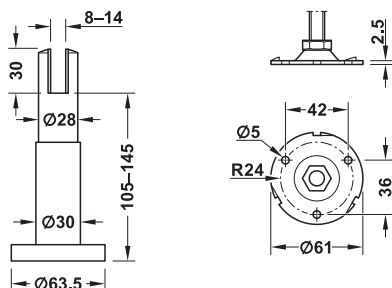
Order reference

Fixing material supplied.

Partition wall system for sanitary facilities
For compact laminate panels



Support leg

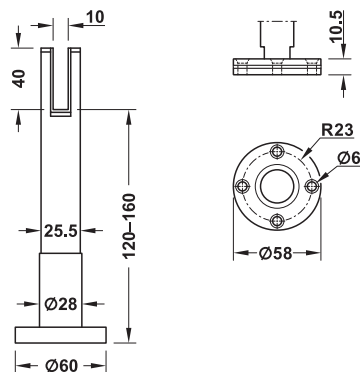


- > Area of application: For supporting partition panels
- > For panel thickness: 8–14 mm
- > Height adjustment: 135–175 mm
- > Installation: Floor mounted, for screw fixing

Supplied with
1 support leg
Fixing material

Material	Finish	Cat. No.
Stainless steel 304	Satin	988.98.110

Support leg

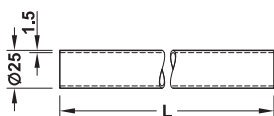
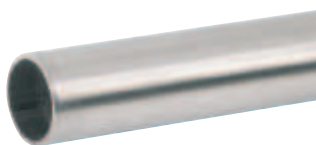


- > Area of application: For supporting partition panels
- > For panel thickness: 10 mm
- > Height adjustment: 162–202 mm
- > Installation: Floor mounted, for screw fixing

Supplied with
1 support leg
Fixing material

Material	Finish	Cat. No.
Stainless steel 304	Satin	988.98.120

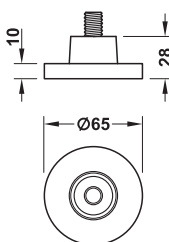
Support tube



> Length: 3,000 mm

Material	Finish	Cat. No.
Stainless steel 304	Satin	988.98.150

Wall connection fitting

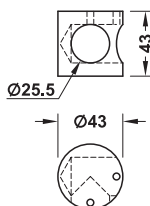


> Area of application: For wall mounting to fix the support tube

Supplied with
1 wall connection fitting
Fixing material

Material	Finish	Cat. No.
Stainless steel 304	Satin	988.98.000

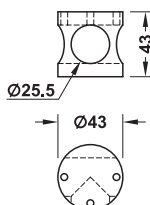
Corner connection fitting 90°



> Area of application: For 90° connection of two support tubes

Material	Finish	Cat. No.
Stainless steel 304	Satin	988.98.060

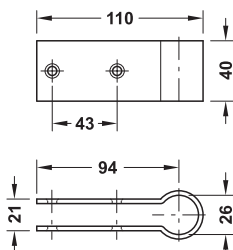
T-Connection fitting



> Area of application: For T-connection of three support tubes

Material	Finish	Cat. No.
Stainless steel 304	Satin	988.98.070

Panel connection fitting

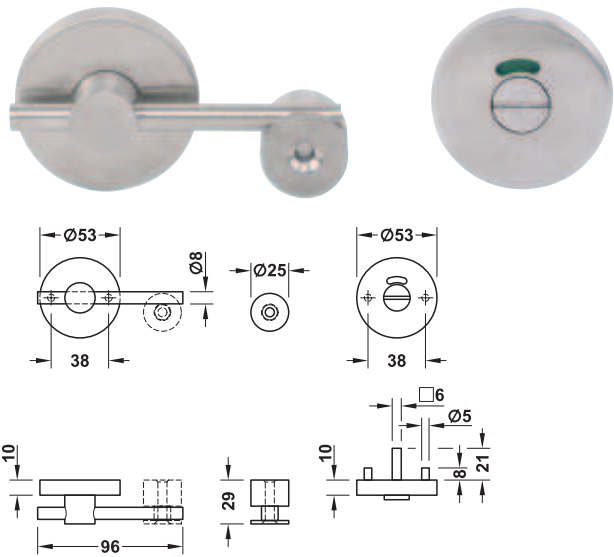


> Area of application: For fixing panel to support tube
> For panel thickness: 8–14 mm

Supplied with
1 panel connection fitting
Fixing material

Material	Finish	Cat. No.
Stainless steel 304	Satin	988.98.050

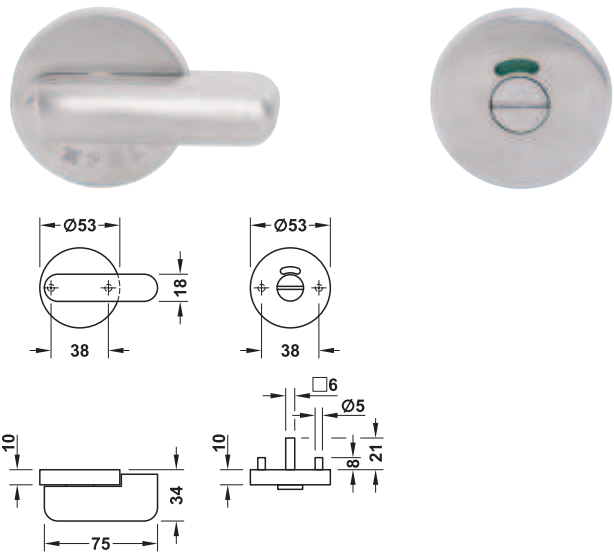
Emergency release indicator and inside turn



> Version:	With indicator disc
------------	---------------------

Material	Finish	Cat. No.
Stainless steel 304	Satin	988.98.140

Emergency release indicator and inside turn



> Version:	With indicator disc
------------	---------------------

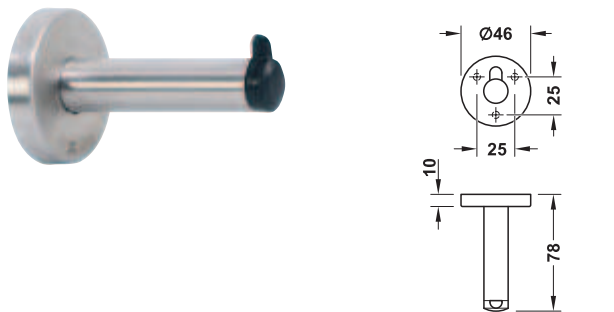
Material	Finish	Cat. No.
Stainless steel 304	Satin	988.98.170

Back to back knob set



Material	Finish	Cat. No.
Stainless steel 304	Satin	988.98.080

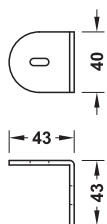
Wall mounted door stop with hook



Supplied with
1 wall mounted door stop
Fixing material

Material	Finish	Cat. No.
Stainless steel 304	Satin	988.98.160

Wall bracket

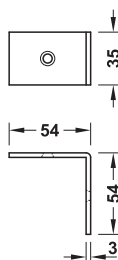


> Area of application: For mounting panel to panel or for mounting panel on wall

Supplied with
1 wall bracket
Fixing material

Material	Finish	Cat. No.
Stainless steel 304	Satin	988.98.010

L-bracket

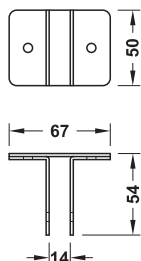


> Area of application: For mounting panel on panel or for mounting panel on wall

Supplied with
1 L-bracket
Fixing material

Material	Finish	Cat. No.
Stainless steel 304	Satin	988.98.020

T-bracket

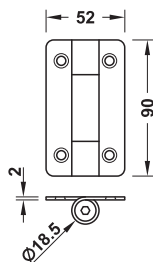


> Area of application: For mounting panel on panel or for mounting panel on wall
> For panel thickness: 8–14 mm

Supplied with
1 T-bracket
Fixing material

Material	Finish	Cat. No.
Stainless steel 304	Satin	988.98.030

Hinge

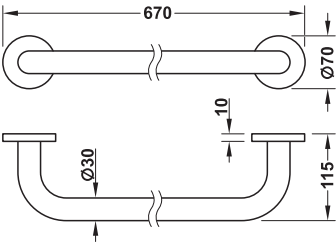


> Material: Stainless steel 304
> Door weight: ≤30 kg with 2 hinges
> Finish: Satin

Supplied with
1 hinge
Fixing material

	Cat. No.
Hinge with spring – adjustable, self closing	988.98.090
Hinge without spring	988.98.091

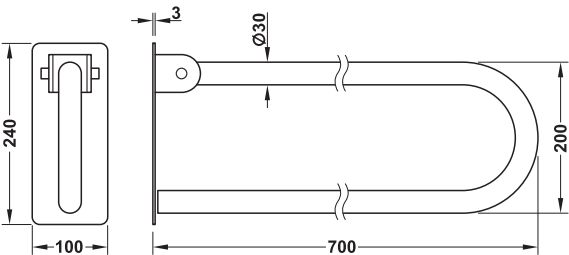
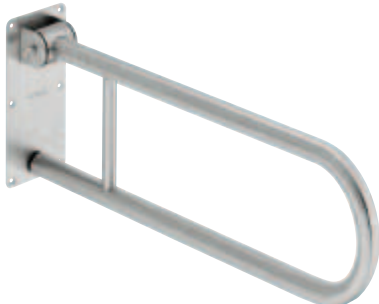
Handle



- > Area of application: For shower and bathtub area
- > Load bearing capacity: 150 kg
- > Installation: For screw fixing
- > Fixing material for solid masonry supplied

Material	Finish/colour	Cat. No.
Stainless steel	Satin	983.14.000

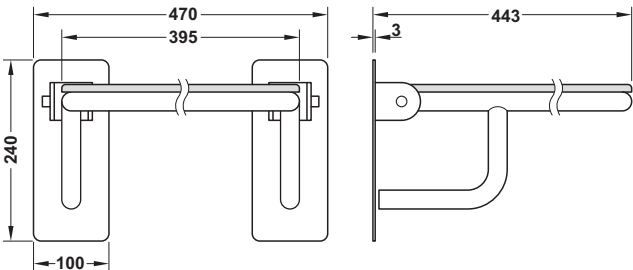
Hinged support rail



- > Area of application: For WC area
- > Load bearing capacity: 150 kg
- > Installation: For screw fixing
- > Fixing material for solid masonry supplied

Material	Finish/colour	Cat. No.
Stainless steel	Satin	983.14.030

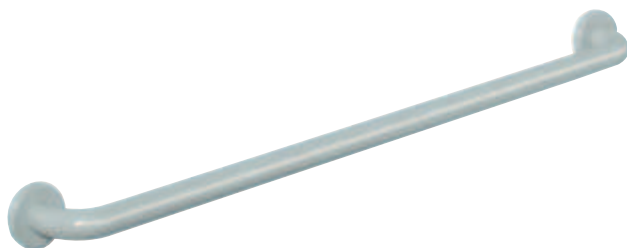
Hinged shower seat



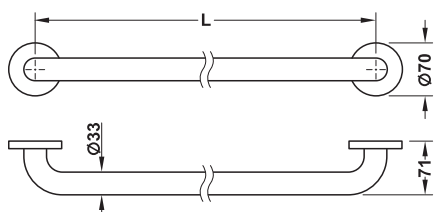
- > Area of application: For shower area
- > Load bearing capacity: 150 kg
- > Installation: For screw fixing
- > Fixing material for solid masonry supplied

Material	Finish/colour	Cat. No.
Stainless steel	Satin	983.14.040

Handle



Without centre support



- > Area of application: For shower and bathtub area
- > Load bearing capacity: 150 kg
- > Installation: For screw fixing
- > Fixing material for solid masonry supplied

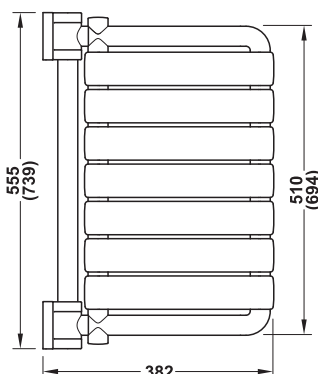
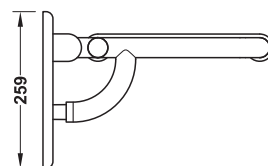
Material	Version	Length mm	Cat. No.
Polyamide	Without centre support	610	988.61.2**
		762	988.61.3**
		914	988.61.4**
		1067	988.61.5**
	With centre support	1219	988.62.3**

Order reference

When ordering, replace the ** of the Cat. No. with the colour number of your choice.

99	92
Pure white	Anthracite grey

Hinged shower seat



- > Area of application: For shower area
- > Load bearing capacity: 204 kg
- > Installation: For screw fixing
- > Fixing material for solid masonry supplied

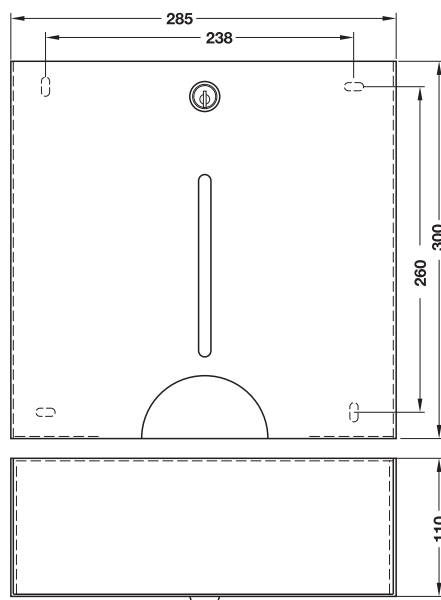
Material	Width mm	Cat. No.
Polyamide	610	980.20.0**
	762	980.20.1**

Order reference

When ordering, replace the ** of the Cat. No. with the colour number of your choice.

99	92
Pure white	Anthracite grey

Paper towel dispenser



- > Version: With cylinder lock and refill indicator
- > Installation: Concealed screws

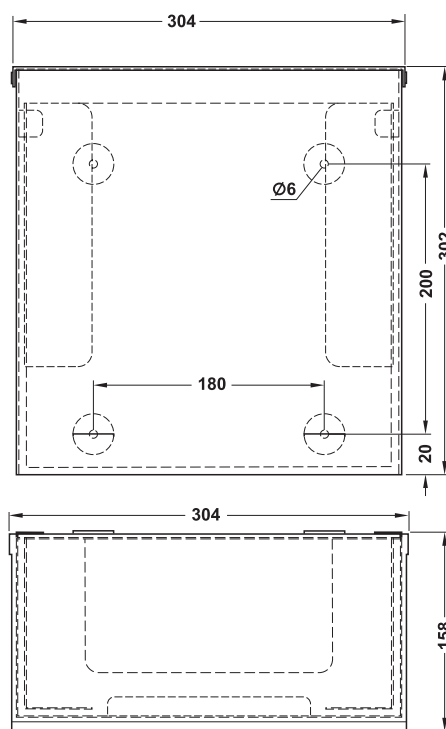
Material	Finish	Cat. No.
Stainless steel (quality 1.4301)	Satin brushed	980.58.000

→ Paper towels

- > Version: With ZZ fold, 2-ply
- > Dim.: 250 x 230 mm
- > Colour: Natural white

Contents	Cat. No.
15 packs of 250 sheets each	007.59.111

Waste bin



- > Installation: Concealed screws

Material	Finish	Cat. No.
Stainless steel (quality 1.4301)	Satin brushed	980.58.010

