

8

HÄFELE

GLASS DOOR FITTINGS





Information



Information on

- > Glass door fittings for hinged doors in residential areas _____ 8.4
- > Glass door fittings for hinged doors for projects _____ 8.24



Model overview for

- > Glass door fittings for hinged doors in residential areas _____ 8.3
- > Glass door fittings for hinged doors for projects _____ 8.23



Residential areas

Startec

- > Model GHR 102 _____ 8.6
- > Model GHR 103 _____ 8.7
- > Model GHR 302 _____ 8.12
- > Model GHR 303 _____ 8.13
- > Model GHR 402 _____ 8.16
- > Model GHR 403 _____ 8.17

No name

- > 2-piece/3-piece hinges _____ 8.22



Projects

Startec

- > Model GHP 103 _____ 8.25
- > Model GHP 203 _____ 8.30
- > 3-piece hinges _____ 8.34



Accessories for hinged doors

Accessories for residential areas and projects

- > Frame parts _____ 8.35
- > Striking plates, WC thumbturn cylinder _____ 8.36
- > Startec – lever handle pairs _____ 8.37
- > Lever handle aperture parts _____ 8.41
- > Startec – slide-on door bolt _____ 8.42



Sliding doors

- > Sliding door locks and deadbolt locks _____ 8.43



Double action doors

- > Startec – glass door fittings for double action doors _____ 8.47
- > Startec – accessories for double action doors _____ 8.56
- > Dorma Glas – Visur patch fitting for double action doors _____ 8.58

Glass door fittings – Startec

GHR 102



> AH 8.6

GHR 103



> AH 8.7

GHR 302



> AH 8.12

GHR 303



> AH 8.13

GHR 402

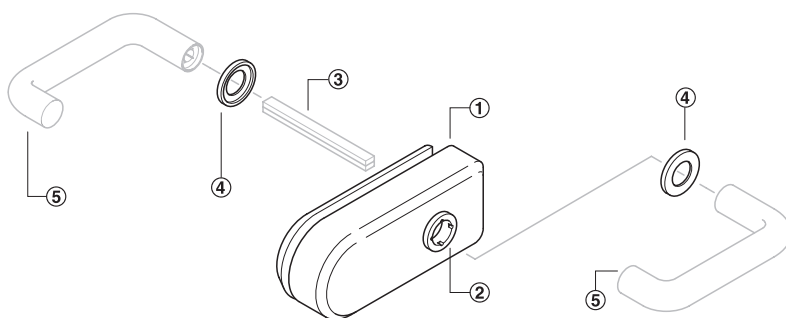


> AH 8.16

GHR 403



> AH 8.17



- ① Lock
- ② Lever handle attachment guide
- ③ Spindle
- ④ Cover rose
- ⑤ Aperture part

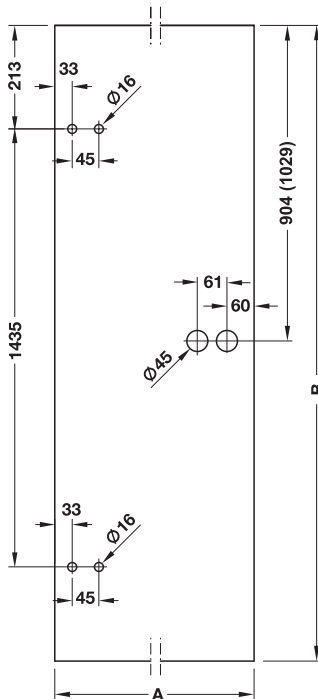
Order reference

Spindle, aperture parts, frame parts, striking plate and profile cylinder are not supplied with the sets, please order separately. Suitable strike patch sets to match all sets are available.

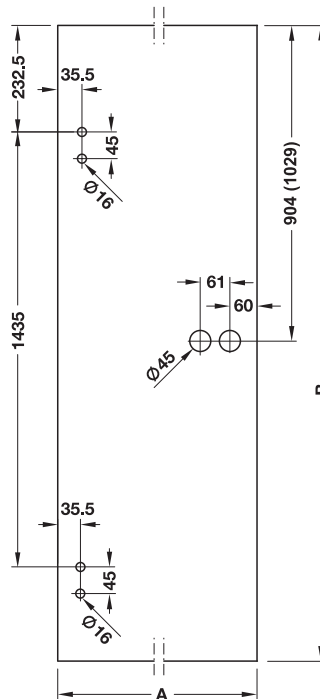


Standard glass preparation – Startec: Lock and strike patch

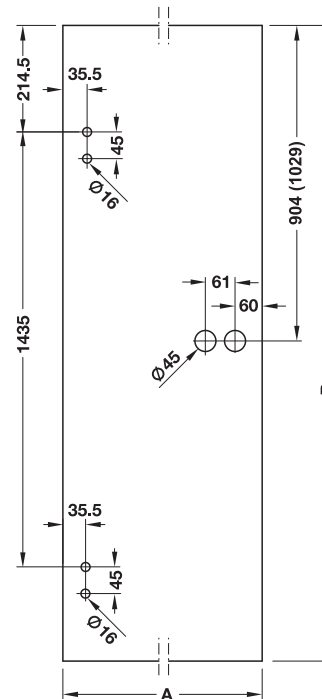
2-piece hinge



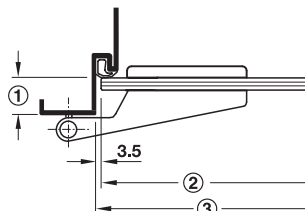
3-piece hinge



3-piece hinge



For frame part
> V 8000 WF ASR



- ① Rebate depth
- ② Glass dimension
- ③ Frame rebate dimension

Note

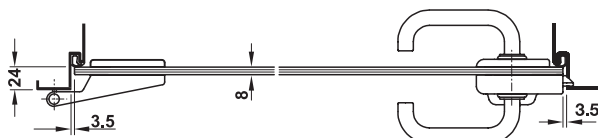
Please note rebate depth and glass weight:

Glass thickness mm	① Rebate depth mm	Door weight kg/m ²
8	24	20
10	26	25
12	28	30

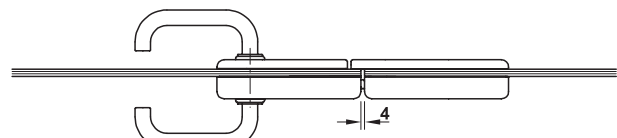
Dimensions for DIN 18101 doors

	Dim. in mm					
Block work standard dim.	750 x 2000	875 x 2000	1000 x 2000	750 x 2125	875 x 2125	1000 x 2125
③ Frame rebate dim.	716 x 1983	841 x 1983	966 x 1983	716 x 2108	841 x 2108	966 x 2108
Standard glass dim. A x B	709 x 1972	834 x 1972	959 x 1972	709 x 2097	834 x 2097	959 x 2097

Installation



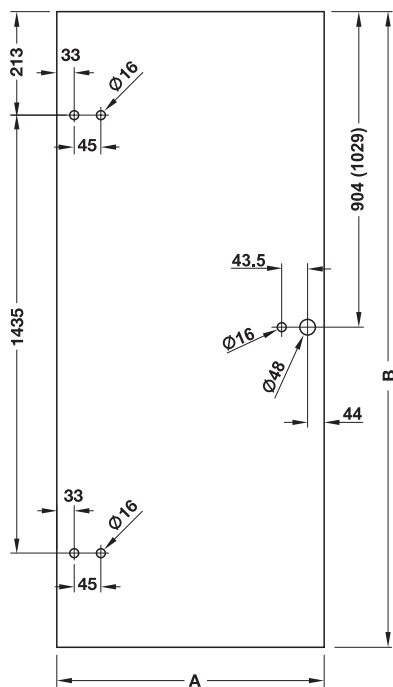
Installation situation DIN left, single door



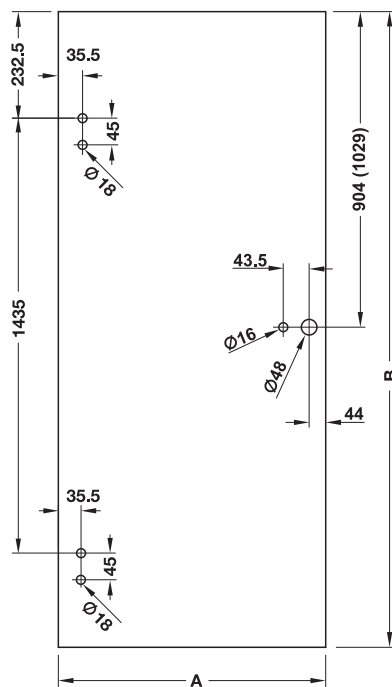
Installation situation DIN left, double door

Special glass preparation – Startec GHR 302/303: Lock and strike patch

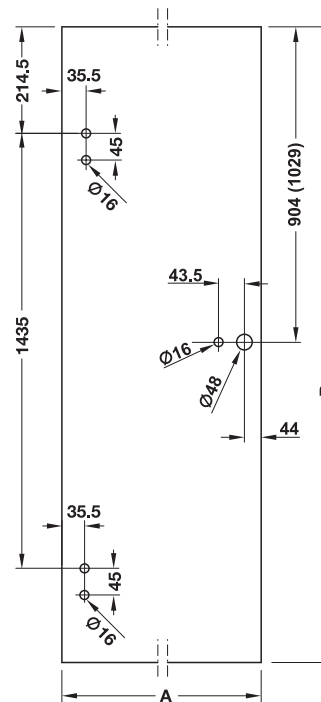
Startec GHR 302
2-piece hinge



Startec GHR 303
3-piece hinge



Startec GHR 303
3-piece hinge



For frame parts
> V 8000 WF ASR

GHR 102 Sets with 2-piece hinges



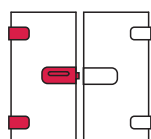
NL set example (with Hoppe Amsterdam E1400 aperture parts, not supplied)

- > Area of application: For doors made of tempered safety glass
- > For glass thickness: 8 mm
- > Material: Covers for lock and strike patch: Stainless steel or aluminium
- > Door weight: ≤45 kg
- > Mounting: For DIN left and DIN right hand use

Note

Please refer to the individual components for more detailed information about technical features.

→ GHR 102 Set With 2-piece hinges



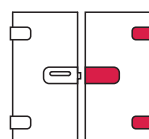
- > Area of application: For single doors

Supplied with

1 patch lock with covers
2 door hinges (2 wing parts, 2 decorative sleeves)
1 key (with lock type CB)
Fixing material
Installation instructions

Finish	CB set	PC set	NL set
Stainless steel covers			
Satin	981.49.207	981.49.211	981.49.201
Aluminium covers			
Silver coloured anodized	981.49.208	981.49.212	981.49.202

→ GHR 102 Strike patch set With 2-piece hinges



- > Area of application: For double doors

Supplied with

1 strike patch with covers
2 door hinges (2 wing parts, 2 decorative sleeves)
Fixing material
Installation instructions

Finish	Cat. No.
Stainless steel covers	
Satin	981.49.600
Aluminium covers	
Silver coloured anodized	981.49.601

Lever handle pairs	► AH 8.37
Frame parts	► AH 8.35
Profile cylinder	► AH 8.36
Glass preparation details	► AH 8.4

Frame parts	► AH 8.37
Glass door bolt	► AH 8.42
Glass preparation details	► AH 8.4

GHR 103 Sets with 3-piece hinges



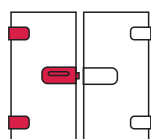
- > Area of application: For doors made of tempered safety glass
- > For glass thickness: 8 mm
- > Material: Covers for lock and strike patch: Stainless steel or aluminium
- > Door weight: ≤55 kg
- > Mounting: For DIN left and DIN right hand use

Note

Please refer to the individual components for more detailed information about technical features.

NL set example (with Hoppe Amsterdam E1400 aperture parts, not supplied)

→ GHR 103 Set With 3-piece hinges



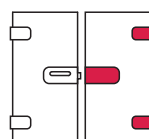
- > Area of application: For single doors

Supplied with

- 1 patch lock with covers
- 2 door hinges (2 wing parts, 2 decorative sleeves)
- 1 key (with lock type CB)
- Fixing material
- Installation instructions

Finish	CB set	PC set	NL set
Stainless steel covers			
Satin	981.49.209	981.49.213	981.49.204
Aluminium covers			
Silver coloured anodized	981.49.210	981.49.214	981.49.206

→ GHR 103 Strike patch set With 3-piece hinges



- > Area of application: For double doors

Supplied with

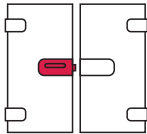
- 1 strike patch with covers
- 2 door hinges (2 wing parts, 2 decorative sleeves)
- Fixing material
- Installation instructions

Finish	Cat. No.
Stainless steel covers	
Satin	981.49.602
Aluminium covers	
Silver coloured anodized	981.49.603

Lever handle pairs	► AH 8.37
Frame parts	► AH 8.35
Profile cylinder	► AH 8.36
Glass preparation details	► AH 8.4

Frame parts	► AH 8.35
Glass door bolt	► AH 8.42
Glass preparation details	► AH 8.4

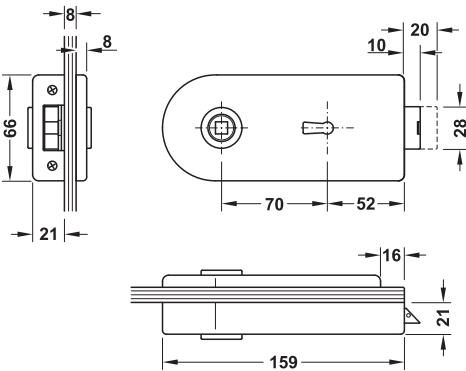
GHR 102 and 103 Individual components
Patch lock



- > Area of application: For doors made of tempered safety glass
- > For glass thickness: 8 mm
- > Material: Covers for lock: Stainless steel or aluminium
- > Version: Continuous visible glass edge within the lock area, patch lock, 2-piece
- > Lever follower: 8 mm
- > Backset: 52 mm
- > Mounting: For DIN left and DIN right hand use

Note
All locks are prepared for DIN left hand.
For changing to DIN right hand, follow installation instructions.

→ CB lock



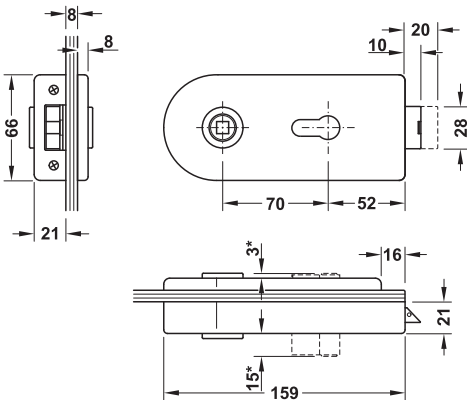
- > Distance: 70 mm

Supplied with
1 patch lock with covers
1 key
Fixing material
Installation instructions

Finish	Cat. No.
Stainless steel covers	
Satin	981.49.502
Aluminium covers	
Silver coloured anodized	981.49.503

Lever handle pairs	► AH 8.37
Glass preparation details	► AH 8.4

→ PC lock



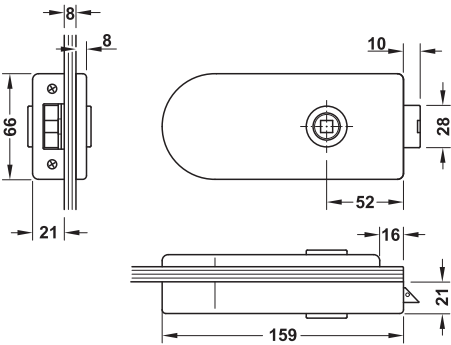
- > Version: With key action
- > Distance: 70 mm

Supplied with
1 patch lock with covers
Fixing material
Installation instructions

Finish	Cat. No.
Stainless steel covers	
Satin	981.49.504
Aluminium covers	
Silver coloured anodized	981.49.505

Lever handle pairs	► AH 8.37
Profile cylinder	► AH 8.36
Glass preparation details	► AH 8.4

→ NL lock

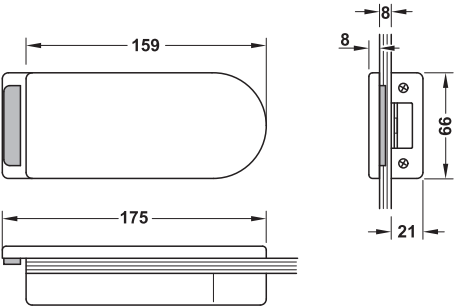
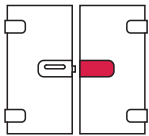


> Version: Front lever handle

Supplied with
1 patch lock with covers
Fixing material
Installation instructions

Finish	Cat. No.
Stainless steel covers	
Satin	981.49.500
Aluminium covers	
Silver coloured anodized	981.49.501

→ Strike patch



- > Area of application: For double doors made of tempered safety glass
- > For glass thickness: 8 mm
- > Material: Covers for strike patch: Stainless steel or aluminium
- > Version: 2-piece, with stop, protrudes the glass edge
- > Mounting: For DIN left and DIN right hand use

Supplied with
1 strike patch with covers
Fixing material
Installation instructions

Finish	Cat. No.
Stainless steel covers	
Satin	981.49.420
Aluminium covers	
Silver coloured anodized	981.49.421

Lever handle pairs	► AH 8.37
Glass preparation details	► AH 8.4

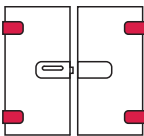
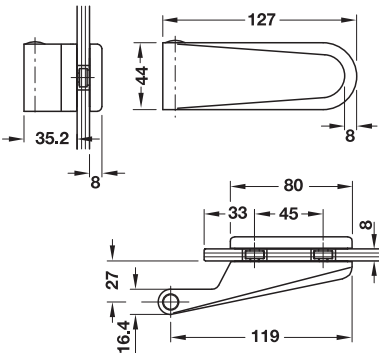
Glass preparation details	► AH 8.4
---------------------------	----------

→ 2-Piece hinge (wing part)



Stainless steel cover

Aluminium cover

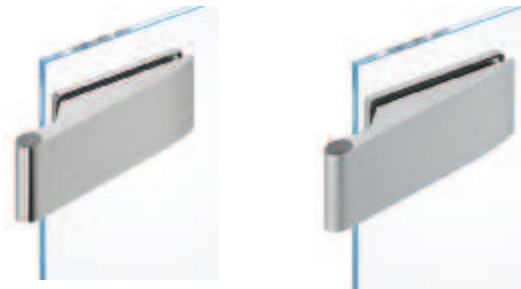


- > Area of application: For wooden or steel frames
- > For glass thickness: 8 mm
- > Door weight: ≤45 kg
- > Knuckle Ø: 16.4 mm

Supplied with
2 door hinges (wing part)
2 decorative sleeves (for frame parts with knuckle Ø 15 mm)
Fixing material
Installation instructions

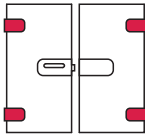
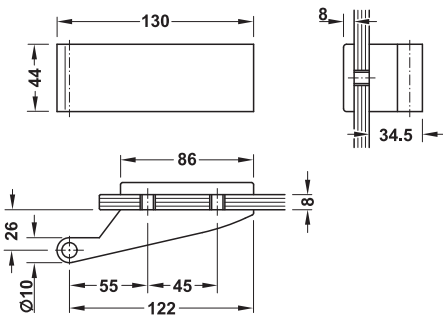
Material	Finish	Cat. No.
Stainless steel	Satin	981.49.000
Aluminium	Silver coloured anodized	981.49.001

→ 2-Piece hinge (wing part)



Stainless steel cover

Aluminium cover



- > Area of application: For wooden or steel frames
- > For glass thickness: 8 mm
- > Door weight: ≤45 kg
- > Knuckle Ø: 16.4 mm

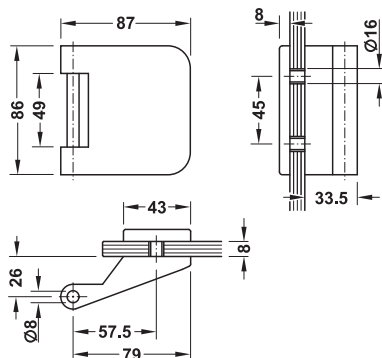
Supplied with
2 door hinges (wing part)
2 decorative sleeves (for frame parts with knuckle Ø 15 mm)
Fixing material
Installation instructions

Material	Finish	Cat. No.
Stainless steel	Satin	981.49.020
Aluminium	Silver coloured anodized	981.49.021

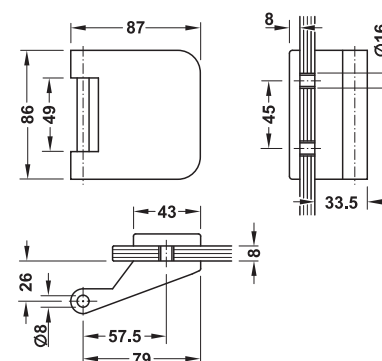
Frame parts	► AH 8.35
Glass preparation details	► AH 8.4

Frame parts	► AH 8.35
Glass preparation details	► AH 8.4

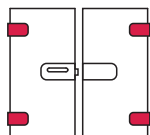
→ 3-Piece hinge (wing part)



Stainless steel cover



Aluminium cover



- > Area of application: For wooden or steel frames
- > For glass thickness: 8 mm
- > Door weight: ≤55 kg
- > Knuckle Ø: 16.4 mm

Supplied with

- 2 door hinges (wing part)
- 2 decorative sleeves (for frame parts with knuckle Ø15 mm)
- Fixing material
- Installation instructions

Material	Finish	Cat. No.
Stainless steel	Satin	981.49.007
Aluminium	Silver coloured anodized	981.49.006

Frame parts	► AH 8.35
Glass preparation details	► AH 8.4

ONE ROOM. ONE FACE.

HÄFELE HOTEL ASSORTMENT.



The hotel room as a cohesive unit in style. Consistently achievable with the Häfele hotel assortment. Consistently composed shapes and surfaces. From the entrance to the bathroom. From the locking system to the towel holders. Everything from one source. Worldwide.

Further information
www.hafele.com

GHR 302 Sets with 2-piece hinges



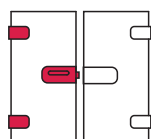
NL set example (with Hoppe Amsterdam E1400 aperture parts, not supplied)

- > Area of application: For doors made of tempered safety glass
- > For glass thickness: 8 mm
- > Material: Covers for lock: Stainless steel or aluminium, for strike patch: Stainless steel
- > Door weight: ≤45 kg
- > Mounting: For DIN left and DIN right hand use

Note

Please refer to the individual components for more detailed information about technical features.

→ GHR 302 Set With 2-piece hinges



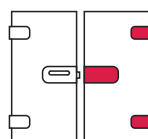
- > Area of application: For single doors

Supplied with

1 patch lock with covers
2 door hinges (2 wing parts, 2 decorative sleeves)
Fixing material
Installation instructions

Finish	NL set
Stainless steel covers	
Satin	981.49.215
Aluminium covers	
Silver coloured anodized	981.49.216

→ GHR 302 Strike patch set With 2-piece hinges



- > Area of application: For double doors

Supplied with

1 strike patch with covers
2 door hinges (2 wing parts, 2 decorative sleeves)
Fixing material
Installation instructions

Finish	Cat. No.
Stainless steel covers	
Satin	981.49.608

Lever handle pairs	► AH 8.37
Frame parts	► AH 8.35
Striking plates	► AH 8.35
Glass preparation details	► AH 8.5

Frame parts	► AH 8.37
Glass door bolt	► AH 8.42
Glass preparation details	► AH 8.5

GHR 303 Sets with 3-piece hinges



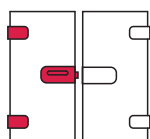
NL set example (with Hoppe Amsterdam E1400 aperture parts, not supplied)

- > Area of application: For doors made of tempered safety glass
- > For glass thickness: 8 mm
- > Material: Covers for lock: Stainless steel or aluminium, for strike patch: Stainless steel
- > Door weight: ≤55 kg
- > Mounting: For DIN left and DIN right hand use

Note

Please refer to the individual components for more detailed information about technical features.

→ GHR 303 Set With 3-piece hinges



- > Area of application: For single doors

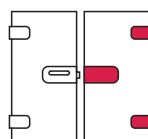
Supplied with

- 1 patch lock with covers
- 2 door hinges (2 wing parts, 2 decorative sleeves)
- Fixing material
- Installation instructions

Finish	NL set
Stainless steel covers	
Satin	981.49.217
Aluminium covers	
Silver coloured anodized	981.49.218

Lever handle pairs	► AH 8.37
Frame parts	► AH 8.35
Striking plates	► AH 8.35
Glass preparation details	► AH 8.5

→ GHR 303 Strike patch set With 3-piece hinges



- > Area of application: For double doors

Supplied with

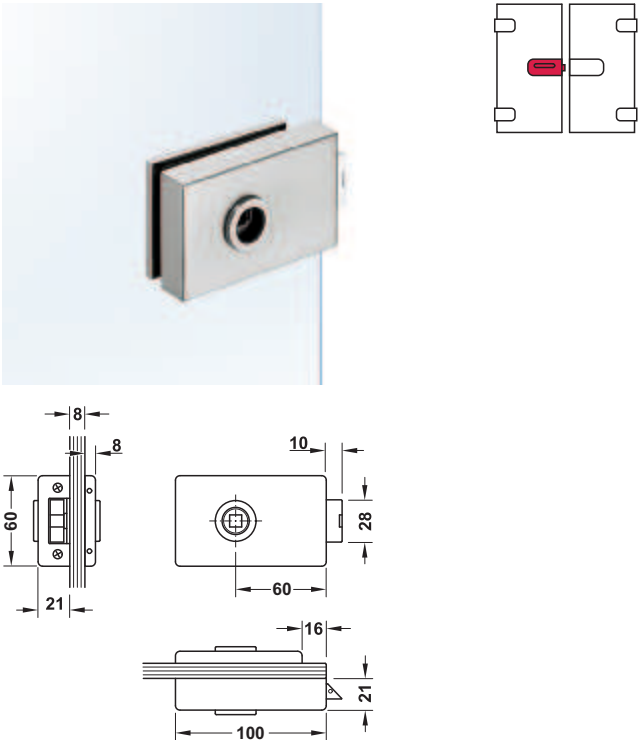
- 1 strike patch with covers
- 2 door hinges (2 wing parts, 2 decorative sleeves)
- Fixing material
- Installation instructions

Finish	Cat. No.
Stainless steel covers	
Satin	981.49.609

Frame parts	► AH 8.35
Glass door bolt	► AH 8.42
Glass preparation details	► AH 8.5

GHR 302 and 303 Individual components

→ Patch lock



Note
All locks are prepared for DIN left hand.
For changing to DIN right hand, follow installation instructions.

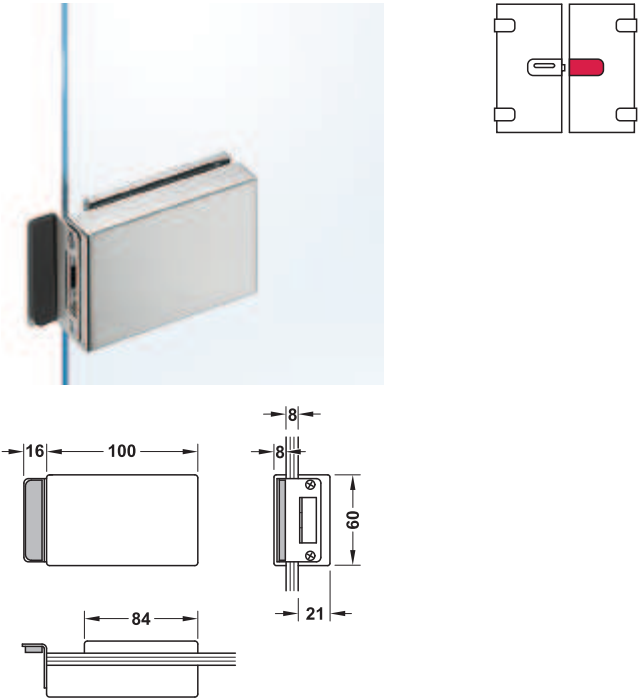
- > Area of application: For doors made of tempered safety glass
- > For glass thickness: 8 mm
- > Material: Covers for lock: Stainless steel or aluminium
- > Version: Continuous visible glass edge within the lock area, patch lock, 2-piece
- > Lever follower: 8 mm
- > Mounting: For DIN left and DIN right hand use

Supplied with
1 patch lock with covers
Fixing material
Installation instructions

Finish	Cat. No.
Stainless steel covers	
Satin	981.49.520
Aluminium covers	
Silver coloured anodized	981.49.521

Lever handle pairs	► AH 8.37
Glass preparation details	► AH 8.5

→ Strike patch



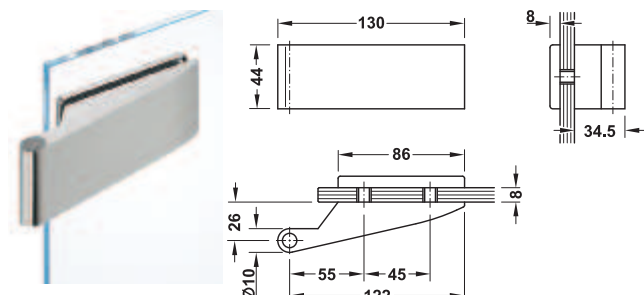
- > Area of application: For double doors made of tempered safety glass
- > For glass thickness: 8 mm
- > Material: Covers for strike patch: Stainless steel
- > Version: 2-piece, with stop, protrudes the glass edge
- > Mounting: For DIN left and DIN right hand use

Supplied with
1 strike patch with covers
Fixing material
Installation instructions

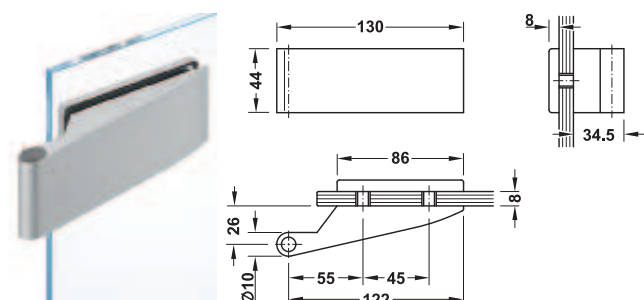
Finish	Cat. No.
Stainless steel covers	
Satin	981.49.440

Glass preparation details	► AH 8.5
---------------------------	----------

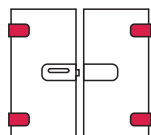
→ 2-Piece hinge (wing part)



Stainless steel cover



Aluminium cover



- > Area of application: For wooden or steel frames
- > For glass thickness: 8 mm
- > Door weight: ≤45 kg
- > Knuckle Ø: 16.4 mm

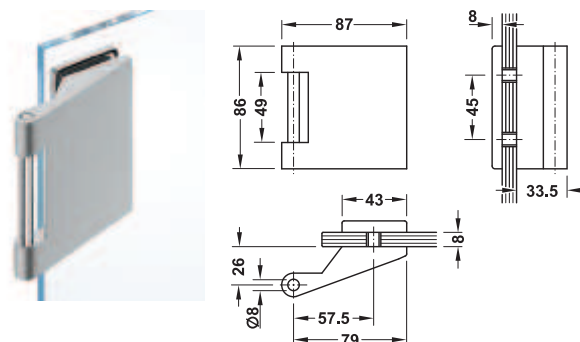
Supplied with

2 door hinges (wing part)
2 decorative sleeves (for frame parts with knuckle Ø 15 mm)
Fixing material
Installation instructions

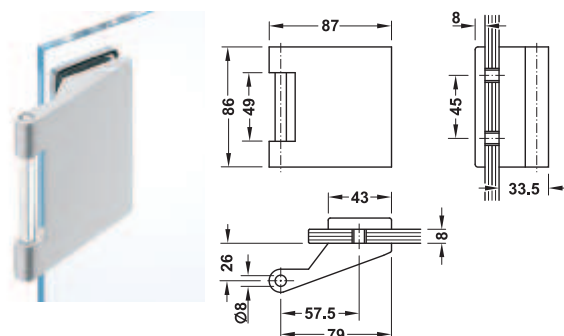
Material	Finish	Cat. No.
Stainless steel	Satin	981.49.020
Aluminium	Silver coloured anodized	981.49.021

Frame parts	► AH 8.35
Glass preparation details	► AH 8.5

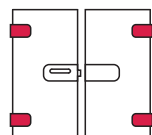
→ 3-Piece hinge (wing part)



Stainless steel cover



Aluminium cover



- > Area of application: For wooden or steel frames
- > For glass thickness: 8 mm
- > Door weight: ≤55 kg
- > Knuckle Ø: 16.4 mm

Supplied with

2 door hinges (wing part)
2 decorative sleeves (for frame parts with knuckle Ø 15 mm)
Fixing material
Installation instructions

Material	Finish	Cat. No.
Stainless steel	Satin	981.49.017
Aluminium	Silver coloured anodized	981.49.016

Frame parts	► AH 8.35
Glass preparation details	► AH 8.5

GHR 402 Sets with 2-piece hinges



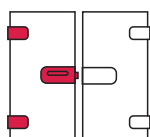
NL set example (with Hoppe Amsterdam E1400 aperture parts, not supplied)

- > Area of application: For doors made of tempered safety glass
- > For glass thickness: 8 mm
- > Material: Covers for lock and strike patch: Stainless steel or aluminium
- > Door weight: ≤45 kg
- > Mounting: For DIN left and DIN right hand use

Note

Please refer to the individual components for more detailed information about technical features.

→ GHR 402 Set With 2-piece hinges



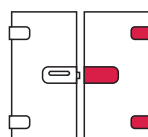
- > Area of application: For single doors

Supplied with

1 patch lock with covers
2 door hinges (2 wing parts, 2 decorative sleeves)
2 keys (with lock type CB)
Fixing material
Installation instructions

Finish	CB set	PC set	NL set
Stainless steel covers			
Satin	981.49.223	981.49.228	981.49.219
Aluminium covers			
Silver coloured anodized	981.49.224	981.49.229	981.49.220

→ GHR 402 Strike patch set With 2-piece hinges



- > Area of application: For double doors

Supplied with

1 strike patch with covers
2 door hinges (2 wing parts, 2 decorative sleeves)
Fixing material
Installation instructions

Finish	Cat. No.
Stainless steel covers	
Satin	981.49.610
Aluminium covers	
Silver coloured anodized	981.49.611

Lever handle pairs	► AH 8.37
Frame parts	► AH 8.35
Striking plates	► AH 8.35
Glass preparation details	► AH 8.4

Frame parts	► AH 8.35
Glass door bolt	► AH 8.42
Glass preparation details	► AH 8.4

GHR 403 Sets with 3-piece hinges



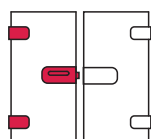
- > Area of application: For doors made of tempered safety glass
- > For glass thickness: 8 mm
- > Material: Covers for lock and strike patch: Stainless steel or aluminium
- > Door weight: ≤55 kg
- > Mounting: For DIN left and DIN right hand use

Note

Please refer to the individual components for more detailed information about technical features.

NL set example (with Hoppe Amsterdam E1400 aperture parts, not supplied)

→ GHR 403 Set With 3-piece hinges



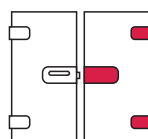
- > Area of application: For single doors

Supplied with

1 patch lock with covers
2 door hinges (2 wing parts, 2 decorative sleeves)
1 key (with lock type CB)
Fixing material
Installation instructions

Finish	CB set	PC set	NL set
Stainless steel covers			
Satin	981.49.226	981.49.230	981.49.221
Aluminium covers			
Silver coloured anodized	981.49.227	981.49.231	981.49.222

→ GHR 403 Strike patch set With 3-piece hinges



- > Area of application: For double doors

Supplied with

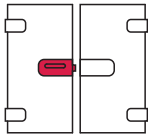
1 strike patch with covers
2 door hinges (2 wing parts, 2 decorative sleeves)
Fixing material
Installation instructions

Finish	Cat. No.
Stainless steel covers	
Satin	981.49.612
Aluminium covers	
Silver coloured anodized	981.49.613

Lever handle pairs	► AH 8.37
Frame parts	► AH 8.35
Striking plates	► AH 8.35
Glass preparation details	► AH 8.4

Frame parts	► AH 8.35
Glass door bolt	► AH 8.42
Glass preparation details	► AH 8.4

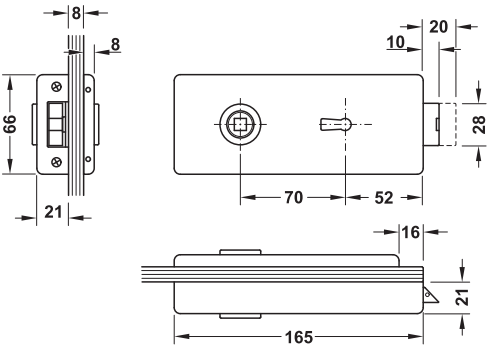
GHR 402 and 403 Individual components
Patch lock



- > Area of application: For doors made of tempered safety glass
- > For glass thickness: 8 mm
- > Material: Covers for lock: Stainless steel or aluminium
- > Version: Continuous visible glass edge within the lock area, low-noise patch lock, 2-piece
- > Lever follower: 8 mm
- > Backset: 52 mm
- > Mounting: For DIN left and DIN right hand use

Note
All locks are prepared for DIN left hand.
For changing to DIN right hand, follow installation instructions.

→ CB lock



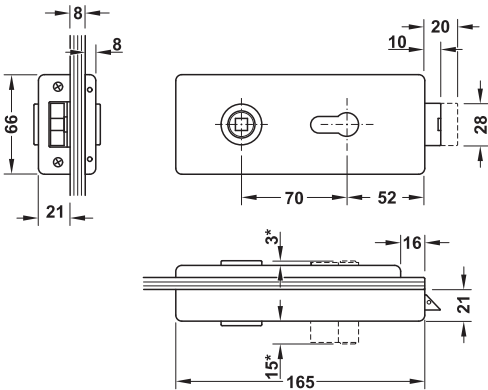
- > Distance: 70 mm

Supplied with
1 patch lock with covers
1 key
Fixing material
Installation instructions

Finish	Cat. No.
Stainless steel covers	
Satin	981.49.532
Aluminium covers	
Silver coloured anodized	981.49.533

Lever handle pairs	► AH 8.37
Striking plates	► AH 8.35
Glass preparation details	► AH 8.4

→ PC lock



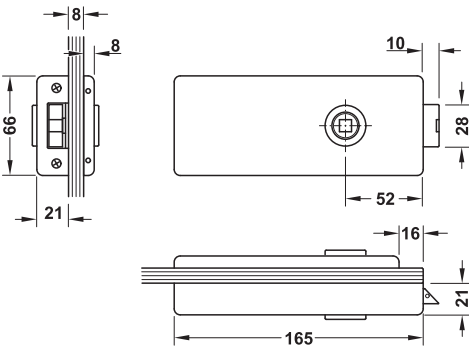
- > Version: With key action
- > Distance: 70 mm

Supplied with
1 patch lock with covers
Fixing material
Installation instructions

Finish	Cat. No.
Stainless steel covers	
Satin	981.49.534
Aluminium covers	
Silver coloured anodized	981.49.535

Lever handle pairs	► AH 8.37
Striking plates	► AH 8.35
Glass preparation details	► AH 8.4

→ NL lock

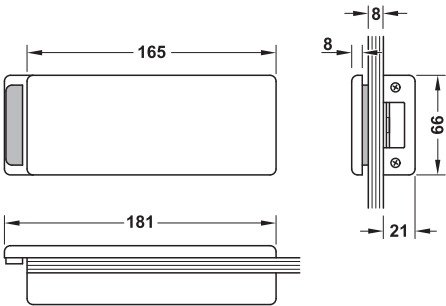
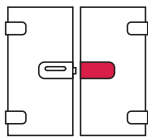


> Version: Front lever handle

Supplied with
1 patch lock with covers
Fixing material
Installation instructions

Finish	Cat. No.
Stainless steel covers	
Satin	981.49.530
Aluminium covers	
Silver coloured anodized	981.49.531

→ Strike patch



- > Area of application: For double doors made of tempered safety glass
- > For glass thickness: 8 mm
- > Material: Covers for strike patch: Stainless steel or aluminium
- > Version: 2-piece, with stop, protrudes the glass edge
- > Mounting: For DIN left and DIN right hand use

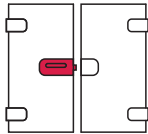
Supplied with
1 strike patch with covers
Fixing material
Installation instructions

Finish	Cat. No.
Stainless steel covers	
Satin	981.49.450
Aluminium covers	
Silver coloured anodized	981.49.451

Lever handle pairs	► AH 8.37
Striking plates	► AH 8.35
Glass preparation details	► AH 8.4

Glass door bolt	► AH 8.42
Glass preparation details	► AH 8.4

GHR 412 and 413 Individual components
Patch lock



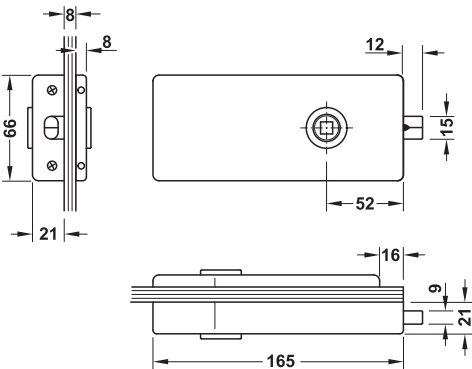
With magnetic latchbolt



- > Area of application: For doors made of tempered safety glass
- > For glass thickness: 8 mm
- > Material: Covers for lock: Stainless steel
- > Version: Continuous visible glass edge within the lock area, low-noise patch lock, 2-piece
- > Lever follower: 8 mm
- > Backset: 52 mm
- > Mounting: For DIN left and DIN right hand use

Note
All locks are prepared for DIN left hand.
For changing to DIN right hand, follow installation instructions.

→ NL lock

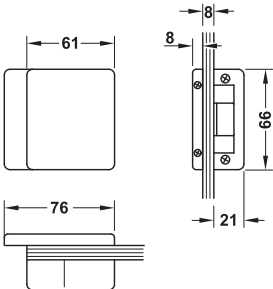
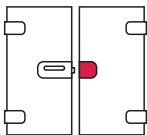


> Version: Front lever handle

Supplied with
1 patch lock with covers
1 magnetic insert for striking plate
Fixing material
Installation instructions

Finish	Cat. No.
Satin	981.49.550

→ Strike patch



- > Area of application: For double doors made of tempered safety glass
- > For glass thickness: 8 mm
- > Material: Covers for strike patch: Stainless steel
- > Version: 2-piece, with stop, protrudes the glass edge
- > Mounting: For DIN left and DIN right hand use

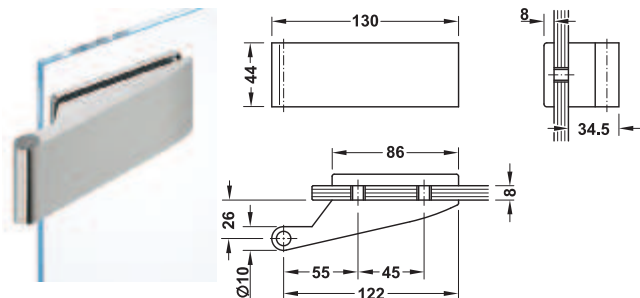
Supplied with
1 strike patch with covers
1 magnetic insert
Fixing material
Installation instructions

Finish	Cat. No.
Satin	981.49.452

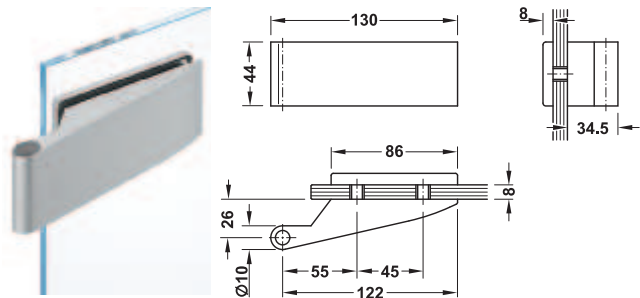
Lever handle pairs	► AH 8.37
Striking plates	► AH 8.35
Glass preparation details	► AH 8.4

Glass door bolt	► AH 8.42
Glass preparation details	► AH 8.4

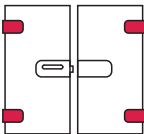
→ 2-Piece hinge (wing part)



Stainless steel cover



Aluminium cover



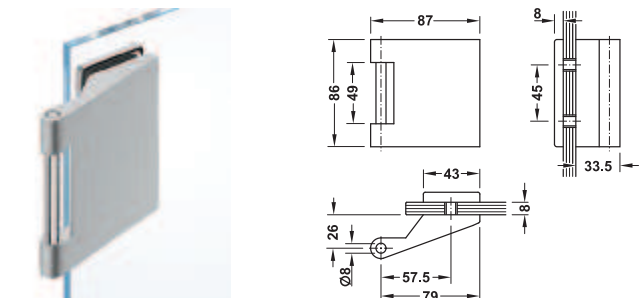
- > Area of application: For wooden or steel frames
- > For glass thickness: 8 mm
- > Door weight: ≤45 kg
- > Knuckle Ø: 16.4 mm

Supplied with
2 door hinges (wing part)
2 decorative sleeves (for frame parts with knuckle Ø 15 mm)
Fixing material
Installation instructions

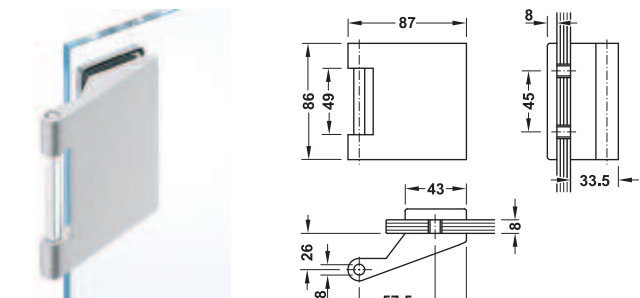
Material	Finish	Cat. No.
Stainless steel	Satin	981.49.020
Aluminium	Silver coloured anodized	981.49.021

Frame parts	► AH 8.35
Glass preparation details	► AH 8.4

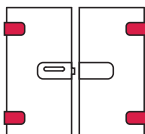
→ 3-Piece hinge (wing part)



Stainless steel cover



Aluminium cover



- > Area of application: For wooden or steel frames
- > For glass thickness: 8 mm
- > Door weight: ≤55 kg
- > Knuckle Ø: 16.4 mm

Supplied with
2 door hinges (wing part)
2 decorative sleeves (for frame parts with knuckle Ø 15 mm)
Fixing material
Installation instructions

Material	Finish	Cat. No.
Stainless steel	Satin	981.49.017
Aluminium	Silver coloured anodized	981.49.016

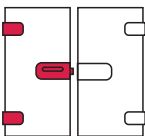
Frame parts	► AH 8.35
Glass preparation details	► AH 8.4

DGH-B-INT 2019, HDE-en, 12/18; Dimensional data not binding. We reserve the right to alter specifications without notice.

Set
With 2-piece hinges



NL set example



With low-noise patch lock



- > Area of application: For single doors made of tempered safety glass
- > For glass thickness: 8 mm
- > Material: Covers for lock: Stainless steel, door hinge: Aluminium, stainless steel coloured
- > Door weight: ≤45 kg
- > Mounting: For DIN left and DIN right hand use

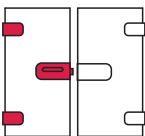
Supplied with
1 patch lock with covers
2 door hinges (2 wing parts, 2 decorative sleeves)
1 lever handle set
Fixing material
Installation instructions

Finish	NL set
Satin	981.49.203

Set
With 3-piece hinges



NL set example



With low-noise patch lock



- > Area of application: For single doors made of tempered safety glass
- > For glass thickness: 8 mm
- > Material: Covers for lock: Stainless steel, door hinge: Aluminium, stainless steel coloured
- > Door weight: ≤55 kg
- > Mounting: For DIN left and DIN right hand use

Supplied with
1 patch lock with covers
2 door hinges (2 wing parts, 2 decorative sleeves)
1 door handle set
Fixing material
Installation instructions

Finish	PC set	NL set
Satin	981.49.291	981.49.290

Glass door fittings – Startec

GHP 103



> AH 8.25

GHP 203



> AH 8.30

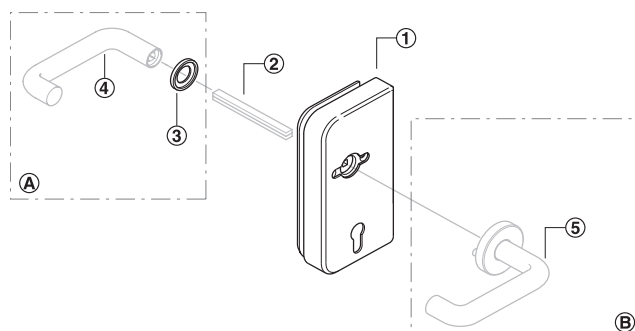
Startec Glass door fittings – 3-piece hinges

3-piece hinge

Self-closing



> AH 8.34



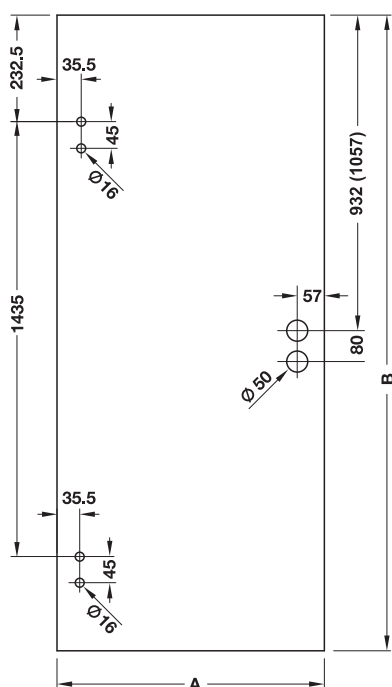
- ① Lock
- ② Spindle
- ③ Cover rose
- ④ Aperture part
- ⑤ Lever handle with handle rose
- Ⓐ Installation with lock for lever handle without handle rose
- Ⓑ Installation with lock for lever handle with handle rose

Order reference

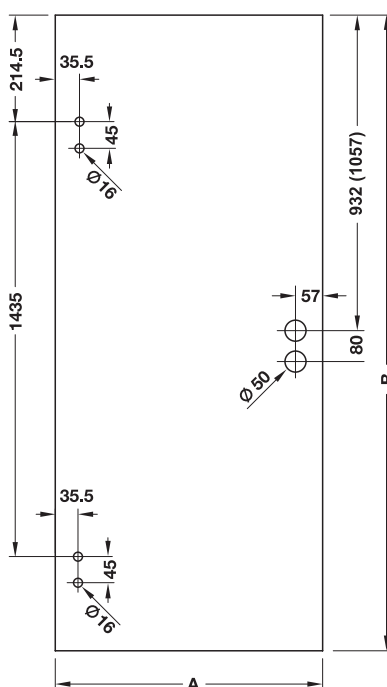
Spindle, aperture parts, frame parts, striking plate and profile cylinder are not supplied with the sets, please order separately. Suitable strike patch sets to match all sets are available.

Standard glass preparation – Startec

3-piece hinge



3-piece hinge

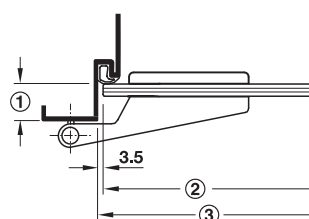


For frame parts

- > V 4400 GL
- > V 4400 WF
- > V 8000 S-GL
- > V 8000 WF

For frame parts

- > VX
- > VN



- ① Rebate depth
- ② Glass dimension
- ③ Frame rebate dimension

Note

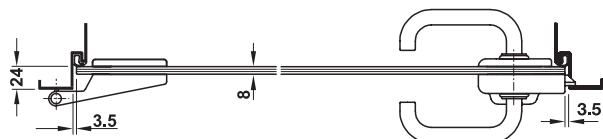
Please note rebate depth and glass weight:

Glass thickness mm	① Rebate depth mm	Door weight kg/m ²
8	24	20
10	26	25
12	28	30

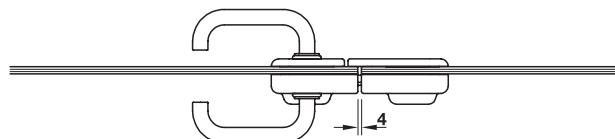
Dimensions for DIN 18101 doors

	Dim. in mm					
Block work standard dim.	750 x 2000	875 x 2000	1000 x 2000	750 x 2125	875 x 2125	1000 x 2125
③ Frame rebate dim.	716 x 1983	841 x 1983	966 x 1983	716 x 2108	841 x 2108	966 x 2108
Standard glass dim. A x B	709 x 1972	834 x 1972	959 x 1972	709 x 2097	834 x 2097	959 x 2097

Installation



Installation situation DIN left, single door



Installation situation DIN left, double door

GHP 103 Sets with 3-piece hinges



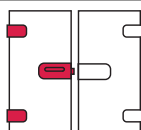
PC set example (with Hoppe Verona E1800Z aperture parts, not supplied)

- > Area of application: For doors made of tempered safety glass
- > For glass thickness: 8 mm
- > Material: Covers for lock and strike patch: Stainless steel or aluminium
- > Door weight: ≤55 kg
- > Mounting: For DIN left and DIN right hand use

Note

Please refer to the individual components for more detailed information about technical features.

→ GHP 103 Set With 3-piece hinges



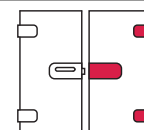
- > Area of application: For single doors

Supplied with

- 1 patch lock with covers
- 2 door hinges (2 wing parts, 2 decorative sleeves)
- 1 key (with lock type CB)
- Fixing material
- Installation instructions

Type of locking	Material	Finish	DIN left	DIN right
For lever handles without handle roses				
CB	Stainless steel	Satin	981.49.241	981.49.243
	Aluminium	Silver coloured anodized	981.49.242	981.49.244
PC	Stainless steel	Satin	981.49.249	981.49.251
	Aluminium	Silver coloured anodized	981.49.250	981.49.252
WC/ bathroom	Stainless steel	Satin	981.49.258	981.49.259
NL	Stainless steel	Satin	981.49.232	981.49.234
	Aluminium	Silver coloured anodized	981.49.233	981.49.236
For lever handles with handle roses				
CB	Stainless steel	Satin	981.49.245	981.49.247
	Aluminium	Silver coloured anodized	981.49.246	981.49.248
PC	Stainless steel	Satin	981.49.253	981.49.256
	Aluminium	Silver coloured anodized	981.49.254	981.49.257
WC/ bathroom	Stainless steel	Satin	981.49.260	981.49.261
NL	Stainless steel	Satin	981.49.237	981.49.239
	Aluminium	Silver coloured anodized	981.49.238	981.49.240

→ GHP 103 Strike patch set With 3-piece hinges



- > Area of application: For double doors

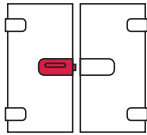
Supplied with

- 1 strike patch with covers
- 2 door hinges (2 wing parts, 2 decorative sleeves)
- Fixing material
- Installation instructions

Finish	DIN left	DIN right
Stainless steel covers		
Satin	981.49.614	981.49.616
Aluminium covers		
Silver coloured anodized	981.49.615	981.49.617

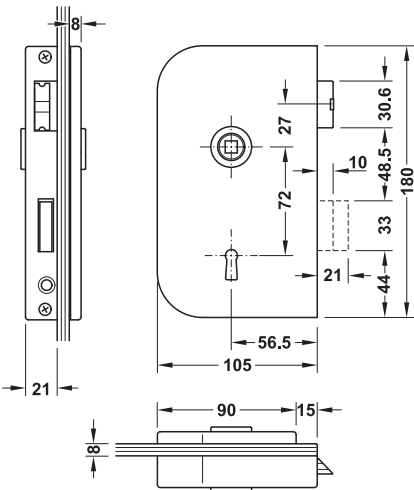
Lever handle pairs	► AH 8.37
Frame parts	► AH 8.35
Striking plates	► AH 8.35
Glass preparation details	► AH 8.24

GHP 103 Individual components
Patch lock



- > Area of application: For doors made of tempered safety glass
- > For glass thickness: 8 mm
- > Material: Covers for lock: Stainless steel or aluminium
- > Version: Continuous visible glass edge within the lock area, 2-piece, in compliance with DIN 18251, grade 3, lever follower: Clamping follower, for lever handles without handle roses or for lever handles with handle roses (optional)
- > Lever follower: 8 mm
- > Backset: 56.5 mm
- > Mounting: For DIN left and DIN right hand use

→ CB lock

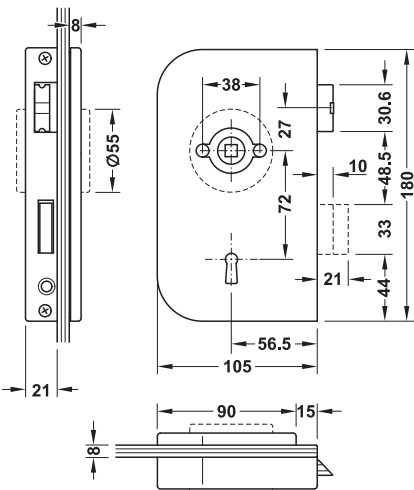


Cipher bit lock (CB), for lever handles without handle roses

- > Deadbolt: 2-turn
- > Distance: 72 mm

Supplied with
1 patch lock with covers
1 key
Fixing material
Installation instructions

Material	Finish	DIN left	DIN right
For lever handles without handle roses			
Stainless steel	Satin	981.49.142	981.49.152
Aluminium	Silver coloured anodized	981.49.143	981.49.153
For lever handles with handle roses			
Stainless steel	Satin	981.49.162	981.49.172
Aluminium	Silver coloured anodized	981.49.163	981.49.173

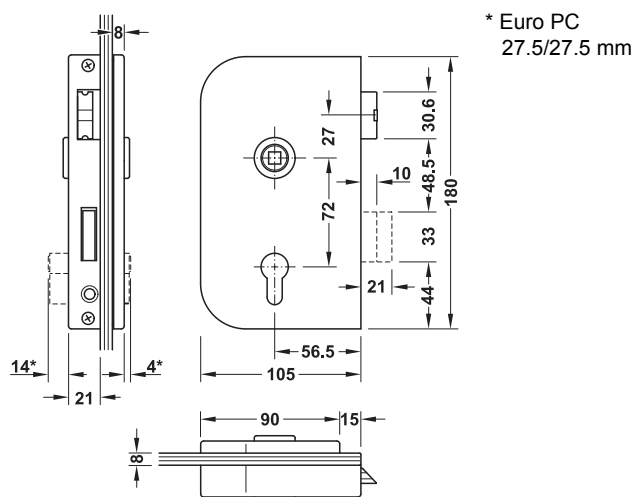


Cipher bit lock (CB), for lever handles with handle roses

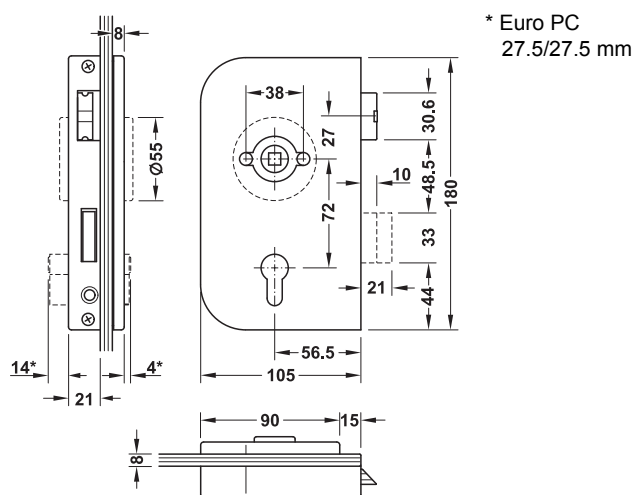
Lever handle pairs	► AH 8.37
Striking plates	► AH 8.35
Glass preparation details	► AH 8.24

DGH-B-INT 2019, HDE-en, 12/18; Dimensional data not binding. We reserve the right to alter specifications without notice.

→ PC lock



For profile cylinder (PC), for lever handles without handle roses



For profile cylinder (PC), for lever handles with handle roses

- > Version: With key action
- > Deadbolt: 2-turn
- > Distance: 72 mm

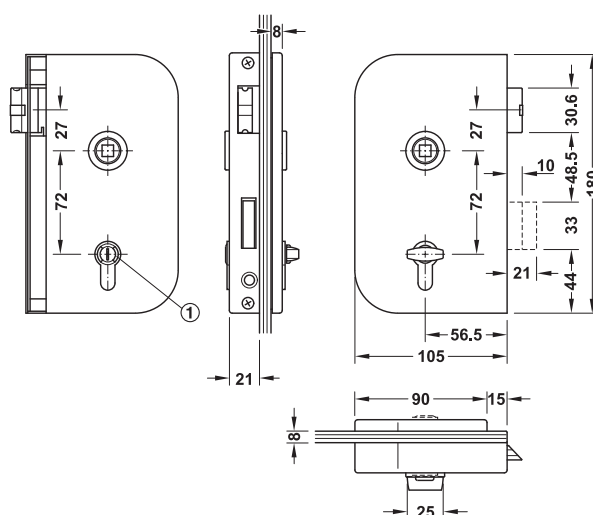
Supplied with

1 patch lock with covers
Fixing material
Installation instructions

Material	Finish	DIN left	DIN right
For lever handles without handle roses			
Stainless steel	Satin	981.49.140	981.49.150
Aluminium	Silver coloured anodized	981.49.141	981.49.151
For lever handles with handle roses			
Stainless steel	Satin	981.49.160	981.49.170
Aluminium	Silver coloured anodized	981.49.161	981.49.171

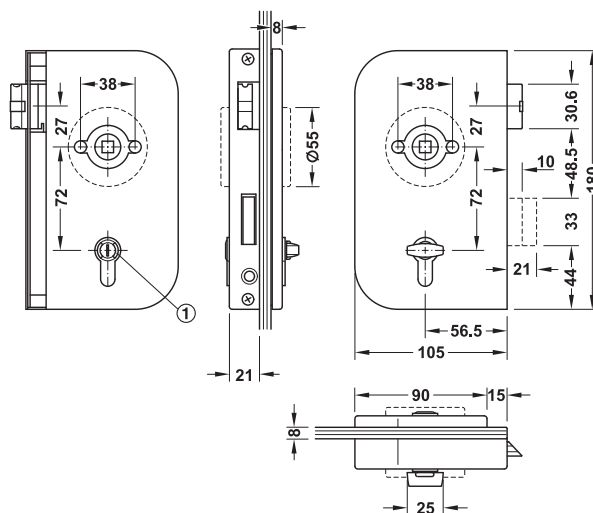
Striking plates	► AH 8.35
Lever handle pairs	► AH 8.37
Glass preparation details	► AH 8.24

→ WC/bathroom lock



① With vacant/occupied indicator and emergency opening

WC/bathroom lock, for lever handles without handle roses



① With vacant/occupied indicator and emergency opening

WC/bathroom lock, for lever handles with handle roses

- > Version: With lock indicator vacant/engaged, with emergency opening option, for inward opening door
- > Deadbolt: 1-turn
- > Distance: 72 mm

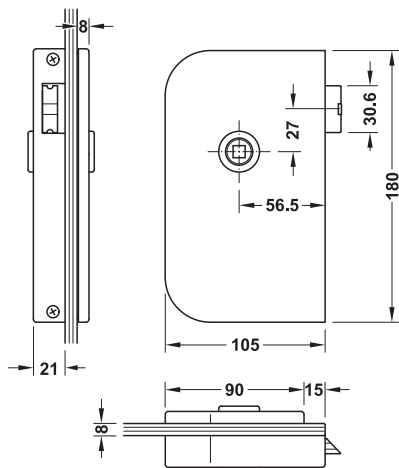
Supplied with

1 patch lock with covers
Fixing material
Installation instructions

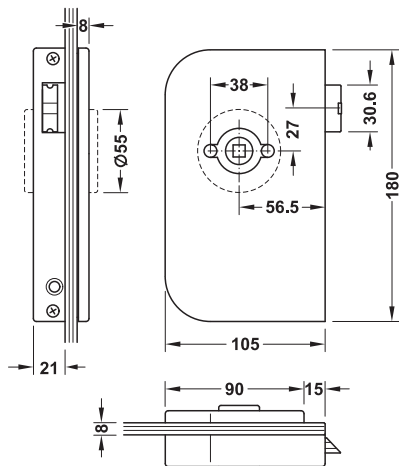
Material	Finish	DIN left	DIN right
For lever handles without handle roses			
Stainless steel	Satin	981.49.146	981.49.156
For lever handles with handle roses			
Stainless steel	Satin	981.49.166	981.49.176

Striking plates	► AH 8.35
Lever handle pairs	► AH 8.37
Glass preparation details	► AH 8.24

→ NL lock



Not lockable (NL), for lever handles without handle roses



Not lockable (NL), for lever handles with handle roses

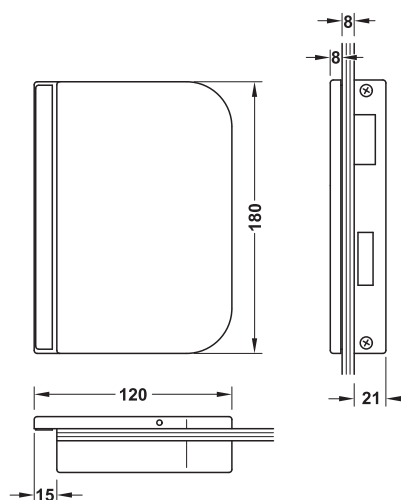
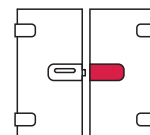
Supplied with

1 patch lock with covers
Fixing material
Installation instructions

Material	Finish	DIN left	DIN right
For lever handles without handle roses			
Stainless steel	Satin	981.49.144	981.49.154
Aluminium	Silver coloured anodized	981.49.145	981.49.155
For lever handles with handle roses			
Stainless steel	Satin	981.49.164	981.49.174
Aluminium	Silver coloured anodized	981.49.165	981.49.175

Lever handle pairs	► AH 8.37
Striking plates	► AH 8.35
Glass preparation details	► AH 8.24

→ Strike patch



- > Area of application: For double doors made of tempered safety glass
- > For glass thickness: 8 mm
- > Material: Covers for strike patch: Stainless steel or aluminium
- > Version: 2-piece, with stop, protrudes the glass edge
- > Mounting: For DIN left and DIN right hand use

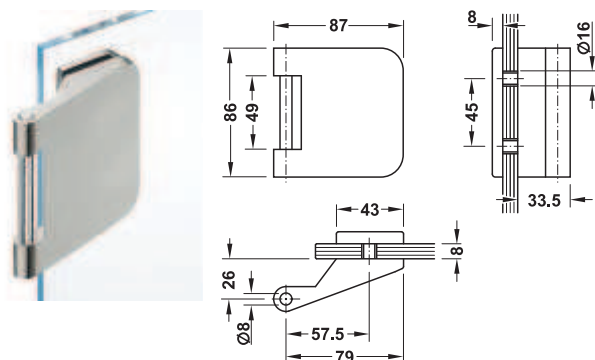
Supplied with

1 strike patch with covers
Fixing material
Installation instructions

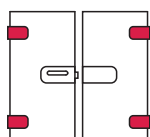
Finish	DIN left	DIN right
Stainless steel covers		
Satin	981.49.460	981.49.470
Aluminium covers		
Silver coloured anodized	981.49.461	981.49.471

Glass preparation details	► AH 8.24
---------------------------	-----------

→ 3-Piece hinge (wing part)



Stainless steel cover



- > Area of application: For wooden or steel frames
- > For glass thickness: 8 mm
- > Door weight: ≤55 kg
- > Knuckle Ø: 16.4 mm

Supplied with

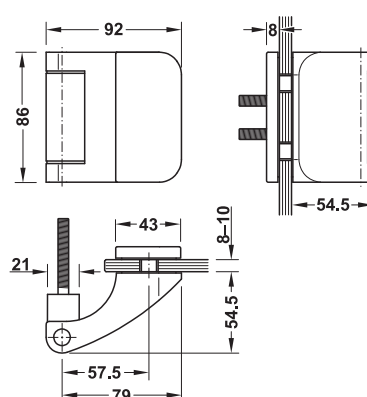
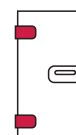
2 door hinges (wing part)
2 decorative sleeves (for frame parts with knuckle Ø15 mm)
Fixing material
Installation instructions

Material	Finish	Cat. No.
Stainless steel	Satin	981.49.007

Frame parts ► AH 8.35

Glass preparation details ► AH 8.24

→ 3-Piece hinge



- > Self closing at opening angles of 0–65°



- > Area of application: For wooden frames
- > For glass thickness: 8–10 mm
- > Door weight: ≤55 kg
- > Mounting: For DIN left and DIN right hand use
- > Door width: <960 mm
- > Door height: <2,100 mm

Supplied with

2 door hinges with frame parts

Note

We recommend using a door stop as opening angle restraint at an opening angle of 90°.

Material	Finish	Mounting	Cat. No.
Stainless steel	Satin	DIN left	981.49.031
		DIN right	981.49.032

Packing: 1 pair

GHP 203 Sets with 3-piece hinges



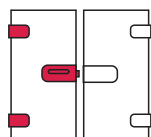
PC set example (with Hoppe Amsterdam E1400 aperture parts, not supplied)

- > Area of application: For doors made of tempered safety glass
- > For glass thickness: 8 mm
- > Material: Covers for lock and strike patch: Stainless steel
- > Door weight: ≤55 kg
- > Mounting: For DIN left and DIN right hand use

Note

Please refer to the individual components for more detailed information about technical features.

→ GHP 203 Set With 3-piece hinges



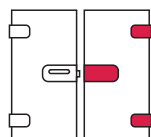
- > Area of application: For single doors

Supplied with

1 patch lock with covers
2 door hinges (2 wing parts, 2 decorative sleeves)
1 key (with lock type CB)
Fixing material
Installation instructions

Type of locking	Material	Finish	DIN left	DIN right
For lever handles without handle roses				
CB	Stainless steel	Satin	981.49.266	981.49.267
PC	Stainless steel	Satin	981.49.270	981.49.271
WC/ bathroom	Stainless steel	Satin	981.49.274	981.49.275
NL	Stainless steel	Satin	981.49.262	981.49.263
For lever handles with handle roses				
CB	Stainless steel	Satin	981.49.268	981.49.269
PC	Stainless steel	Satin	981.49.272	981.49.273
WC/ bathroom	Stainless steel	Satin	981.49.276	981.49.277
NL	Stainless steel	Satin	981.49.264	981.49.265

→ GHP 203 Strike patch set With 3-piece hinges



- > Area of application: For double doors

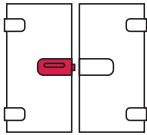
Supplied with

1 strike patch with covers
2 door hinges (2 wing parts, 2 decorative sleeves)
Fixing material
Installation instructions

Finish	DIN left	DIN right
Stainless steel covers		
Satin	981.49.618	981.49.619

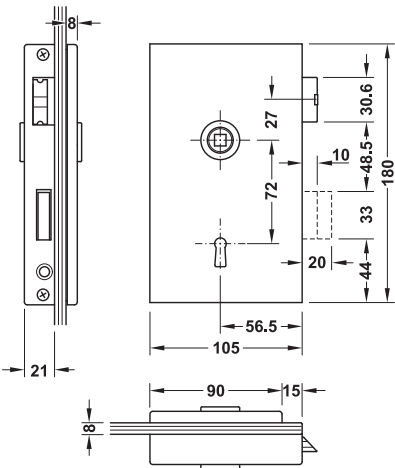
Lever handle pairs	► AH 8.37
Frame parts	► AH 8.35
Profile cylinder	► AH 8.36
Glass preparation details	► AH 8.24

GHP 203 Individual components
Patch lock

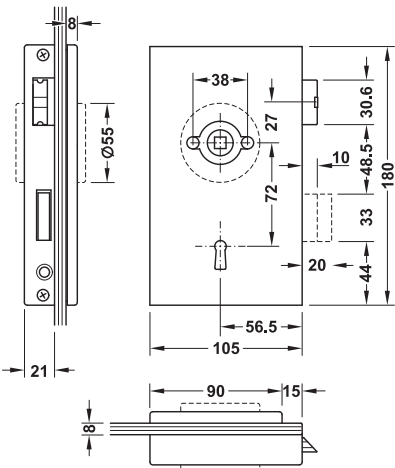


- > Area of application: For doors made of tempered safety glass
- > For glass thickness: 8 mm
- > Material: Covers: Stainless steel
- > Version: Continuous visible glass edge within the lock area, 2-piece, in compliance with DIN 18251, grade 3, lever follower: Clamping follower, for lever handles without handle roses or for lever handles with handle roses (optional)
- > Lever follower: 8 mm
- > Backset: 56.5 mm
- > Mounting: For DIN left and DIN right hand use

→ CB lock



Cipher bit lock (CB), for lever handles without handle roses



Cipher bit lock (CB), for lever handles with handle roses

- > Version: With key action
- > Deadbolt: 2-turn
- > Distance: 72 mm

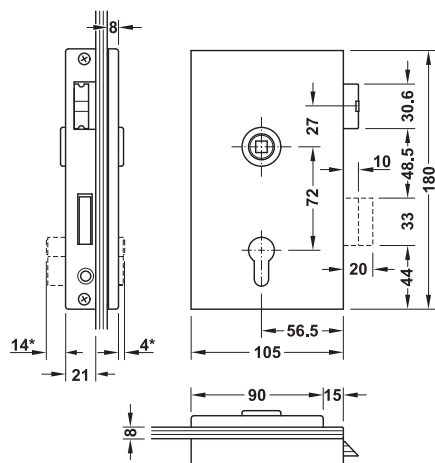
Supplied with
1 patch lock with covers
1 key
Fixing material
Installation instructions

Material	Finish	DIN left	DIN right
For lever handles without handle roses			
Stainless steel	Satin	981.49.102	981.49.112
For lever handles with handle roses			
Stainless steel	Satin	981.49.122	981.49.132

Lever handle pairs	► AH 8.37
Striking plates	► AH 8.35
Glass preparation details	► AH 8.24

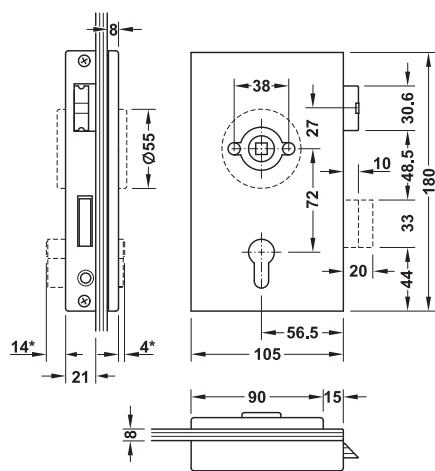
DGH-B-INT 2019, HDE-en, 12/18; Dimensional data not binding. We reserve the right to alter specifications without notice.

→ PC lock



* Euro PC 21.7 mm/26.7 mm

For profile cylinder (PC), for lever handles without handle roses



* Euro PC 21.7 mm/26.7 mm

For profile cylinder (PC), for lever handles with handle roses

- > Version: With key action
- > Deadbolt: 2-turn
- > Distance: 72 mm

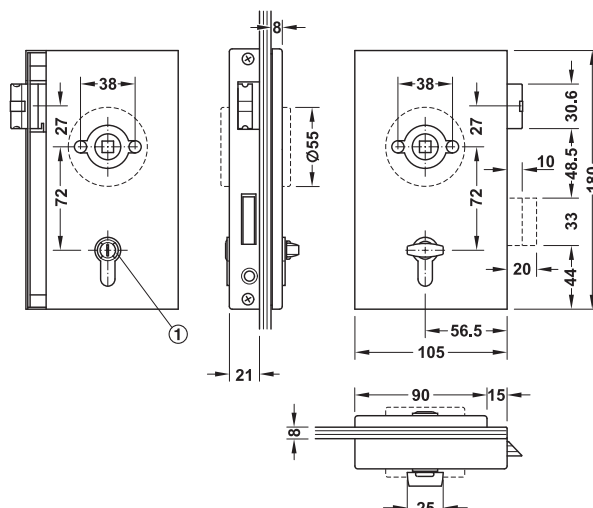
Supplied with

1 patch lock with covers
Fixing material
Installation instructions

Material	Finish	DIN left	DIN right
For lever handles without handle roses			
Stainless steel	Satin	981.49.100	981.49.110
For lever handles with handle roses			
Stainless steel	Satin	981.49.120	981.49.130

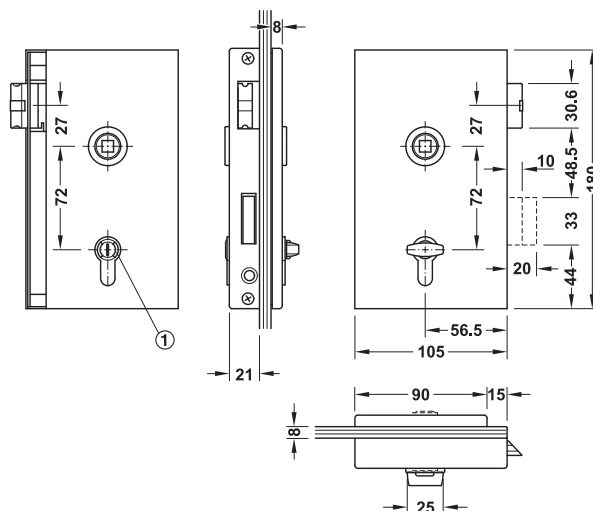
Lever handle pairs	► AH 8.37
Profile cylinder	► AH 8.36
Glass preparation details	► AH 8.24

→ WC/bathroom lock



① With vacant/occupied indicator and emergency opening

WC/bathroom lock, for lever handles with handle roses



① With vacant/occupied indicator and emergency opening

WC/bathroom lock, for lever handles without handle roses

- > Version: With lock indicator vacant/engaged, with emergency opening option, for inward opening doors
- > Deadbolt: 1-turn
- > Distance: 72 mm

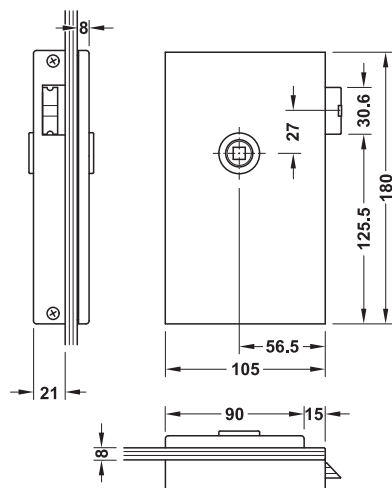
Supplied with

1 patch lock with covers
Fixing material
Installation instructions

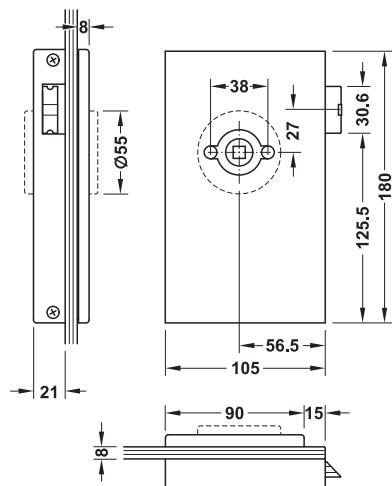
Material	Finish	DIN left	DIN right
For lever handles without handle roses			
Stainless steel	Satin	981.49.106	981.49.116
For lever handles with handle roses			
Stainless steel	Satin	981.49.126	981.49.136

Lever handle pairs	► AH 8.37
Striking plates	► AH 8.36
Glass preparation details	► AH 8.24

→ NL lock



Not lockable (NL), for lever handles without handle roses



Not lockable (NL), for lever handles with handle roses

- > Version: Top lever handle
- > Distance: 72 mm

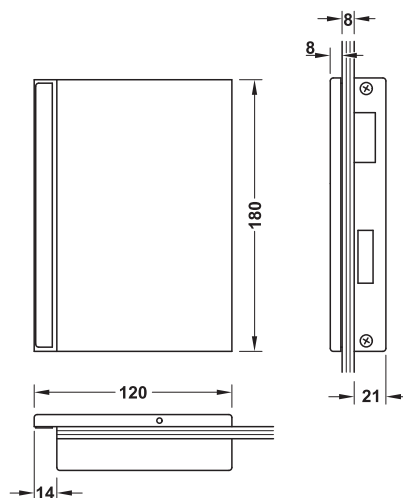
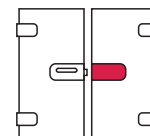
Supplied with

1 patch lock with covers
Fixing material
Installation instructions

Material	Finish	DIN left	DIN right
For lever handles without handle roses			
Stainless steel	Satin	981.49.104	981.49.114
For lever handles with handle roses			
Stainless steel	Satin	981.49.124	981.49.134

Lever handle pairs	► AH 8.37
Striking plates	► AH 8.36
Glass preparation details	► AH 8.24

→ Strike patch



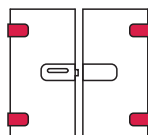
- > Area of application: For double doors made of tempered safety glass
- > For glass thickness: 8 mm
- > Material: Covers for strike patch: Stainless steel
- > Version: 2-piece, with stop, protrudes the glass edge
- > Mounting: For DIN left and DIN right hand use

Supplied with

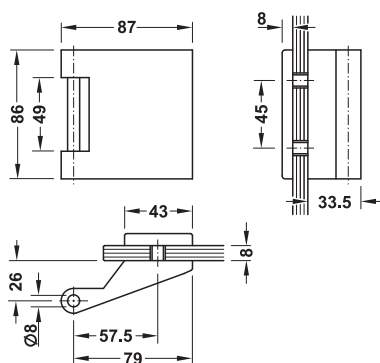
1 strike patch with covers
Fixing material
Installation instructions

Material	Finish	DIN left	DIN right
Stainless steel	Satin	981.49.480	981.49.490

→ 3-Piece hinge (wing part)



Stainless steel cover



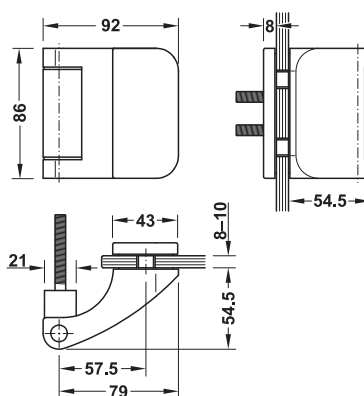
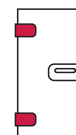
- > Area of application: For wooden or steel frames
- > For glass thickness: 8 mm
- > Door weight: ≤55 kg
- > Knuckle Ø: 16.4 mm

Supplied with

2 door hinges (wing part)
2 decorative sleeves (for frame parts with knuckle Ø 15 mm)
Fixing material
Installation instructions

Material	Finish	Cat. No.
Stainless steel	Satin	981.49.017

→ 3-Piece hinge



- > Self closing at opening angles of 0–65°



- > Area of application: For wooden frames
- > For glass thickness: 8–10 mm
- > Door weight: ≤55 kg
- > Mounting: For DIN left and DIN right hand use
- > Door width: <960 mm
- > Door height: <2,100 mm

Supplied with

2 door hinges with frame parts

Note

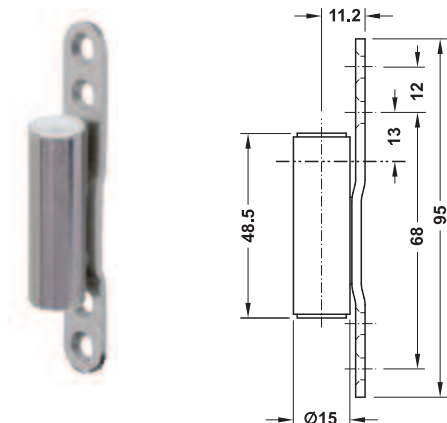
We recommend using a door stop as opening angle restraint at an opening angle of 90°.

Material	Finish	Mounting	Cat. No.
Stainless steel	Satin	DIN left	981.49.031
		DIN right	981.49.032

Packing: 1 pair

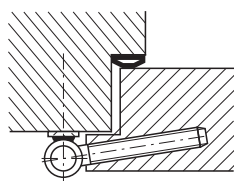
Frame parts	► AH 8.35
Glass preparation details	► AH 8.24

V 8000 WF ASR Frame part

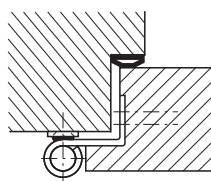


- > Area of application: For wooden frames, for retrofitting to rebated and flush interior doors
- > Bearing: Maintenance-free friction bearing technology
- > Door weight: With wing part V 0026 WF ≤70 kg, with wing part V 0037 WF ≤80 kg, with wing part V 0087 WF ≤70 kg
- > Knuckle Ø: 15 mm
- > Mounting: For DIN left and DIN right hand use

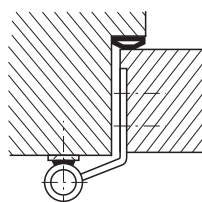
Installation



With V 0026 WF wing part on rebated doors



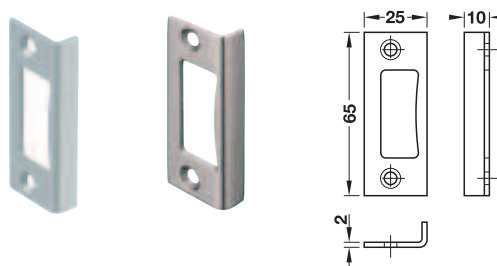
With V 0037 WF wing part on rebated doors



With V 0087 WF wing part on flush doors

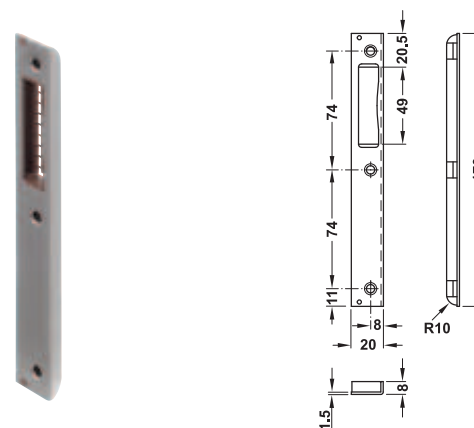
Material	Finish	Cat. No.
Steel	Nickel plated	922.05.670

Angled striking plate



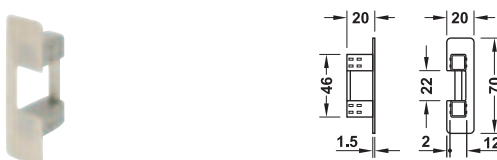
Material	Finish	Cat. No.
Aluminium	Silver coloured anodized	981.27.636
	Stainless steel coloured	981.27.637

Recessed striking plate



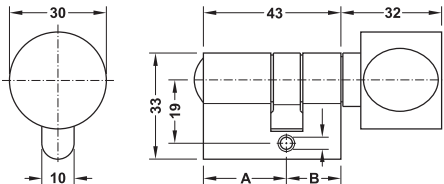
Material	Finish	DIN left	DIN right
Steel	Matt nickel plated	911.39.285	911.39.286

Magnetic insert



Suitable for	Cat. No.
GHR 112/113 and GHR 412/413	981.49.901

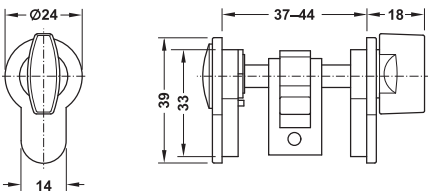
WC thumbturn cylinder



- > Area of application: For PC glass door locks
- > Material: Brass
- > Finish: Matt nickel plated
- > Version: Emergency opening function (slot) on the outside

Version	Dim. A mm	Dim. B mm	Cat. No.
Thumbturn on the lock side	26	17	981.49.300
Thumbturn on the opposite side of the lock	17	26	981.49.301

WC thumbturn cylinder



- > Area of application: For Startec PC glass door locks
- > Material: Zinc alloy
- > Finish: Stainless steel coloured
- > For glass thickness: 8 mm

Supplied with
1 WC thumbturn cylinder
1 forend screw

Version	Suitable for	Cat. No.
With forend screw M5 x 35 mm	Residential areas	981.65.000
With forend screw M5 x 80 mm	Projects	981.65.001

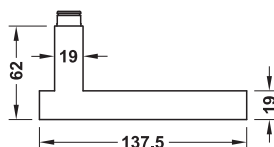
Lever handle pairs

- > Area of application: For Startec and Dorma Glas glass door fittings for residential areas
- > For door thickness: 38–42 mm
- > Supplied with: 1 pair of lever handles

Order reference

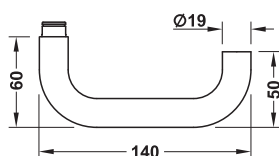
A lever handle guide ring is required for use in combination with Dorma Glas glass door fittings. Please order separately.

→ LDH 2167



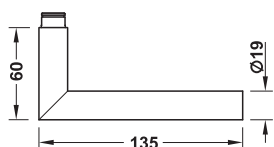
Material	Finish	Cat. No.
Stainless steel	Satin	902.22.900
	Polished	902.22.901

→ LDH 2170



Material	Finish	Cat. No.
Stainless steel	Satin	902.22.760
	Polished	902.22.761
	Polished brass coloured PVD coated	902.22.764

→ LDH 2171



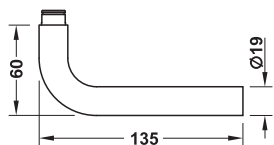
Material	Finish	Cat. No.
Stainless steel	Satin	902.22.930
	Polished	902.22.931
	Polished brass coloured PVD coated	902.22.934

→ LDH 2171 Bicolor



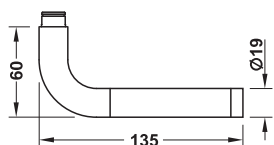
Material	Finish	Cat. No.
Stainless steel	Satin/polished	902.22.933
	Satin/polished brass coloured, PVD coated	902.22.939

→ LDH 2172



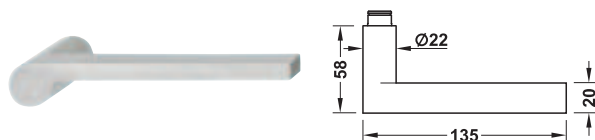
Material	Finish	Cat. No.
Stainless steel	Satin	902.22.770
	Polished	902.22.771
	Polished brass coloured PVD coated	902.22.774

→ LDH 2172 Bicolor



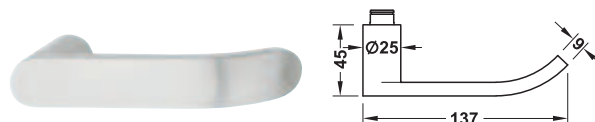
Material	Finish	Cat. No.
Stainless steel	Satin/polished	902.22.773
	Satin/polished brass coloured, PVD coated	902.22.779

→ LDH 2174



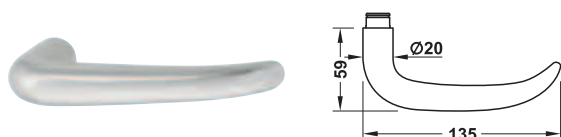
Material	Finish	Cat. No.
Stainless steel	Satin	902.22.910
	Polished	902.22.911

→ LDH 2175



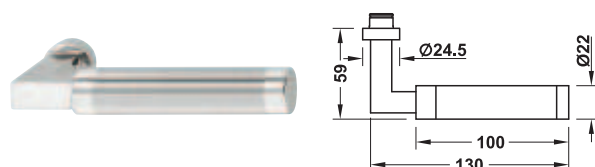
Material	Finish	Cat. No.
Stainless steel	Satin	902.22.830
	Polished	902.22.831

→ LDH 2176



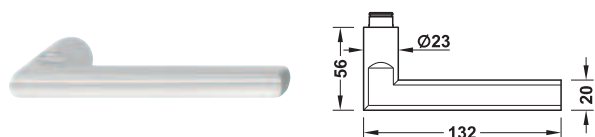
Material	Finish	Cat. No.
Stainless steel	Satin	902.22.800
	Polished	902.22.801

→ LDH 2180 Bicolor



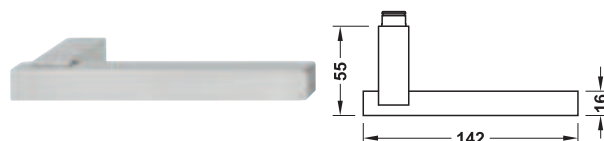
Material	Finish	Cat. No.
Stainless steel	Satin	902.22.920
	Satin/polished	902.22.923

→ LDH 2181



Material	Finish	Cat. No.
Stainless steel	Polished	902.22.891

→ LDH 2186



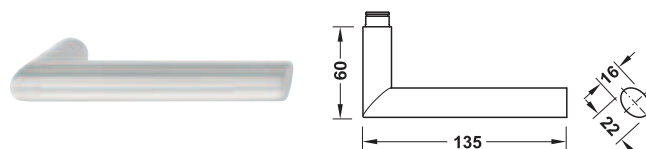
Material	Finish	Cat. No.
Stainless steel	Satin	902.22.780
	Polished	902.22.781

→ LDH 2187



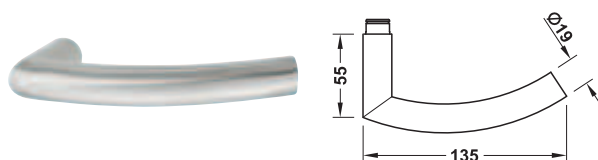
Material	Finish	Cat. No.
Stainless steel	Satin	902.22.790
	Polished	902.22.791

→ LDH 2188



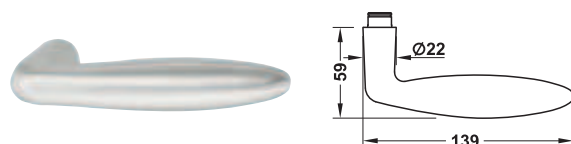
Material	Finish	Cat. No.
Stainless steel	Satin	902.22.810
	Polished	902.22.811

→ LDH 2189



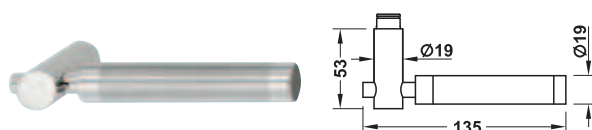
Material	Finish	Cat. No.
Stainless steel	Satin	902.22.820
	Polished	902.22.821

→ LDH 2190



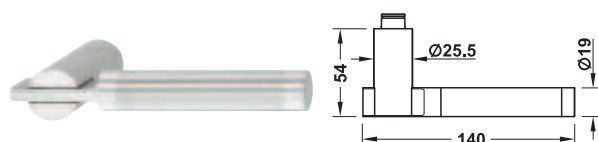
Material	Finish	Cat. No.
Stainless steel	Satin	902.22.840
	Polished	902.22.841
	Polished brass coloured	902.22.844
	PVD coated	

→ LDH 2191 Bicolor



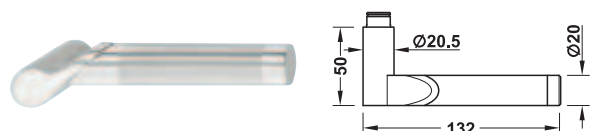
Material	Finish	Cat. No.
Stainless steel	Satin/polished	902.22.853

→ LDH 2194 Bicolor



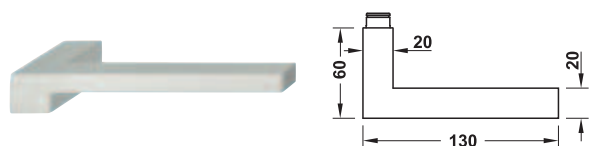
Material	Finish	Cat. No.
Stainless steel	Satin/polished	902.22.863

→ LDH 2195 Bicolor



Material	Finish	Cat. No.
Stainless steel	Satin/polished	902.22.873

→ LDH 2196



Material	Finish	Cat. No.
Stainless steel	Satin	902.22.880

Order reference

A lever handle guide ring is required for use in combination with Dorma Glas glass door fittings. Please order separately.

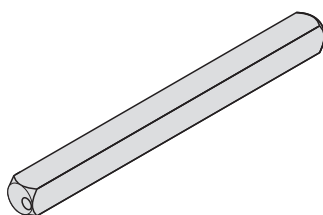
→ Dorma Glas Lever handle guide ring for Startec lever handle pairs



Material	Internal Ø mm	Cat. No.
Plastic	16	981.27.905

Packing: 1 set

Spindle 8 mm



Note

Required spindle length:

	Model	Glass thickness		
		8 mm	10 mm	12 mm
Residential areas	102	105	105	110
	103	105	105	110
	202	105	105	110
	203	105	105	110
	303	100	100	105
Projects	403	100	100	105
	503	100	100	105

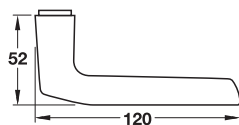
> Area of application:	Residential areas, projects
> Material:	Steel
> Finish:	Galvanized
> Dim. (W x H):	8 x 8 mm

Length mm	Cat. No.
100	909.46.028
105	909.46.030
110	909.46.031

Lever handle aperture parts

> Area of application: For Startec and Dorma Glas glass door fittings for projects and residential areas

→ Model A91.12 TW



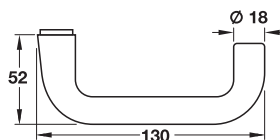
Material	Finish	Cat. No.
Aluminium	Silver coloured anodized	904.30.521

→ Model A91.31 TW



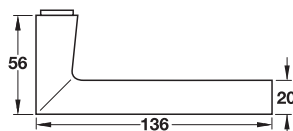
Material	Finish	Cat. No.
Aluminium	Silver coloured anodized	904.30.531

→ Model A91.34 TW



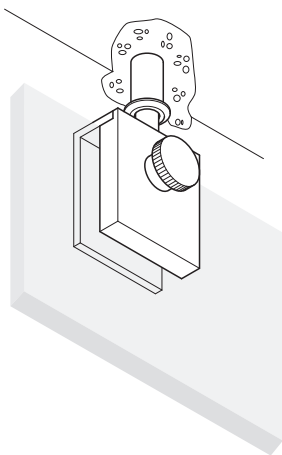
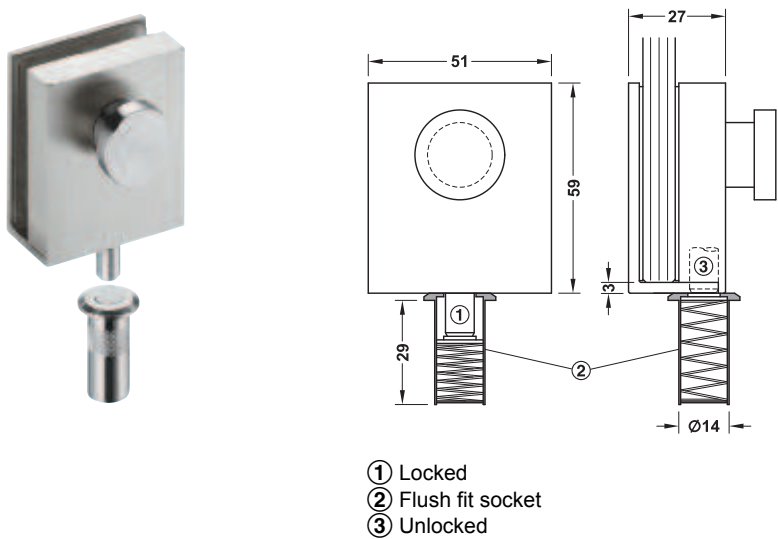
Material	Finish	Cat. No.
Aluminium	Silver coloured anodized	904.30.511

→ Model A91.38 TW



Material	Finish	Cat. No.
Aluminium	Silver coloured anodized	904.30.541

Slide-on door bolt

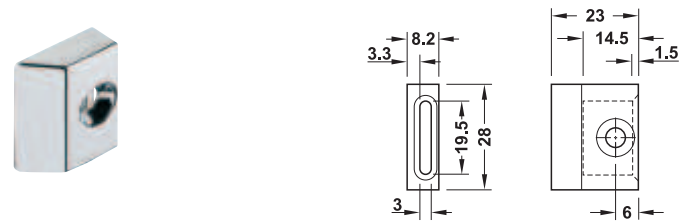


- > Area of application: For double doors made of tempered safety glass, for holding the inactive leaf
- > For glass thickness: 8–10 mm
- > Installation: No glass preparation required, loosen screws, slide door bolt on glass door, tighten screws, flush fit socket in floor or ceiling

Supplied with
1 door bolt with gaskets
1 flush fit socket

Material	Finish	Cat. No.
Stainless steel	Satin	981.49.910
	Silver coloured	981.49.911

Replacement latchbolt for 10 mm glass

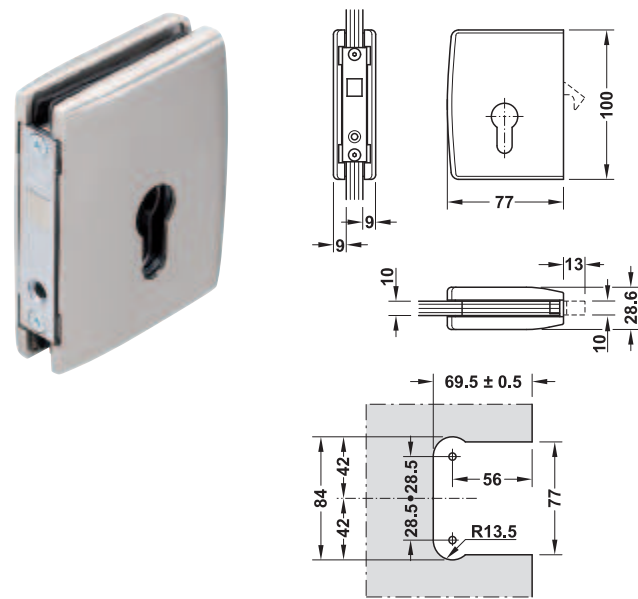


- > Area of application: For Startec glass door locks for residential areas
- > For glass thickness: 10 mm
- > Installation: Replace standard pad of glass door lock (lock side) with supplied rubber pad

Supplied with
1 special latchbolt
1 rubber pad

Material	Finish	Cat. No.
Steel	Polished chrome plated	981.49.590

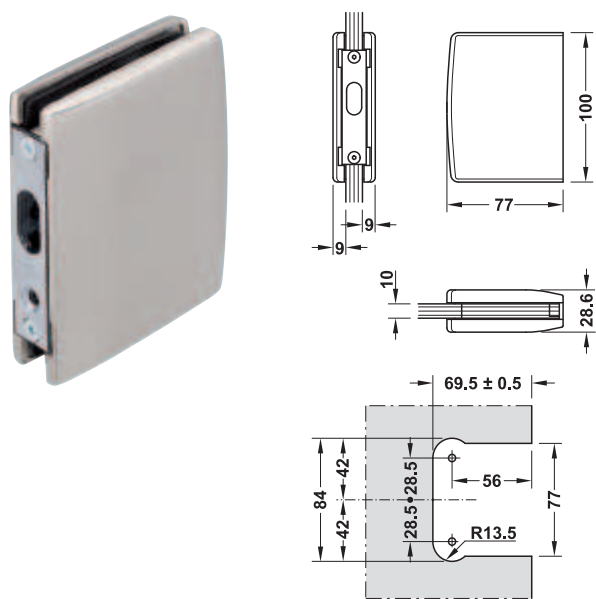
Sliding door lock



- > Area of application: For sliding doors made of tempered safety glass or laminated glass
- > For glass thickness: 8–10 mm
- > Version: With compass bolt
- > Material: Brass

Finish	Cat. No.
Matt chrome plated	940.78.104
Matt nickel plated	940.78.106

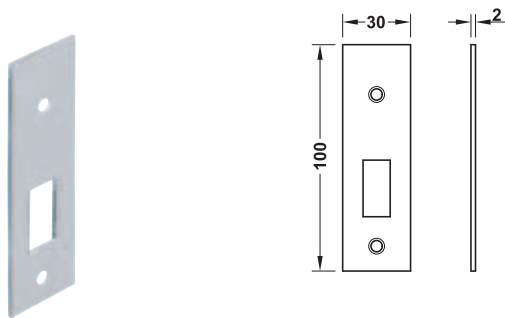
Strike patch



- > Area of application: For sliding doors made of tempered safety glass or laminated glass, for sliding door lock with compass bolt
- > Material: Brass

Finish	Cat. No.
Matt chrome plated	940.78.114
Matt nickel plated	940.78.116

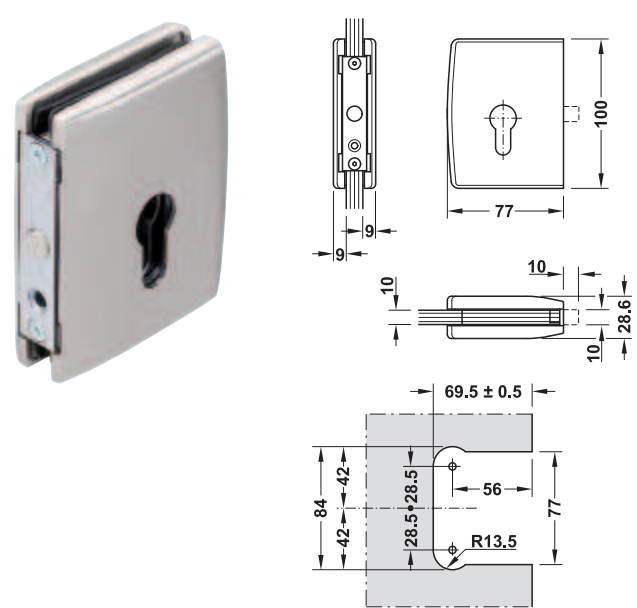
Flat striking plate



- > Area of application: For sliding door lock with compass bolt
- > Material: Brass

Finish	Cat. No.
Matt chrome plated	940.78.124
Matt nickel plated	940.78.126

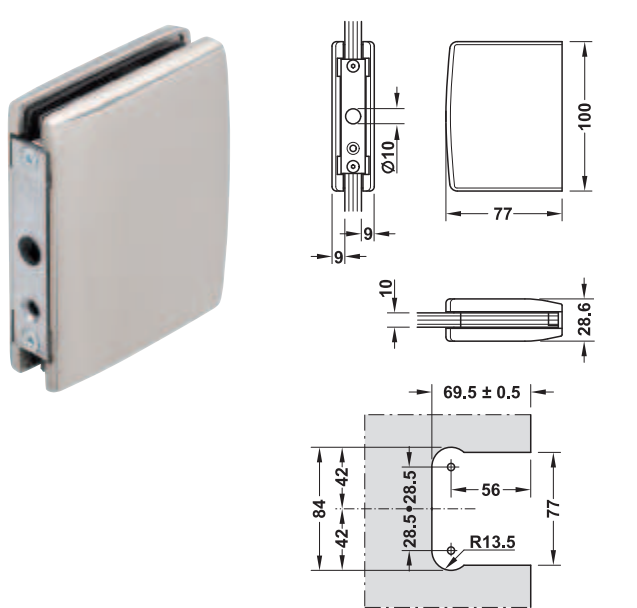
Deadbolt lock



- > Area of application: For sliding doors made of tempered safety glass or laminated glass
- > For glass thickness: 8–10 mm
- > Version: With round bolt
- > Material: Brass

Finish	Cat. No.
Matt chrome plated	981.14.074
Matt nickel plated	981.14.076

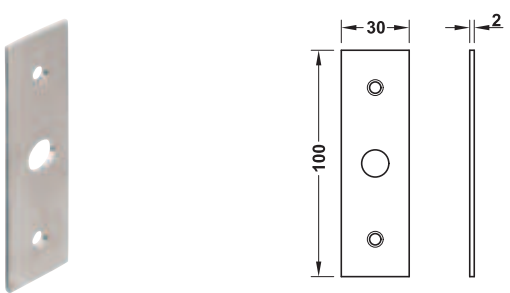
Deadbolt lock strike patch



- > Area of application: For sliding doors made of tempered safety glass or laminated glass, for sliding door lock with round bolt
- > Material: Brass

Finish	Cat. No.
Matt chrome plated	981.14.084
Matt nickel plated	981.14.086

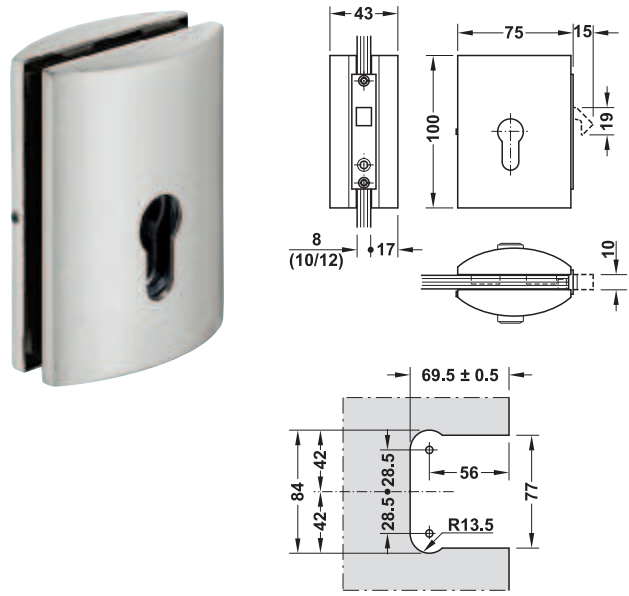
Flat striking plate



- > Area of application: For sliding door lock with round bolt
- > Material: Aluminium

Finish	Cat. No.
Matt chrome plated	981.14.134
Matt nickel plated	981.14.136

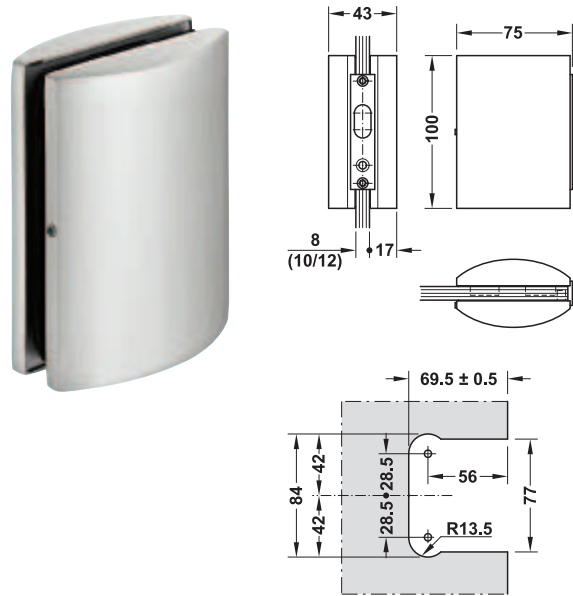
Sliding door lock



- > Area of application: For sliding doors made of tempered safety glass or laminated glass
- > Version: With compass bolt
- > Material: Brass

Finish	Cat. No.
Matt chrome plated	981.14.734
Matt nickel plated	981.14.736

Strike patch

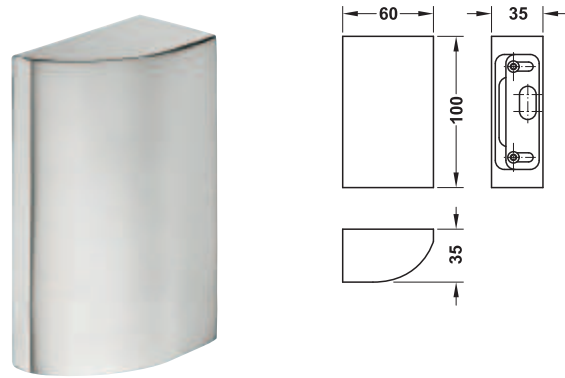


- > Area of application: For 2-leaf glass sliding doors, for sliding doors made of tempered safety glass or laminated glass
- > Material: Brass

Finish	Cat. No.
Matt chrome plated	981.14.744
Matt nickel plated	981.14.746

DGH-B-INT 2019, HDE-en, 12/18; Dimensional data not binding. We reserve the right to alter specifications without notice.

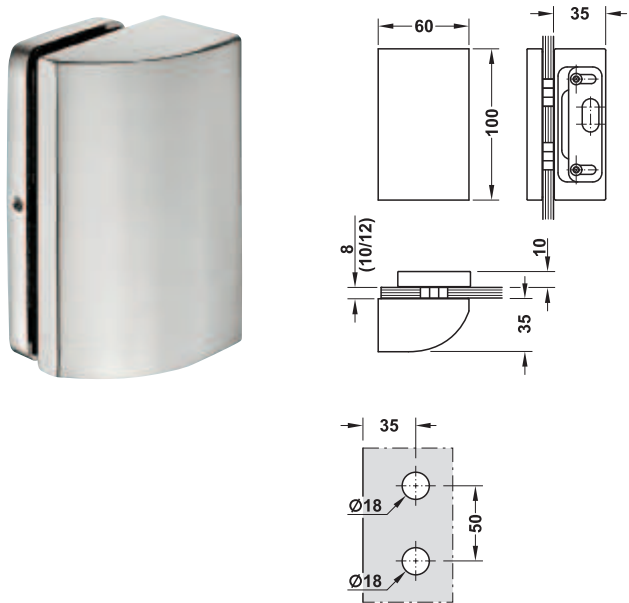
Strike patch



- > Area of application: For 1-leaf glass sliding doors with wall connection
- > Material: Brass

Finish	Cat. No.
Matt chrome plated	981.14.754
Matt nickel plated	981.14.756

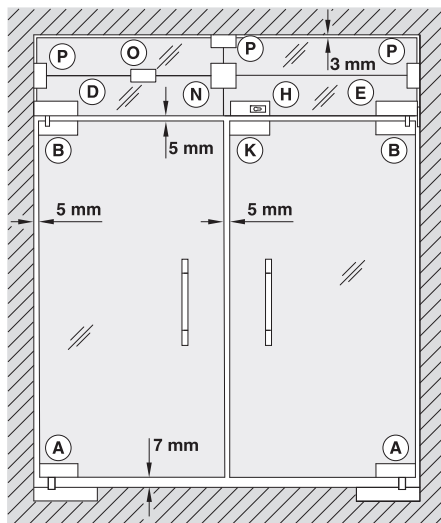
Strike patch



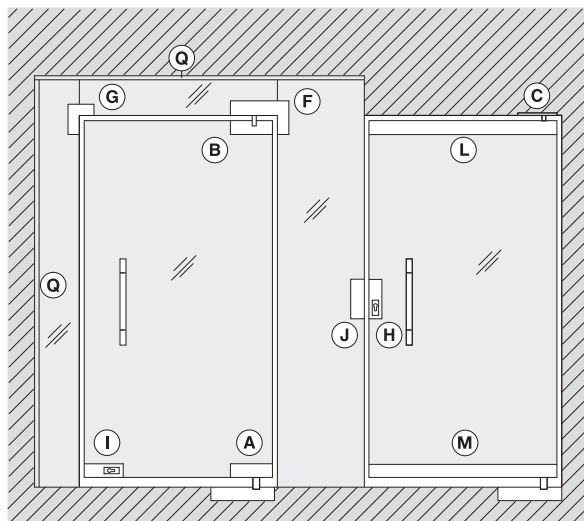
- > Area of application: For 1-leaf glass sliding doors with glass to wall connection, for tempered safety glass or laminated glass
- > Material: Brass

Finish	Cat. No.
Matt chrome plated	981.14.764
Matt nickel plated	981.14.766

System overview



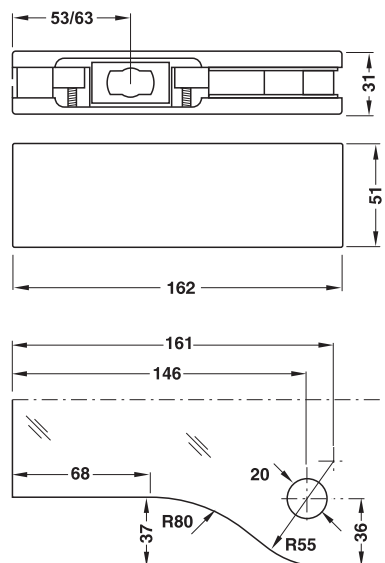
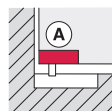
Double door design



Single door design

- A** Bottom patch fitting for double action door
- B** Top patch fitting for double action door
- C** Top pivot bearing
- D** Overpanel pivot patch fitting, with threaded bolt for wall mounting
- E** Overpanel pivot patch fitting, with screw-on plate for wall mounting
- F** Overpanel/side panel pivot patch fitting
- G** Overpanel/side panel connection patch fitting
- H** Patch lock, with PC aperture
- I** Corner patch lock, with PC aperture
- J** Centre strike patch for lock
- K** Overpanel strike patch for corner lock
- L** Top rail
- M** Bottom rail
- N** Glass connection patch fitting
- O** Glass to wall connection patch fitting, without thread
- P** Glass to wall connection patch fitting, with M8 thread
- Q** Wall and ceiling connection profile

Bottom patch fitting for double action doors **A**



Glass preparation details

- > For glass thickness: 10–12 mm
- > Material: Covers: Stainless steel
With insert for flat conical floor spring pivot
- > Version:
- > Load bearing capacity: ≤80 kg
- > Door width: ≤1,100 mm
- > Installation: For concealed clamp fixing with hex socket head screws
- > Mounting: For DIN left and DIN right hand use

Supplied with

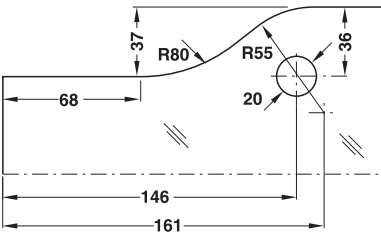
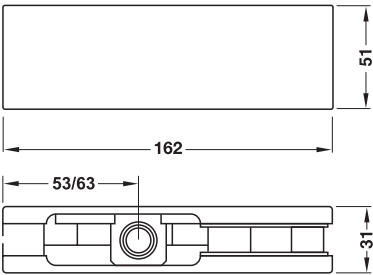
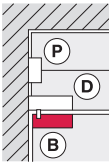
- 1 bottom patch fitting for double action doors
- 1 adapter plate for 10 mm thick glass
- 1 hex key

Finish	Cat. No.
Satin	981.00.000

Order reference

A floor spring or a pivot bearing must be ordered separately for mounting the glass door.

Top patch fitting
for double action doors (B)



Glass preparation details

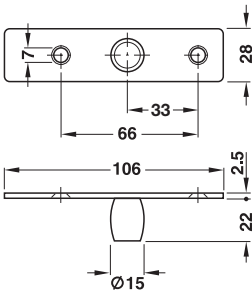
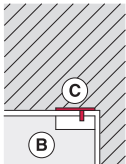
- > For glass thickness: 10–12 mm
- > Material: Covers: Stainless steel
- > Version: With plastic pivot insert for bolt Ø 15 mm
- > Load bearing capacity: ≤80 kg
- > Door width: ≤1,100 mm
- > Installation: For concealed clamp fixing with hex socket head screws
- > Mounting: For DIN left and DIN right hand use

Supplied with

- 1 top patch fitting for double action doors
- 1 adapter plate for 10 mm thick glass
- 1 hex key

Finish	Cat. No.
Satin	981.00.010

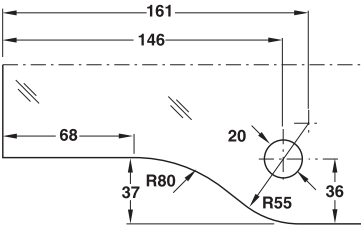
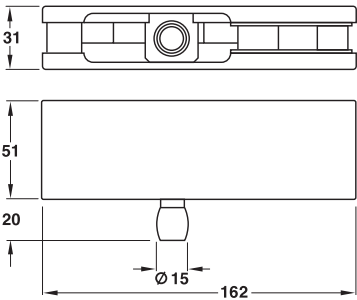
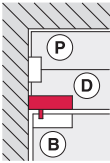
Top pivot bearing (C)



- > Area of application: Counter bearing for top patch fitting or top rail
- > Material: Stainless steel
- > Installation: For screw fixing
- > Mounting: For DIN left and DIN right hand use

Finish	Cat. No.
Satin	981.00.080

Overpanel pivot patch fitting **Ⓓ**
With threaded bolt for wall mounting



Glass preparation details

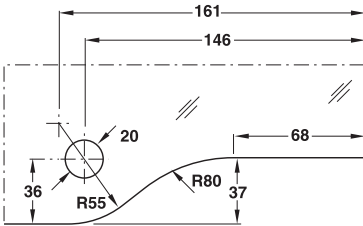
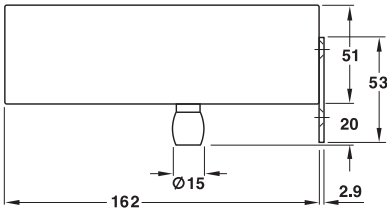
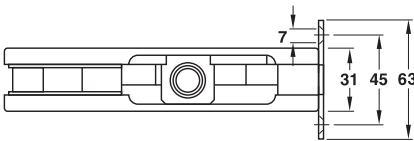
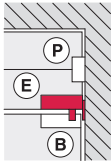
- > Area of application: Counter bearing for top patch fitting or top rail
- > For glass thickness: 10–12 mm
- > Material: Covers: Stainless steel
- > Version: M8 threaded hole at rear for wall mounting
- > Installation: For concealed clamp fixing with hex socket head screws
- > Adjustment facility: Bolt can be adjusted laterally by ± 3 mm
- > Mounting: For DIN left and DIN right hand use

Supplied with

- 1 overpanel pivot patch fitting
- 1 adapter plate for 10 mm thick glass
- 1 brass spreading dowel with M8 threaded bolt
- 1 hex key

Finish	Cat. No.
Satin	981.00.020

Overpanel pivot patch fitting **Ⓔ**
With screw-on plate for wall mounting



Glass preparation details

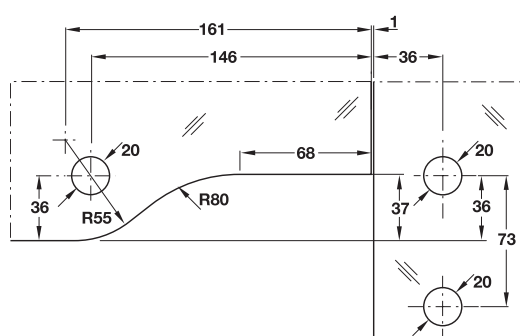
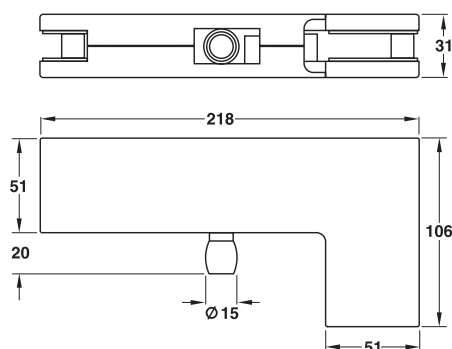
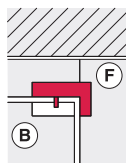
- > Area of application: Counter bearing for top patch fitting or top rail
- > For glass thickness: 10–12 mm
- > Material: Covers: Stainless steel
- > Version: Screw-on plate at rear for wall mounting
- > Installation: For concealed clamp fixing with hex socket head screws
- > Adjustment facility: Bolt can be adjusted laterally by ± 3 mm
- > Mounting: For DIN left and DIN right hand use

Supplied with

- 1 overpanel pivot patch fitting
- 1 adapter plate for 10 mm thick glass
- 1 screw-on plate
- Fixing material
- 1 hex key

Finish	Cat. No.
Satin	981.00.110

Overpanel/side panel pivot patch fitting (F)



Glass preparation details

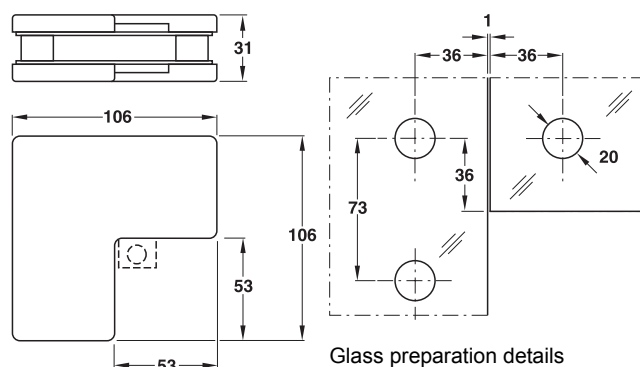
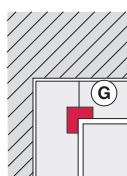
- > Area of application: Counter bearing for top patch fitting or top rail
- > For glass thickness: 10–12 mm
- > Material: Covers: Stainless steel
- > Installation: For concealed clamp fixing with hex socket head screws
- > Adjustment facility: Bolt can be adjusted laterally by ± 3 mm
- > Mounting: For DIN left and DIN right hand use

Supplied with

- 1 overpanel/side panel pivot patch fitting
- 1 adapter plate for 10 mm thick glass
- 1 hex key

Finish	Cat. No.
Satin	981.00.030

Overpanel/side panel connection patch fitting (G)



Glass preparation details

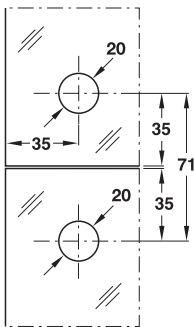
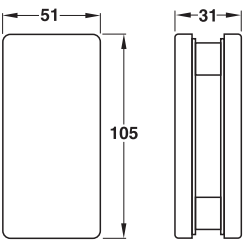
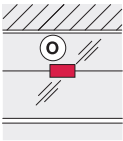
- > Area of application: For single doors
- > For glass thickness: 10–12 mm
- > Material: Covers: Stainless steel
- > Installation: For concealed clamp fixing with hex socket head screws
- > Mounting: For DIN left and DIN right hand use

Supplied with

- 1 overpanel/side panel connection patch fitting
- 1 mounting insert
- 2 dummy inserts for double action doors
- 1 adapter plate for 10 mm thick glass
- 1 hex key

Finish	Cat. No.
Satin	981.00.060

Glass to wall connection patch fitting ①
→ Without thread



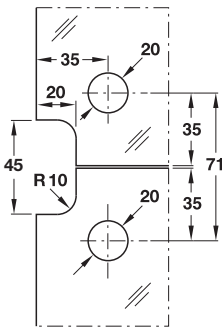
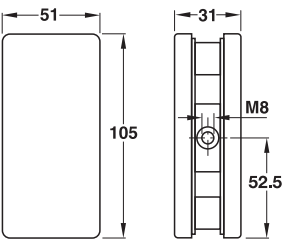
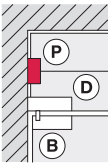
Glass preparation details

- > Area of application: For connecting 2 glass panes
- > For glass thickness: 10–12 mm
- > Material: Covers: Stainless steel
- > Installation: For concealed clamp fixing with hex socket head screws

Supplied with
1 glass to wall connection patch fitting
1 adapter plate for 10 mm thick glass
1 hex key

Finish	Cat. No.
Satin	981.00.130

→ With M8 thread



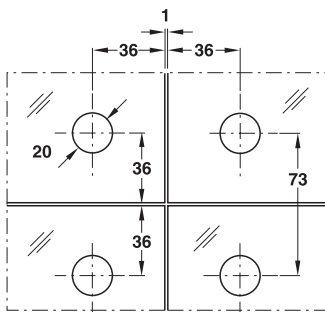
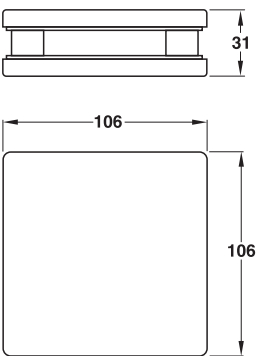
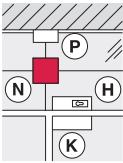
Glass preparation details

- > Area of application: For connecting 2 glass panes with wall connection
- > For glass thickness: 10–12 mm
- > Material: Covers: Stainless steel
- > Installation: For concealed clamp fixing with hex socket head screws

Supplied with
1 glass to wall connection patch fitting
1 adapter plate for 10 mm thick glass
1 brass spreading dowel with M8 threaded bolt
1 hex key

Finish	Cat. No.
Satin	981.00.140

Glass connection patch fitting (N)



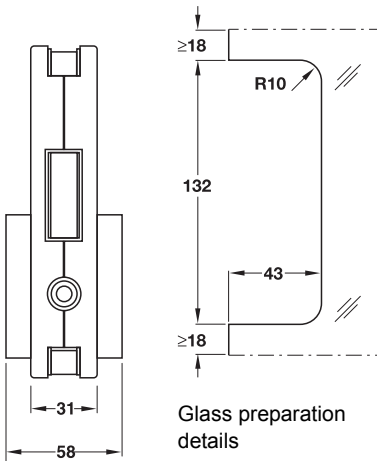
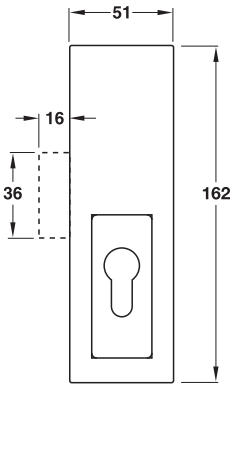
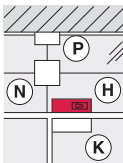
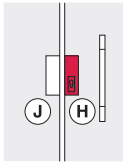
Glass preparation details,
example shows the connection
of 4 glass panes

- > Area of application: For connecting 2–4 glass panes
- > For glass thickness: 10–12 mm
- > Material: Covers: Stainless steel
- > Installation: For concealed clamp fixing with hex socket head screws

Supplied with
1 glass connection patch fitting
1 adapter plate for 10 mm thick glass
1 hex key

Finish	Cat. No.
Satin	981.00.120

Patch lock (H)
With PC aperture



Glass preparation
details

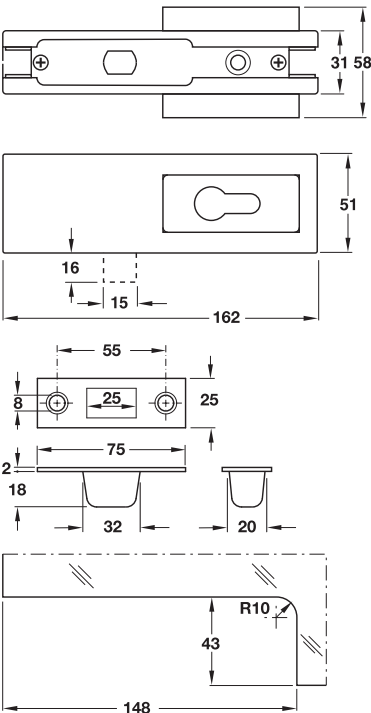
- > Area of application: For profile cylinder (31.5/31.5 mm)
- > For glass thickness: 10–12 mm
- > Material: Covers: Stainless steel
- > Deadbolt: 1-turn
- > Installation: For concealed clamp fixing with hex socket head screws
- > Mounting: For DIN left and DIN right hand use

Supplied with
1 patch lock with PC aperture
1 adapter plate for 10 mm thick glass
1 fixing screw for profile cylinder
1 hex key

Finish	Cat. No.
Satin	981.00.410

Corner patch lock ①

With PC aperture



Glass preparation details

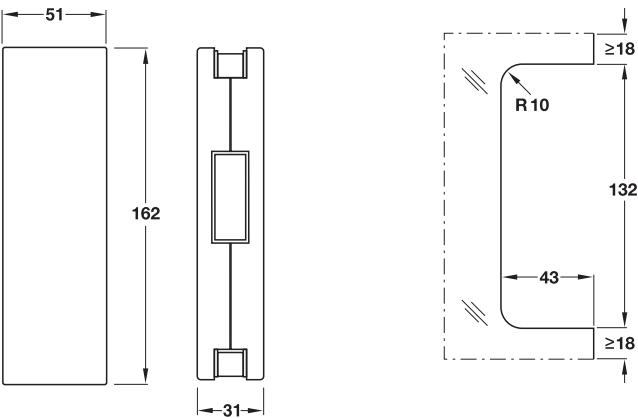
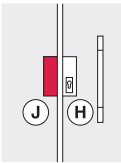
- > Area of application: For profile cylinder (31.5/31.5 mm)
- > For glass thickness: 10–12 mm
- > Material: Covers: Stainless steel
- > Deadbolt: 1-turn
- > Installation: For concealed clamp fixing with hex socket head screws
- > Mounting: For DIN left and DIN right hand use

Supplied with

- 1 corner patch lock with PC aperture
- 1 adapter plate for 10 mm thick glass
- 1 striking plate with fixing material
- 1 fixing screw for profile cylinder
- 1 hex key

Finish	Cat. No.
Satin	981.00.400

Centre strike patch for lock ②



Glass preparation details

- > For glass thickness: 10–12 mm
- > Material: Covers: Stainless steel
- > Installation: For concealed clamp fixing with hex socket head screws
- > Mounting: For DIN left and DIN right hand use

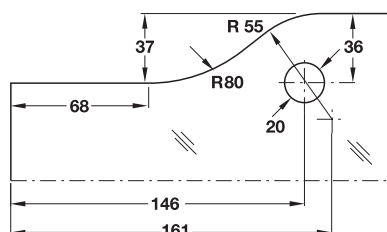
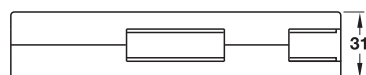
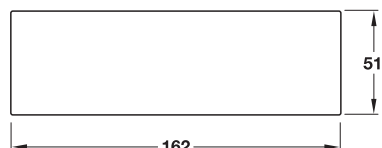
Supplied with

- 1 centre strike patch for lock
- 1 adapter plate for 10 mm thick glass
- 1 hex key

Finish	Cat. No.
Satin	981.00.420

DGH-B-INT 2019, HDE-en, 12/18; Dimensional data not binding. We reserve the right to alter specifications without notice.

Overpanel strike patch for corner lock (K)



Glass preparation details

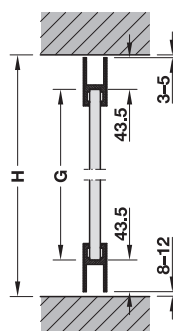
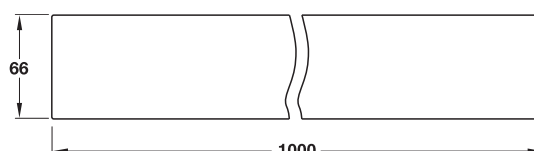
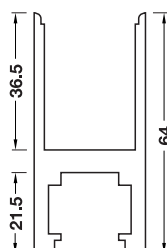
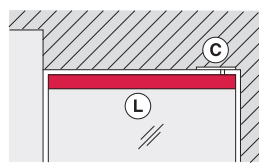
- > For glass thickness: 10–12 mm
- > Material: Covers: Stainless steel
- > Version: M8 threaded hole at rear for wall mounting
- > Installation: For concealed clamp fixing with hex socket head screws
- > Mounting: For DIN left and DIN right hand use

Supplied with

- 1 overpanel strike patch for corner lock
- 1 adapter plate for 10 mm thick glass
- 1 brass spreading dowel with M8 threaded bolt
- 1 hex key

Finish	Cat. No.
Satin	981.00.470

Top rail (L)



H = internal installation height
G = glass height

- > For glass thickness: 10–12 mm
- > Material: Covers: Stainless steel
- > Version: With plastic pivot insert for bolt Ø 15 mm
- > Load bearing capacity: ≤80 kg
- > Door width: ≤1,000 mm
- > Installation: With clip-on profiles and silicone joints
- > Adjustment facility: Riveting nut can be adjusted laterally by ±5 mm
- > Mounting: For DIN left and DIN right hand use
- > Rail can be shortened

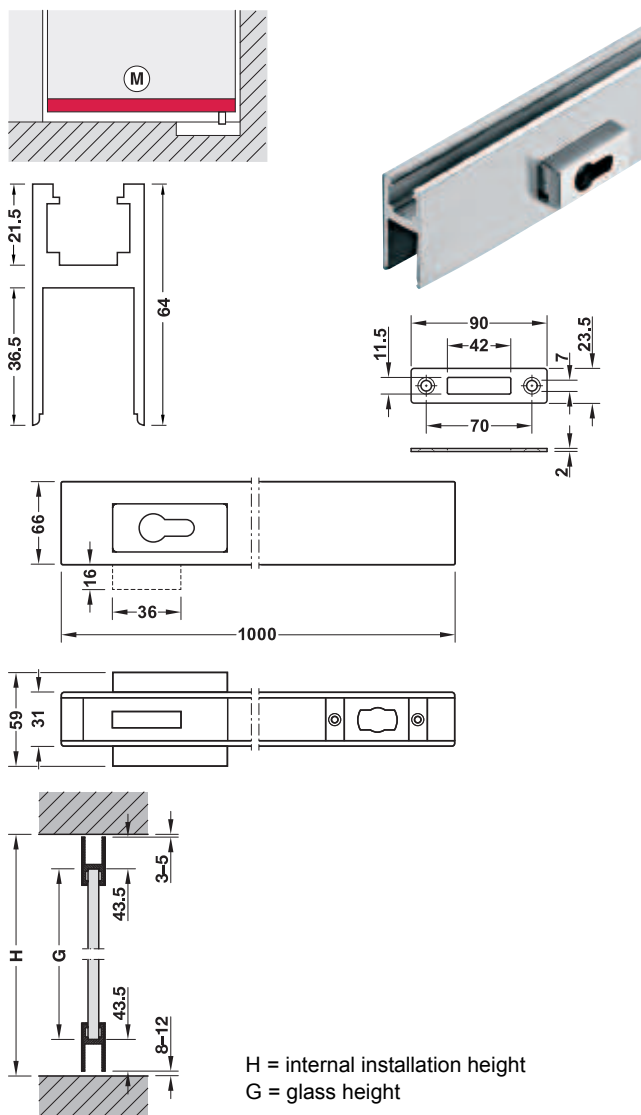
Supplied with

- 1 top rail
- 1 set of clip-on profiles for 10 and 12 mm thick glass
- 2 end caps

Finish	Cat. No.
Satin	981.00.252

Bottom rail (M)

With PC aperture



- > Area of application: For profile cylinder (31.5/31.5 mm)
- > For glass thickness: 10–12 mm
- > Material: Covers: Stainless steel
- > Version: With insert for flat conical floor spring pivot
- > Load bearing capacity: ≤80 kg
- > Door width: ≤1,000 mm
- > Deadbolt: 1-turn
- > Installation: With clip-on profiles and silicone joints
- > Mounting: For DIN left and DIN right hand use
- > Rail can be shortened

Supplied with

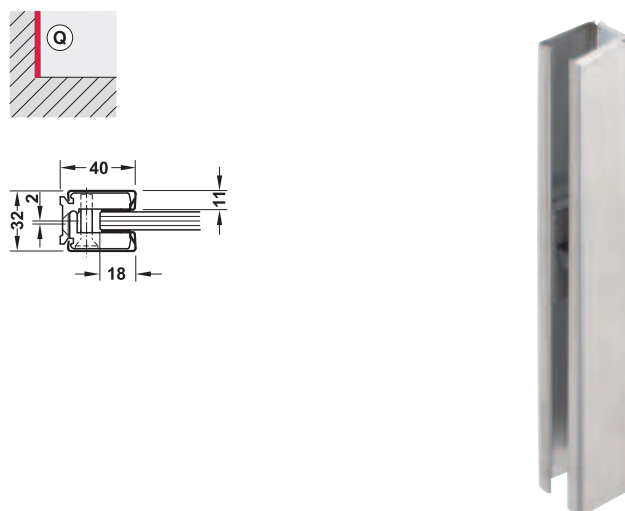
- 1 bottom rail
- 1 set of clip-on profiles for 10 and 12 mm thick glass
- 2 end caps
- 1 striking plate with fixing material
- 1 fixing screw for profile cylinder

Finish	Cat. No.
Satin	981.00.200

Order reference

A floor spring or a pivot bearing must be ordered separately for mounting the glass door.

Wall and ceiling connection profile (Q)



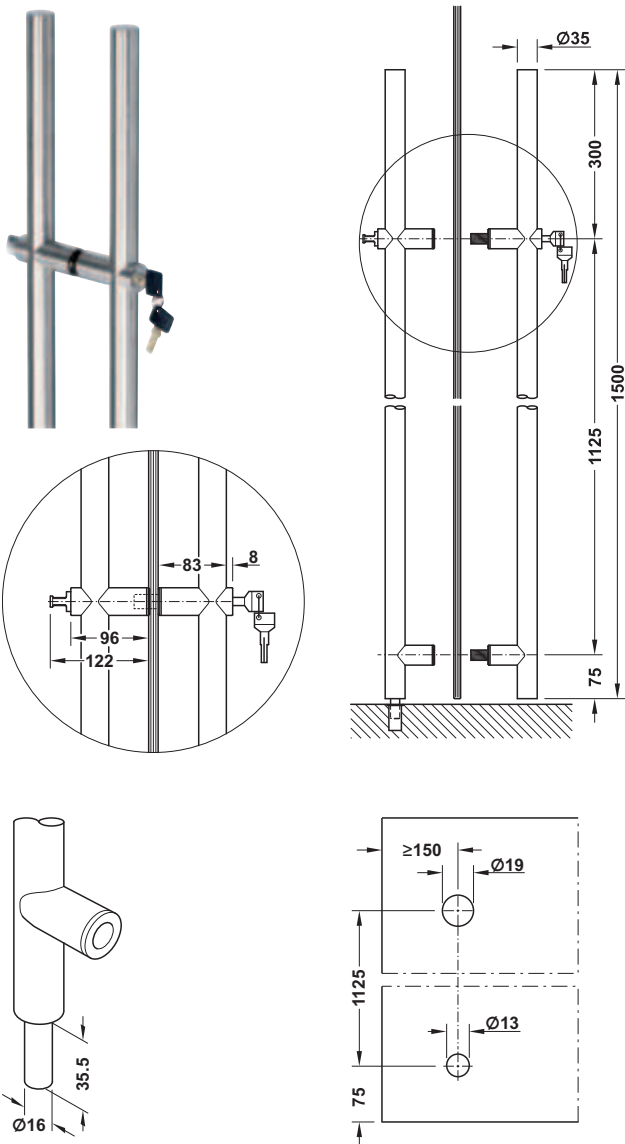
- > Area of application: Fixed glass panels with wall/ceiling connection
- > For glass thickness: 10–12 mm
- > Material: Covers: Stainless steel
- > Finish: Satin
- > Length: 3,000 mm
- > Installation: For concealed clamp fixing with hex socket head screws, clamp fixing points every 300 mm

Supplied with

- 1 clip-on profile
- 2 stainless steel covers

Version	Cat. No.
Without glass preparation	981.35.212

PH 2139 Pull handle
Lockable



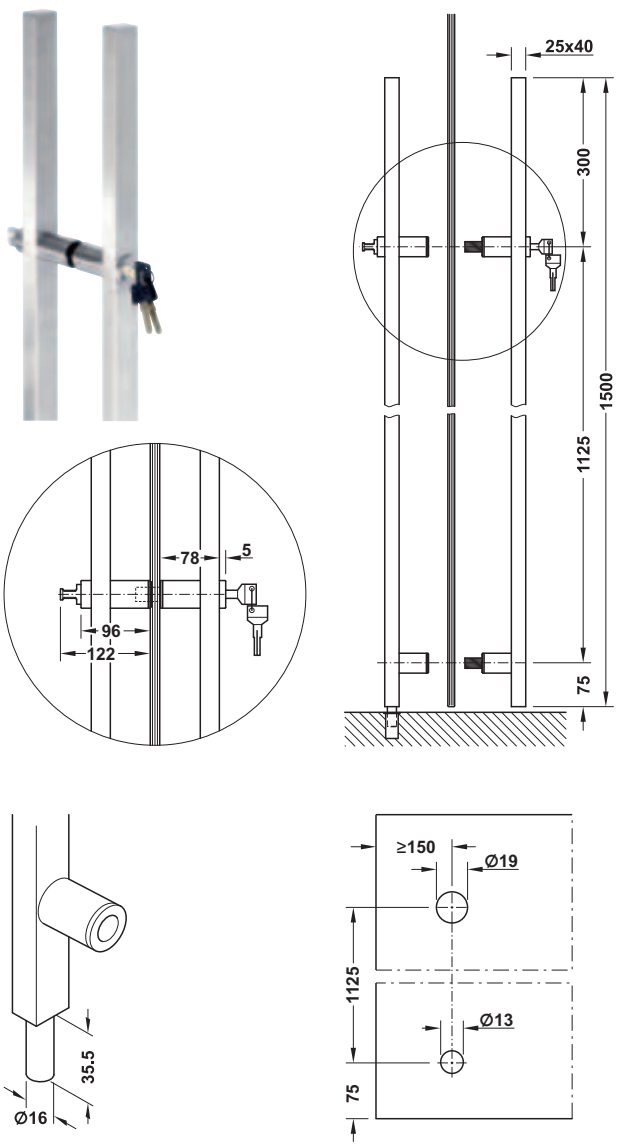
- > Material: Stainless steel
- > Finish: Satin
- > Version: Inside with thumbturn
- > Tube Ø: 35 mm
- > For glass thickness: 8–12 mm

Supplied with

- 1 pair of pull handles, fixed in pairs
- 5 reversible keys
- 1 dust excluding socket with spring catch

Version	Cat. No.
Lockable from inside	903.03.674

PH 2140 Pull handle
Lockable



- > Material: Stainless steel
- > Finish: Satin
- > Version: Inside with thumbturn
- > Cross section: Tube 25 x 40 mm
- > For glass thickness: 8–12 mm

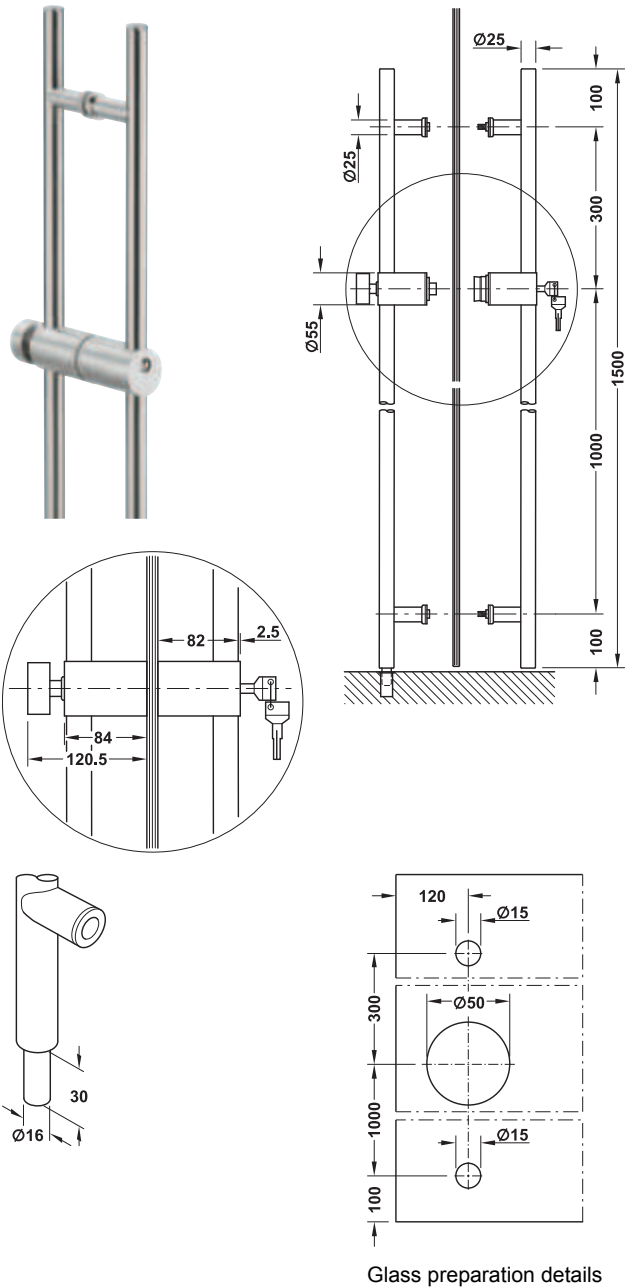
Supplied with

- 1 pair of pull handles, fixed in pairs
- 5 reversible keys
- 1 dust excluding socket with spring catch

Version	Cat. No.
Lockable from inside	903.03.684

PH 2141 Pull handle
Lockable

With single Euro cylinder with 8-fold adjustable locking lug.



Glass preparation details

- > Material: Stainless steel
- > Finish: Satin
- > Version: Inside with thumbturn
- > Tube Ø: 25 mm
- > For glass thickness: 8–12 mm

Supplied with

- 1 pair of pull handles, fixed in pairs
- 1 single Euro cylinder with 3 keys
- 1 dust excluding socket with spring catch

Version	Cat. No.
Lockable from inside	903.03.675

DIALOCK.

THINKING AHEAD IN
ACCESS MANAGEMENT.



WELL THOUGHT OUT
FOR THE USER.

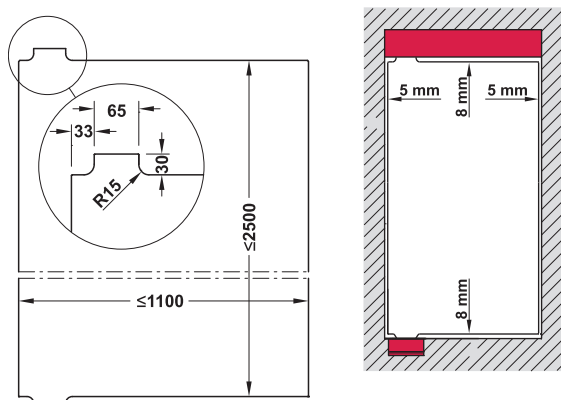
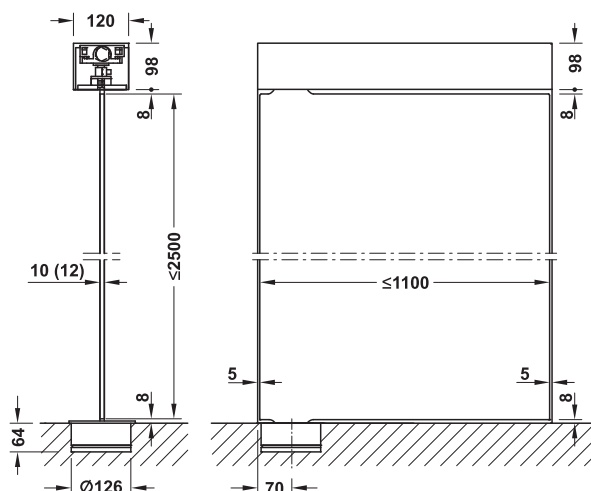
Dialock makes it easier to organise
operating procedures.

The electronic access control and
identification system adapts itself
to your requirements.

Your personal and reliable access
control management is achieved in
conjunction with our comprehensive
on-site service by easily scalable
access points, any number of users and
locking plans that are tailored to your
requirements. Engineered by Häfele.

Visur Patch fitting for double action doors

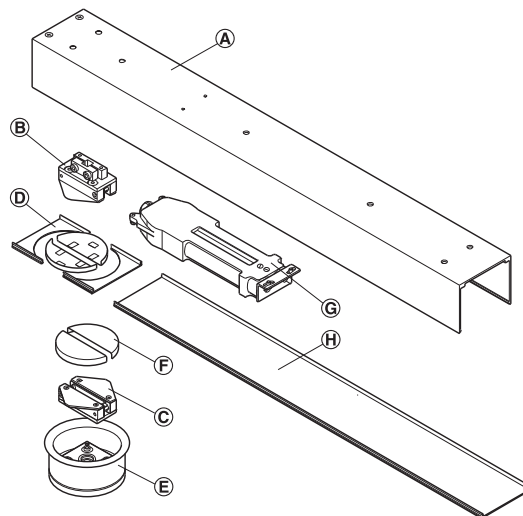
For all-glass doors



Identical glass tongue at top and bottom

- > Area of application: For doors made of tempered safety glass
- > For glass thickness: 10–12 mm
- > Material: Aluminium
- > Finish: Silver coloured anodized
- > Version: No visible fitting components within the door leaf area
- > Installation: Transom case for installation in transom or ceiling, bearing cup with pivot insert recess mounted in floor, for concealed clamp fixing with hex socket head screws
- > Closing force: EN 3
- > Mounting: For DIN left and DIN right hand use
- > Door weight: ≤85 kg
- > Door width: ≤1,100 mm
- > Door height: ≤2,500 mm

System set-up



- A** Transom case for installation in transom or ceiling
1-piece for max. door width 1,100 mm
2-piece for max. door width 2 x 1,100 mm
- B** Glass clamp, top
- C** Glass clamp, bottom
- D** Cover profile sections
- E** Bottom bearing cup with covering ring
- F** Cover caps
- G** RTS 85 concealed transom closer
- H** Transom case cover

Supplied with

- 1 transom case
- 1 top and bottom clamp
- 2 cover profile sections
- 1 bearing cup with cover ring
- 4 cover caps
- 1 RTS 85 concealed transom closer

Area of application	Cat. No.
Single door	981.29.401
Double door	981.29.402

Order reference

Internal width specified in mm (transom case dimensions).
The glass tongues must be taken into consideration when calculating the glass dimensions.
The Visur patch fitting for double action doors is available with closing force EN 2 for door widths <800 mm. If this is required, please note in the comment field accordingly when ordering.