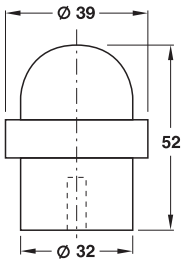
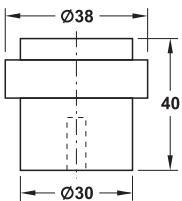


Startec Floor mounted door stops



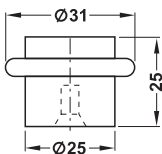
• Fixing material supplied

Material	Finish	Cat. No.
Stainless steel	Matt	937.52.000



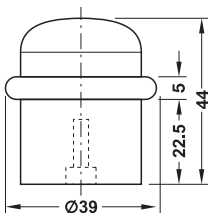
• Fixing material supplied

Material	Finish	Cat. No.
Stainless steel	Matt	937.52.080



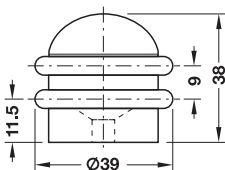
• Fixing material supplied

Material	Finish	Cat. No.
Stainless steel	Matt	937.52.060



• Fixing material supplied

Material	Finish	Cat. No.
Zinc alloy	Nickel plated matt	937.55.806
	Chrome plated polished	937.55.802
	Brass coloured polished	937.55.808

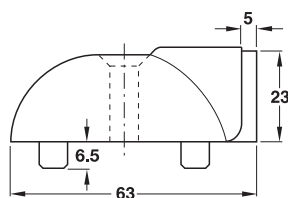


• Fixing material supplied

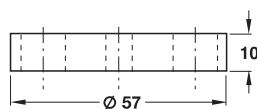
Material	Finish	Cat. No.
Zinc alloy	Nickel plated matt	937.55.816
	Chrome plated polished	937.55.812
	Brass coloured polished	937.55.818



Floor mounted door stop



Foot plate

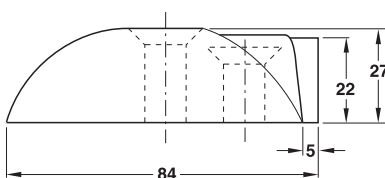


> Fixing material supplied

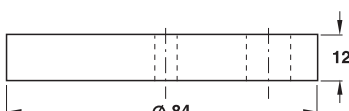
Material	Finish	Cat. No.
Floor mounted door stop		
Stainless steel	Satin	937.52.030
Foot plate		
Hard rubber	Black	937.52.041



Floor mounted door stop

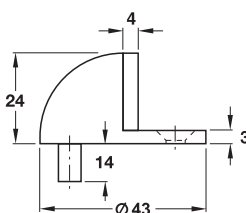
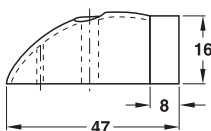


Foot plate



> Fixing material supplied

Material	Finish	Cat. No.
Floor mounted door stop		
Stainless steel	Satin	937.52.020
Foot plate		
Hard rubber	Black	937.52.040



> Fixing material supplied

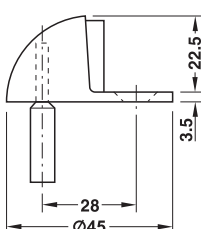
Material	Finish	Cat. No.
Stainless steel	Satin	937.52.050

> Fixing material supplied

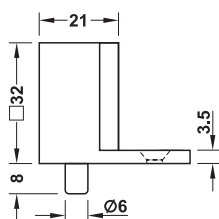
Material	Finish	Cat. No.
Stainless steel	Satin	937.52.070

> Version: With rubber buffer and dowel > Fixing material supplied

Material	Finish	Cat. No.
Brass	Matt chrome plated	937.41.104



Startec Floor mounted door stop



> Fixing material supplied

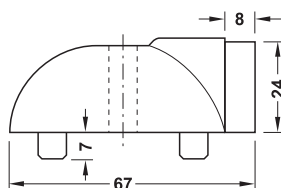
Material	Finish	Cat. No.
Stainless steel	Satin	937.52.090

Dorma Floor mounted door stops

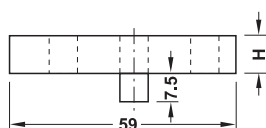
→ Model TZ 5000/TZ55/TZ56



TZ 5000 floor mounted door stop



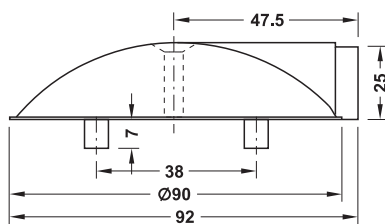
TZ 55, TZ 56 foot plate



> Fixing material supplied

Material	Finish	Height H mm	Cat. No.
Floor mounted door stop			
Stainless steel	Satin-finish	–	937.50.500
Foot plate			
Plastic	Black	10	937.50.510
		15	937.50.520

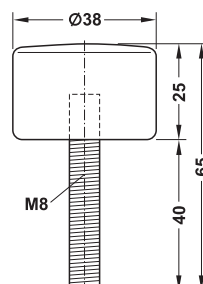
→ Model TZ 5001



> Fixing material supplied

Material	Finish	Cat. No.
Stainless steel	Satin-finish	937.50.600

→ Model TZ 5010

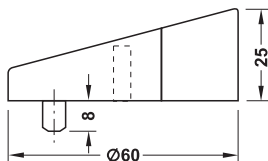


> Fixing material supplied

Material	Finish	Cat. No.
Rubber	Black	937.91.603

FSB Floor mounted door stops

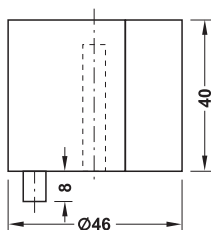
→ Model 38 3816



• Fixing material supplied

Material	Finish	Cat. No.
Stainless steel	Matt	937.50.200
Aluminium	Silver coloured	937.60.201

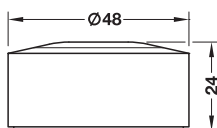
→ Model 38 3817



• Fixing material supplied

Material	Finish	Cat. No.
Aluminium	Silver coloured	937.60.301

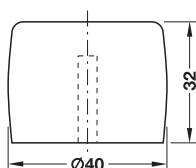
→ Model 38 3878



• Fixing material supplied

Material	Finish	Cat. No.
Stainless steel	Matt	937.52.900
Aluminium	Silver coloured	937.62.001

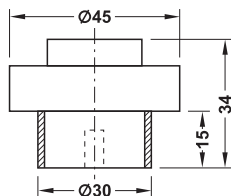
→ Model 38 3880 01



• Fixing material supplied

Material	Finish	Cat. No.
Rubber	Black	937.90.007

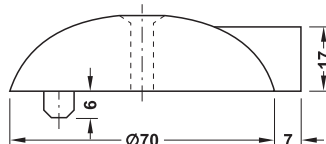
→ Model 38 3881



> Fixing material supplied

Material	Finish	Cat. No.
Stainless steel	Satin	937.50.400
Aluminium	Silver coloured	937.60.401

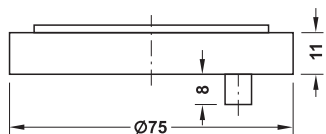
→ Model 38 3884 00/10



> Fixing material supplied

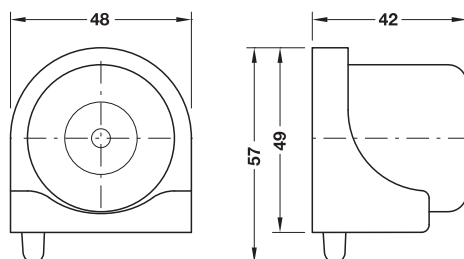
Material	Finish	Cat. No.
Floor mounted door stop		
Stainless steel	Satin	937.50.000
Aluminium	Silver coloured	937.60.001
Foot plate		
Zinc alloy	Black	937.50.107

3884 00 floor mounted door stop



3884 10 foot plate

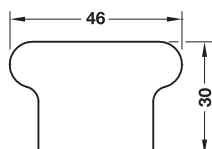
→ Model 38 3888



> Fixing material supplied

Material	Finish	Cat. No.
Aluminium	Silver coloured	937.61.201

→ Model 38 3896 00

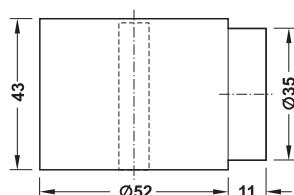


> Fixing material supplied

Material	Finish	Cat. No.
Rubber	Grey	937.91.805

Hewi Floor mounted door stops

→ Model 615



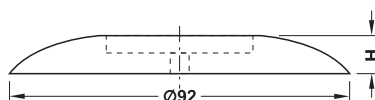
- Fixing material supplied

Material	Cat. No.
Polyamide	937.70.0**

Order reference

When ordering, replace the ** of the Cat. No. with the colour number of your choice.

→ 620 series



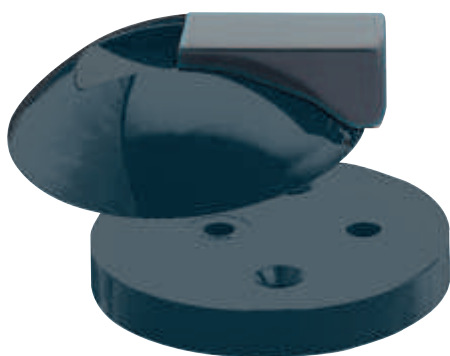
- Fixing material supplied

Material	Height H mm	Cat. No.
Polyamide	10	937.70.1**
	14	937.70.2**
	22	937.70.3**

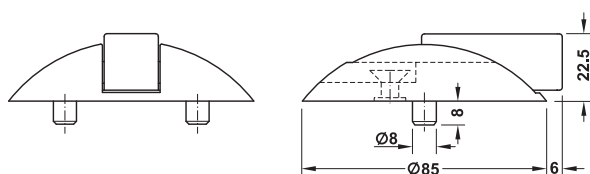
Order reference

When ordering, replace the ** of the Cat. No. with the colour number of your choice.

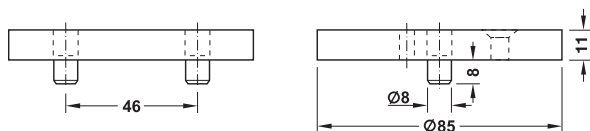
→ Model 625/625.1



Floor mounted door stop with foot plate



625 floor mounted door stop



625.1 foot plate

- Fixing material supplied

Material	Cat. No.
Floor mounted door stop	
Polyamide	937.70.4**
Foot plate	
Polyamide	937.70.5**

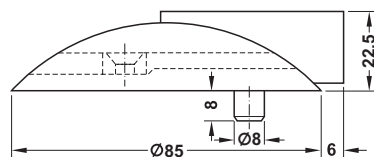
Order reference

When ordering, replace the ** of the Cat. No. with the colour number of your choice.

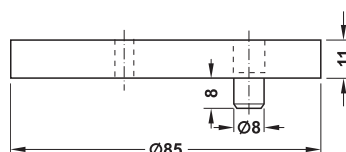
 13 Buttercup yellow	 18 Mustard yellow	 24 Orange	 30 Bordeaux
 33 Ruby red	 36 Coral	 50 Steel blue	 53 Ultramarine blue
 55 Aqua	 72 May green	 74 Apple green	 80 Coffee brown
 84 Umber	 86 Sand	 90 Jet black	 92 Anthracite grey
 95 Stone grey	 97 Light grey	 98 Signal white	 99 Pure white

Hewi Floor mounted door stops

→ Model 625XA



Floor mounted door stop

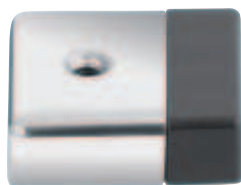


Foot plate

- Version: With theft protection, with spring loaded, black, elastic buffer
- Material: Stainless steel
- Installation: Concealed screws
- Fixing material supplied

Material	Finish/colour	Cat. No.
Floor mounted door stop		
Stainless steel	Matt	937.54.600
Foot plate		
Polyamide	Jet black	937.70.590

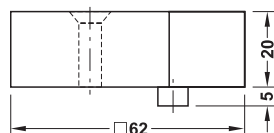
→ Model 100



Polished



Matt



- Version: With anti-twist device, with black, elastic buffer, with visible screws
- Material: Stainless steel
- Fixing material supplied

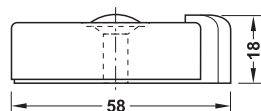
Model	Finish	Cat. No.
100XC625	Polished	937.54.611
100XA625	Matt	937.54.610

Hoppe Floor mounted door stops

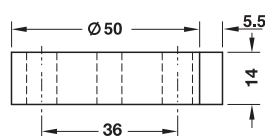
→ Model E 484



Floor mounted door stop



Floor mounted door stop

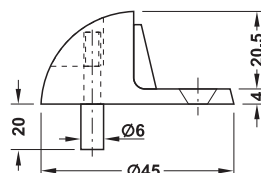


Foot plate

- Fixing material supplied

Material	Finish	Cat. No.
Floor mounted door stop		
Stainless steel	Matt	937.51.000
Foot plate		
Plastic	Black	937.52.203

→ Model M 496

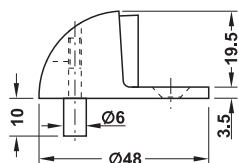


- Fixing material supplied

Material	Finish	Cat. No.
Brass	Polished	937.40.608

Jado Floor mounted door stops

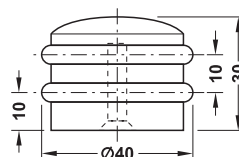
→ Model 453/000



> Fixing material supplied

Material	Finish	Cat. No.
Brass	Matt nickel plated	937.40.506
	Polished chrome plated	937.40.502
	Polished	937.40.508

→ Model 453/040

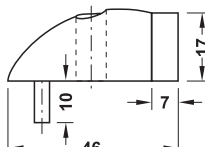


> Fixing material supplied

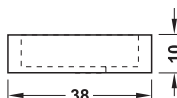
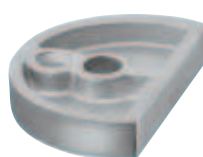
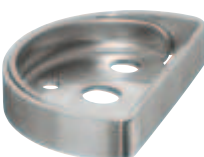
Material	Finish	Cat. No.
Brass	Matt nickel plated	937.40.406
	Polished chrome plated	937.40.402
	Polished	937.40.408

KWS Floor mounted door stops

→ Model 2001/1558

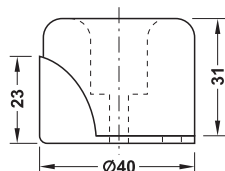


2001 floor mounted door stop



Foot plate 1558

→ Model 2015

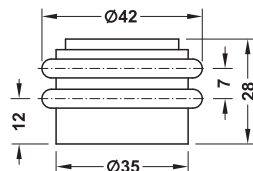


> Fixing material supplied

Material	Finish	Cat. No.
Floor mounted door stop		
Stainless steel	Satin	937.50.800
Aluminium	Silver coloured anodized	937.60.601
Foot plate		
Stainless steel	Satin	937.50.810
Aluminium	Silver coloured anodized	937.60.611

→ Model 2053

For wall and floor mounting



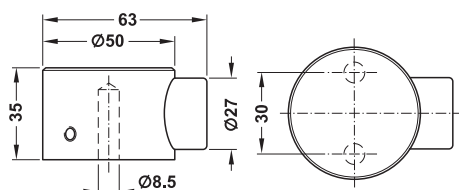
> Fixing material supplied

Material	Finish	Cat. No.
Aluminium	Silver coloured anodized	937.60.701

- > Version: With black rubber buffer and two black rubber rings
- > Area of application: For door weights up to 50 kg
- > Fixing material supplied

Material	Finish	Cat. No.
Stainless steel	Satin brushed	937.52.720
Aluminium	Silver coloured anodized	937.61.711

→ Model 2110

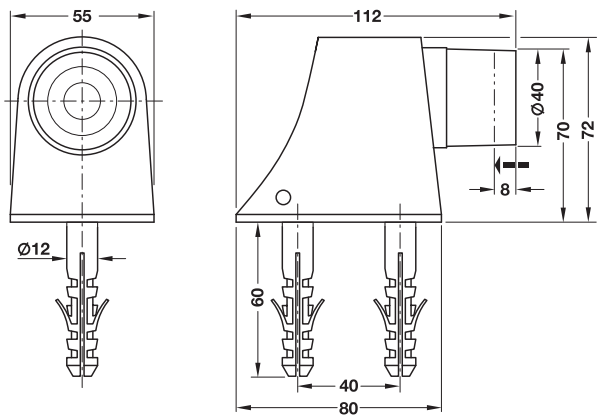
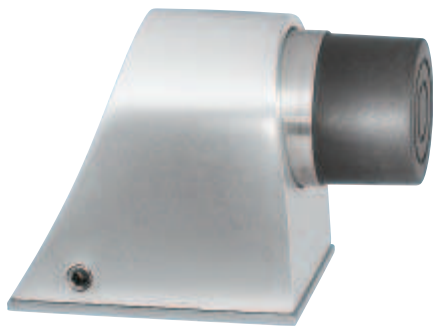


- > Version: With spring loaded buffer, black
- > Fixing material supplied

Material	Finish	Cat. No.
Stainless steel	Satin	937.52.300
Aluminium	Silver coloured anodized	937.61.401

KWS Floor mounted door stops

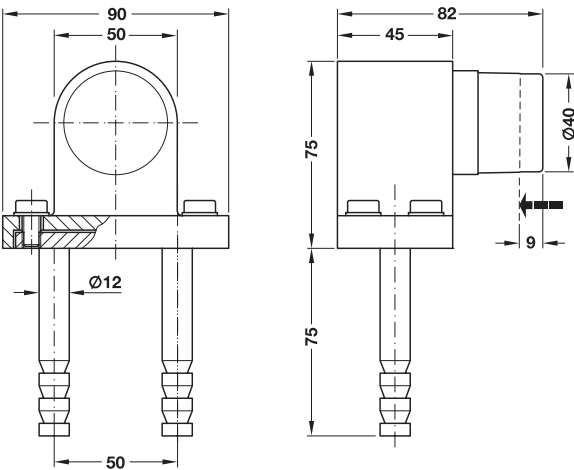
→ Model 2124



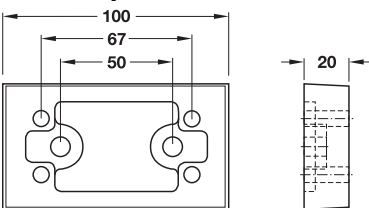
- Version: With spring loaded buffer, black
- Fixing material supplied

Material	Finish	Cat. No.
Aluminium	Silver coloured anodized	937.61.701
	Silver coloured enamelled	937.61.709

→ Model 2023/2024



→ Foot plate



- Version: With spring loaded buffer, black, with or without stone dowel

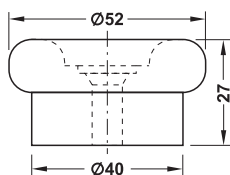
Material	Finish	Cat. No.
Floor mounted door stop with stone dowel for embedding in wall		
Stainless steel	Matt	937.52.710
Aluminium	Silver coloured anodized	937.61.611
	Silver coloured enamelled	937.61.619
Floor mounted door stop without fixing material		
Stainless steel	Matt	937.52.700
Aluminium	Silver coloured anodized	937.61.601
	Silver coloured enamelled	937.61.609

- Area of application: For floor mounted door stop without stone dowel, for door holder model 1009/1010
- Fixing material supplied

Material	Finish	Cat. No.
Aluminium	Black, RAL 9011, powder coated	938.02.373

Vieler Floor mounted door stops

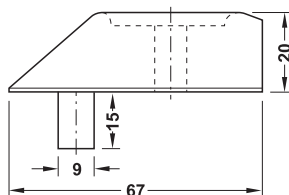
→ Model 5120



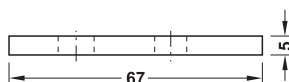
> Fixing material supplied

Material	Finish	Cat. No.
Stainless steel	Satin	937.51.500

→ Model 5103/1027



5103 floor mounted door stop



1027 foot plate

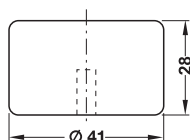
> Fixing material supplied

Material	Finish	Cat. No.
Stainless steel	Satin	937.51.100
Plastic	Black	937.51.203

Floor mounted door stop

Foot plate

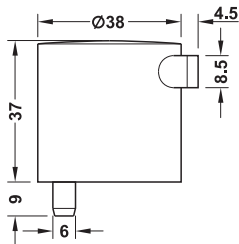
→ Model TP 5011



> Fixing material supplied

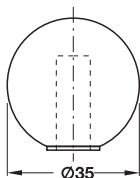
Material	Finish	Cat. No.
Rubber	Black	937.91.203

Floor mounted door stops



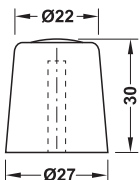
• Fixing material supplied

Material	Finish	Cat. No.
Zinc alloy	Stainless steel effect	937.55.780



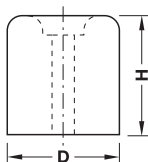
• Fixing material supplied

Material	Finish	Cat. No.
Rubber	White	937.90.200
	Brown	937.90.246
	Beige	937.90.240
	Black	937.90.207



• Fixing material not supplied

Material	Finish	Cat. No.
Plastic	White	937.90.800
	Grey	937.90.803
	Brown	937.90.846



• Fixing material supplied

Material	Finish	Diameter D mm	Height H mm	Cat. No.
Rubber	White	30	34	937.90.600
			25	937.90.500
		40	35	937.90.400
			50	937.90.300
	Grey	40	25	937.90.503
			35	937.90.403
			50	937.90.303

Floor mounted door stops

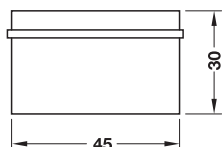


No more drilling!

All "No-more-drilling" products can be mounted quickly and reliably with an innovative fixing system to all firm smooth and rough surfaces such as

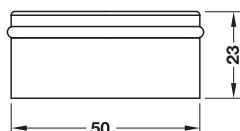
- natural stone
- concrete
- or several plastics
- tiles
- metal
- glass
- wood

The connection remains durable even under permanent heavy load and the fitting can be removed again without leaving a trace of residue in most cases.



- Fixing material (adhesive set) supplied

Material	Finish	Cat. No.
Zinc alloy	Stainless steel effect	937.52.600



- Fixing material (adhesive set) supplied

Material	Finish	Cat. No.
Stainless steel	Brushed	937.52.610

Floor Mounted and Wall Mounted Door Stops

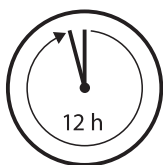
Installation Fix securely.



Peel off protective foil, press on adapter firmly.



Pierce tube, fill adhesive agent in one opening until it emerges from the other one.



Allow to cure for 12 hours.



Mount accessory, done!

Removal Remove without residue.



Wrench adapter with pliers.



Remove adhesive agent residue with glass scraper or silicone remover.



13

16.02.2017
ID 1808

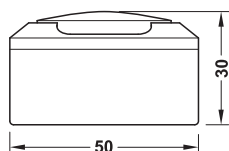
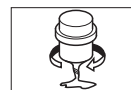
BB 13.58

Floor mounted door stops

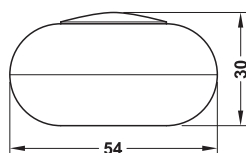


Glue fixing or screw fixing possible!

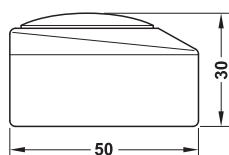
- Installation: For screw fixing, for glue fixing: Universal use on all smooth surfaces, can be removed without residues by rotation
- Supplied with: Wall plugs and screws



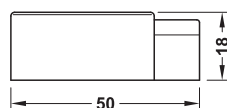
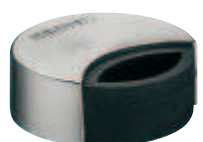
Material	Finish	Cat. No.
Zinc alloy	Stainless steel effect	937.55.700



Material	Finish	Cat. No.
Zinc alloy	Stainless steel effect	937.55.710



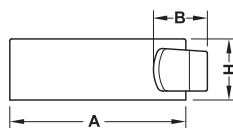
Material	Finish	Cat. No.
Zinc alloy	Stainless steel effect	937.55.720



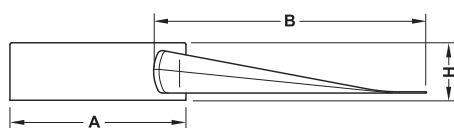
Material	Finish	Cat. No.
Zinc alloy	Stainless steel effect	937.55.770

Order reference

The rubber buffer can be rotated to suit the door weight.



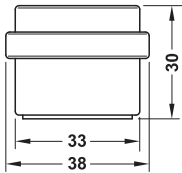
Material	Finish	Dim. A mm	Dim. B mm	Height mm	Cat. No.
Zinc alloy	Stainless steel effect	50	16	17	937.55.730
		90	30	18	937.55.740



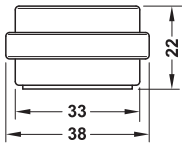
Material	Finish	Dim. A mm	Dim. B mm	Height mm	Cat. No.
Zinc alloy	Stainless steel effect	50	65	17	937.55.750
		90	120	18	937.55.760

Floor mounted door stops

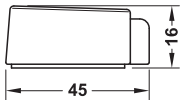
- Installation: For glue fixing: Universal use on all smooth surfaces, can be removed without residues by rotation



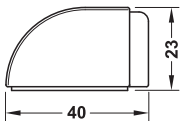
Material	Finish	Cat. No.
Plastic	Transparent	937.96.027



Material	Finish	Cat. No.
Plastic	Transparent, green rubber	937.96.030
	Transparent, blue rubber	937.96.038
	Transparent, pink rubber	937.96.039



Material	Finish	Cat. No.
Plastic	Transparent	937.96.007

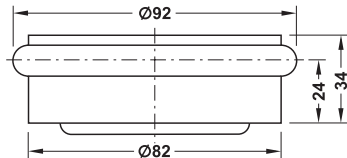
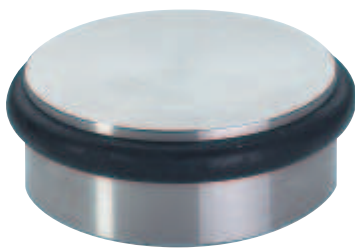


Material	Finish	Cat. No.
Plastic	Transparent	937.96.017

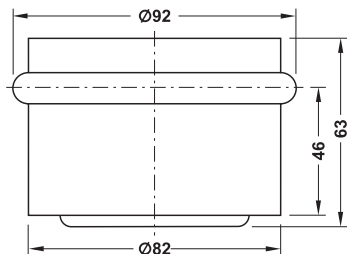
Floor Mounted and Wall Mounted Door Stops



Floor mounted door stop



Puk

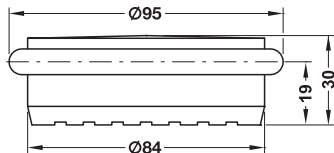


Big Puk

- Area of application: For use as floor mounted door holder or floor mounted door stop

Note
The Puk and Big Puk floor mounted door stops have a high own weight and a non-slip pad and therefore are not screwed to the floor.

Material	Finish	Cat. No.
Puk 1.1 kg		
Stainless steel	Satin	937.85.600
Big Puk 2.2 kg		
Stainless steel	Satin	937.85.900

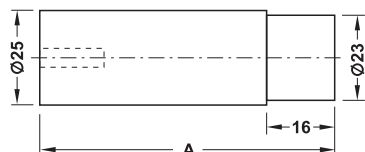


- Area of application: For use as floor mounted door holder or floor mounted door stop
- Version: With anti-slip pad
- Weight: 1.0 kg
- Installation: Without fixing

Note
The floor mounted door stop has a high own weight and a non-slip pad and therefore is not screwed to the floor.

Material	Finish	Cat. No.
Steel	Stainless steel coloured	937.53.300

Startec Wall mounted door stop



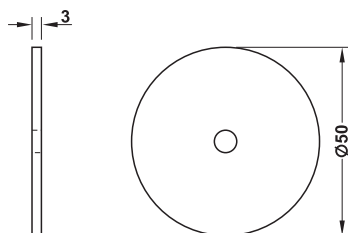
- Fixing material supplied

Material	Finish	Dim. A mm	Cat. No.
Stainless steel	Matt	48	937.12.120
		60	937.12.110
		78	937.12.100

Order reference

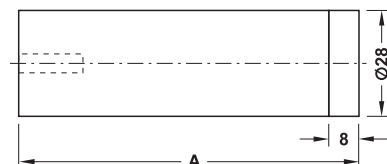
Please order rose Cat. No. 937.12.190 separately, if required.

→ Startec Rose



Material	Finish	Thickness mm	Cat. No.
Stainless steel	Matt	3	937.12.190

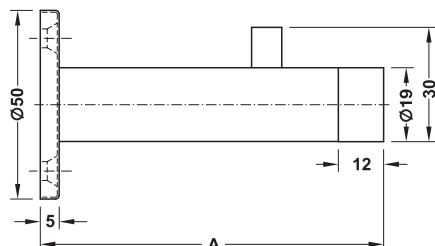
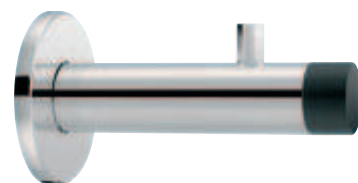
Wall mounted door stop



- Material: Stainless steel
- Finish: Matt
- Diameter: 28 mm
- Fixing material supplied

Dim. A mm	Cat. No.
27	937.13.800
60	937.13.810
90	937.13.820
100	937.13.830
120	937.13.840

Wall mounted door stop with hook



- Fixing material supplied

Material	Finish	Dim. A mm	Cat. No.
Stainless steel	Matt	90	937.12.800
	Chrome plated polished	90	937.12.802

Startec Wall mounted door stop

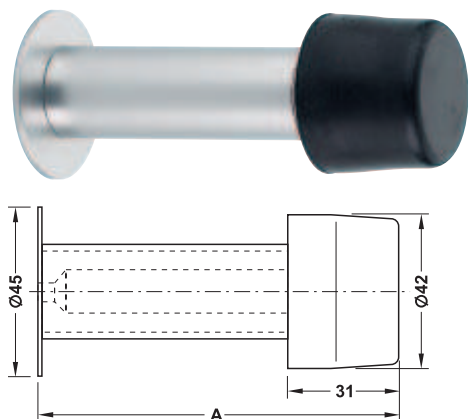


• Fixing material supplied

Material	Finish	Dim. A mm	Cat. No.
Stainless steel	Satin	30	937.12.130
		78	937.12.140

FSB Wall mounted door stop

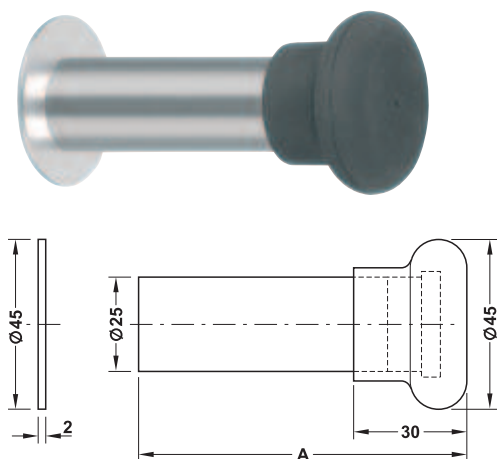
→ Model 38 3880



• Fixing material supplied

Model	Material	Finish/colour	Dim. A mm	Cat. No.
38 3880	Aluminium	Silver coloured	60	937.20.001
			90	937.20.201
			120	937.20.401
	Stainless steel	Satin	60	937.10.000
			90	937.10.200
			120	937.10.400

→ Model 38 3896



• Fixing material supplied

Model	Material	Finish/colour	Dim. A mm	Cat. No.
38 3896	Aluminium	Silver coloured	60	937.20.011
			90	937.20.211
			120	937.20.411
	Stainless steel	Satin	60	937.10.010
			90	937.10.210
			120	937.10.410

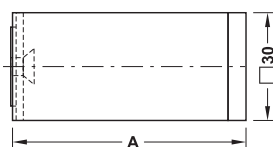
Hewi Wall mounted door stops

→ Model 100



Polished

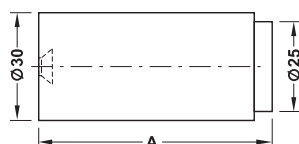
Matt



- Version: With theft protection, with black, elastic buffer
- Installation: Concealed screws
- Fixing material supplied

Model	Material	Finish	Dim. A mm	Cat. No.
100XC611.15	Stainless steel	Polished	15	937.13.061
100XA611.15		Matt	15	937.13.060
100XC611.65		Polished	65	937.13.063
100XA611.65		Matt	65	937.13.062

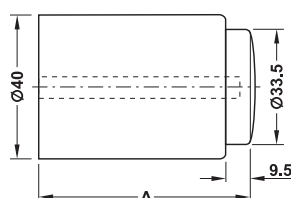
→ Model 611XA



- Version: With theft protection, with black, elastic buffer
- Installation: Concealed screws
- Fixing material supplied

Model	Material	Finish	Dim. A mm	Cat. No.
611XA.15	Stainless steel	Matt	15	937.13.000
611XA.65			65	937.13.010

→ Model 611



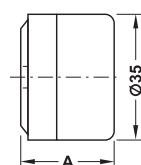
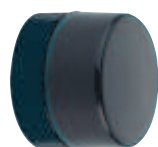
- Fixing material supplied

Model	Material	Dim. A mm	Cat. No.
611	Polyamide	30	937.30.1**
		60	937.30.3**
		90	937.30.5**
		105	937.30.6**

Order reference

When ordering, replace the ** of the Cat. No. with the colour number of your choice.

→ Model 610



- Fixing material supplied

Model	Material	Dim. A mm	Cat. No.
610	Polyamide	26	937.30.0**

Order reference

When ordering, replace the ** of the Cat. No. with the colour number of your choice.

Floor Mounted and Wall Mounted Door Stops



13 Buttercup yellow	18 Mustard yellow	24 Orange	30 Bordeaux	33 Ruby red	36 Coral	50 Steel blue	53 Ultramarine blue
55 Aqua	72 May green	74 Apple green	80 Coffee brown	84 Umber	86 Sand	90 Jet black	92 Anthracite grey
95 Stone grey	97 Light grey	98 Signal white	99 Pure white				

Hoppe Wall mounted door stop

→ Model E487 / K487

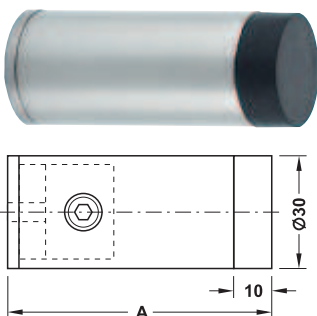


• Fixing material supplied

Model	Material	Finish	Dim. A mm	Cat. No.
E487	Stainless steel	Matt	20	937.11.100
K487	Plastic	Traffic white	20	937.91.000
		Agate grey	20	937.91.003

KWS Wall mounted door stop

→ Model 2070 – 2073



• Fixing material supplied

Model	Material	Finish	Dim. A mm	Cat. No.
2070	Aluminium	Silver coloured	60	937.20.701
2071			80	937.20.801
2072			100	937.20.901
2073			120	937.21.001
2070	Stainless steel	Matt	60	937.10.702
2071			80	937.10.802
2072			100	937.10.902
2073			120	937.11.002
2070	Brass	Polished	60	937.00.308
2071			80	937.00.408
2072			100	937.00.508
2073			120	937.00.608

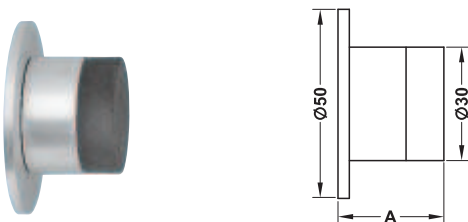
→ Model 2008



• Fixing material supplied

Model	Material	Finish	Dim. A mm	Cat. No.
2008	Aluminium	Silver coloured	25	937.20.601
	Stainless steel	Matt	25	937.12.510

→ Model 2007

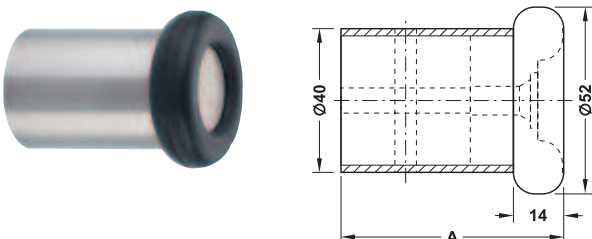


• Fixing material supplied

Model	Material	Finish	Dim. A mm	Cat. No.
2007	Aluminium	Silver coloured	28	937.23.001
	Stainless steel	Matt	28	937.12.500

Vieler Wall mounted door stop

→ Model 5121 – 5123



• Fixing material supplied

Model	Material	Finish	Dim. A mm	Cat. No.
5121	Stainless steel	Matt	47	937.11.200
5122			62	937.11.300
5123			92	937.11.500

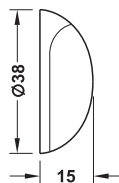
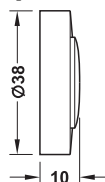
→ Modell TP 5010



• Fixing material supplied

Model	Material	Finish	Dim. A mm	Cat. No.
TP 5010	Aluminium	Silver coloured	15	937.60.801
	Stainless steel	Matt	15	937.51.510

Wall mounted door stops, for screw fixing or glue fixing



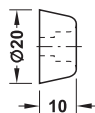
- Installation: For screw fixing: Wall plugs and screws supplied, for glue fixing: Universal use on all smooth surfaces, can be removed without residues by rotation
- Version: For screw fixing or glue fixing

Material	Finish	Cat. No.
Zinc alloy	Stainless steel effect	937.14.610

- Version: For screw fixing or glue fixing

Material	Finish	Cat. No.
Zinc alloy	Stainless steel effect, rubber black	937.14.603
	Stainless steel effect, rubber antracite	937.14.605
	Stainless steel effect, rubber white	937.14.607

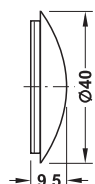
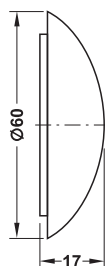
Wall mounted door stop, for screw fixing



- Version: For screw fixing

Material	Finish	Cat. No.
Rubber	White	407.01.730
	Black	407.01.930

Wall mounted door stops, for glue fixing



- Version: Self-adhesive

Material	Finish	Cat. No.
Plastic	White	937.90.100
	Brown	937.90.146
	Beige	937.90.140
	Black	937.90.107

- Version: Self-adhesive

Material	Finish	Cat. No.
Plastic	White	937.91.500
	Brown	937.91.546

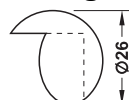
- Version: Self-adhesive

Material	Finish	Cat. No.
Plastic	White	937.91.400
	Brown	937.91.446

- Version: Self-adhesive

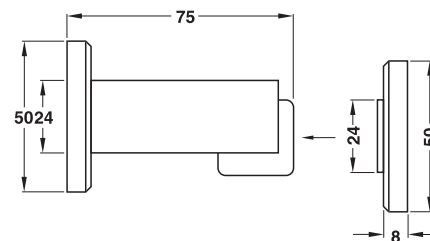
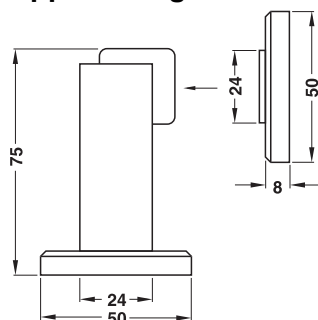
Material	Finish	Cat. No.
Plastic	White	937.91.300
	Brown	937.91.346

Corner buffer, for glue fixing



Magnetic door holder

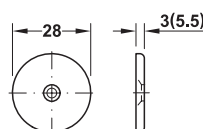
→ For floor and wall mounting, pull approx. 4 kg



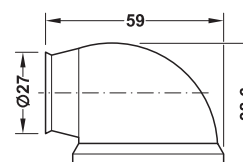
- > Version: With magnetic adhesion mechanism
- > Pull: Approx. 4 kg
- > Installation: For screw fixing to wall or floor

Material	Finish	Cat. No.
Zinc alloy	Stainless steel coloured	938.23.000

→ For floor mounting, pull 10 or 20 kg



Counterpiece

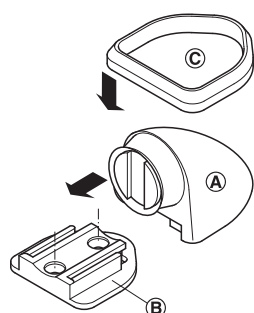


Housing



Dim. in brackets apply to pull 20 kg

Installation

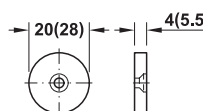


Screw housing base (B) on workpiece, then slide housing (A) onto housing base (B). Clip on cover (C) for fixation. Screw counterpiece on door.

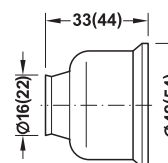
- > Area of application: Floor
- > Material: Housing: Plastic, counterpiece: Steel
- > Version: Rigid housing and counterpiece

Pull kg	Colour	Packing pieces	Cat. No.
10	Housing: Grey	1	246.98.510
20	Housing: Brown	1 or 10	246.98.100
	Housing: Grey		246.98.500

→ For wall mounting, pull 10 or 20 kg



Counterpiece

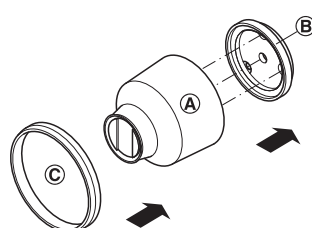


Housing



Dim. in brackets apply to pull 20 kg

Installation



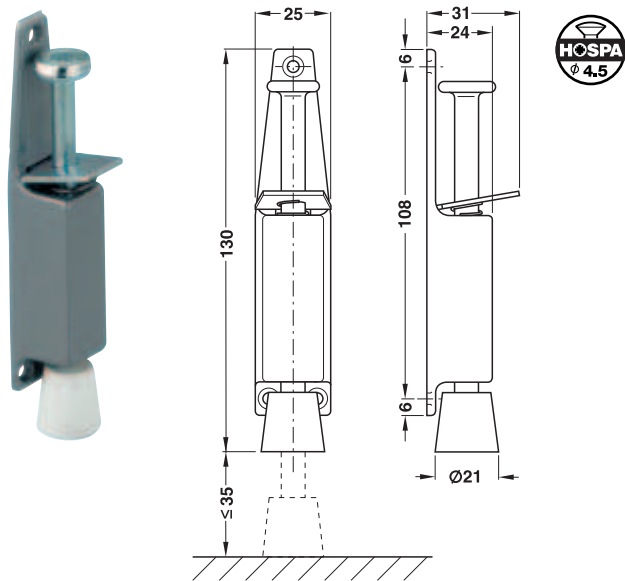
Screw housing base (B) on workpiece, then mount housing (A) onto housing base (B). Clip on cover (C) for fixation. Screw counterpiece on door.

- > Area of application: Wall (indoor or outdoor)
- > Material: Housing: Plastic, counterpiece: Steel
- > Version: Rigid housing and counterpiece

Pull kg	Colour	Packing pieces	Cat. No.
10	Housing: Brown	1 or 10	246.99.107
	Housing: Grey	1	246.99.500
20	Housing: Grey	1 or 10	246.99.510

Startec Door holder

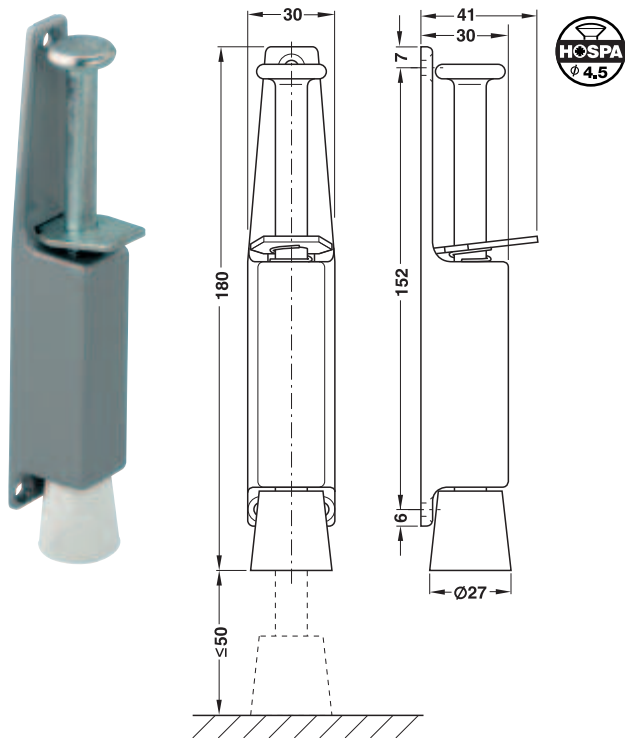
→ Travel 35 mm



- Version: For holding the door at any opening angle
- Material: Case: Zinc alloy, bolt: Steel, stopper: Rubber
- Finish: Case: Lacquered, bolt: Galvanized, stopper: White
- Door weight: ≤25 kg
- Travel: 35 mm

Material	Finish	Cat. No.
Zinc alloy	Silver colour lacquered	938.04.001

→ Travel 50 mm

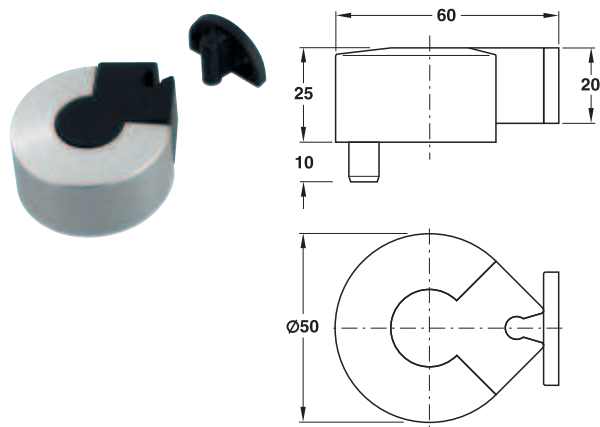


- Version: For holding the door at any opening angle
- Material: Case: Zinc alloy, bolt: Steel, stopper: Rubber
- Finish: Case: Lacquered, bolt: Galvanized, stopper: White
- Door weight: ≤40 kg
- Travel: 50 mm

Material	Finish	Cat. No.
Zinc alloy	Silver colour lacquered	938.04.101

Door Holders, Opening Angle Restraints



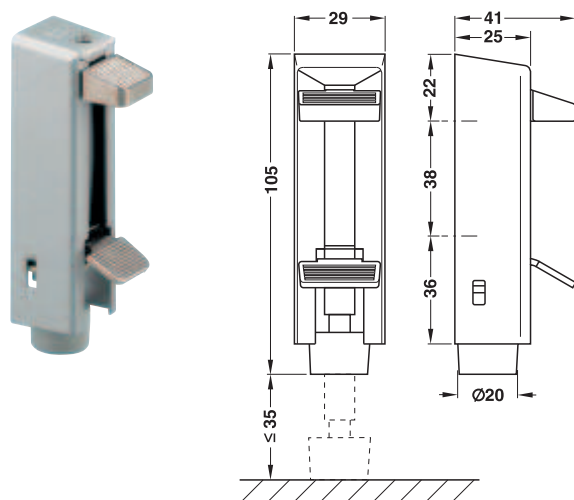
Dorma Door holders**→ Model TZ 5002**

- Area of application: For interior doors
- Version: Floor mounted door stop with clamping mechanism, aluminium with hard rubber
- Installation: For floor mounting
- Fixing material supplied

Note

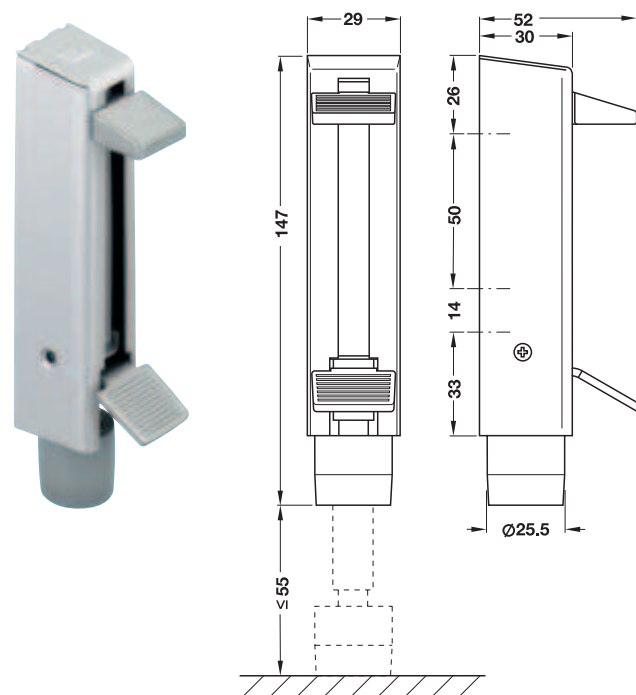
The bottom door gap should be max. 5 mm.

Material	Finish	Cat. No.
Aluminium	Silver coloured anodized	938.01.001

→ Model 350

- Version: For holding the door at any opening angle, with concealed fixing
- Material: Case and bolt: Steel, stopper: Rubber
- Finish: Case: Lacquered, stopper: Grey
- Travel: 35 mm
- Fixing material supplied

Material	Finish	Cat. No.
Steel	Silver colour lacquered	938.00.001

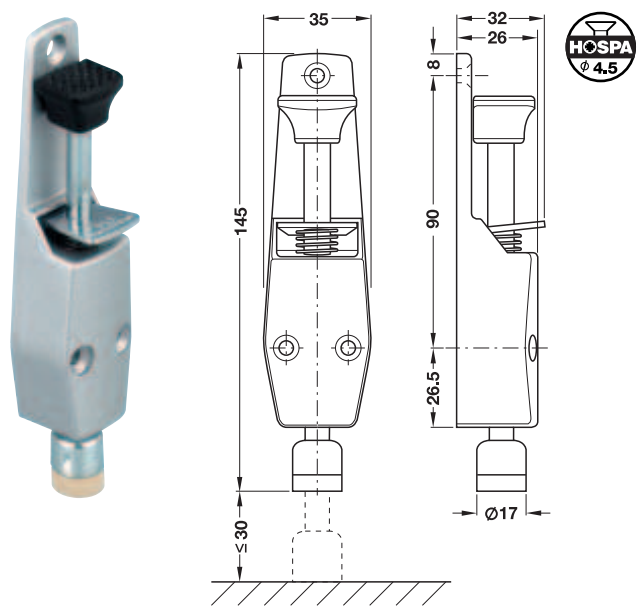
→ Model 360

- Version: For holding the door at any opening angle, with concealed fixing
- Material: Case: Aluminium, stainless steel or steel, bolt: Steel, stopper: Rubber
- Finish: Case: Anodized, rustproof or lacquered, stopper: Grey
- Travel: 55 mm
- Fixing material supplied

Material	Finish	Cat. No.
Aluminium	Silver coloured	938.00.109
Stainless steel	Matt brushed	938.00.100
Steel	Silver colour lacquered	938.00.101
	Brass colour lacquered	938.00.103

G-U Door holders

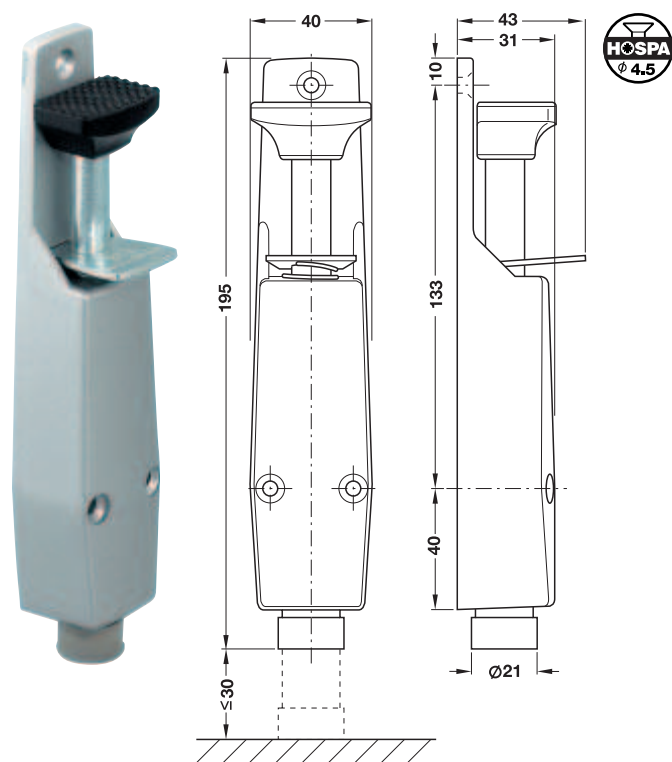
→ Model 3933



- Version: For holding the door at any opening angle
- Material: Case: Zinc alloy, bolt: Steel, stopper: Rubber
- Finish: Case: Lacquered, bolt: Galvanized, stopper: White
- Travel: 30 mm

Material	Finish	Cat. No.
Zinc alloy	Silver colour lacquered	938.03.001
	Dark brown lacquered	938.03.004
	White lacquered	938.03.005

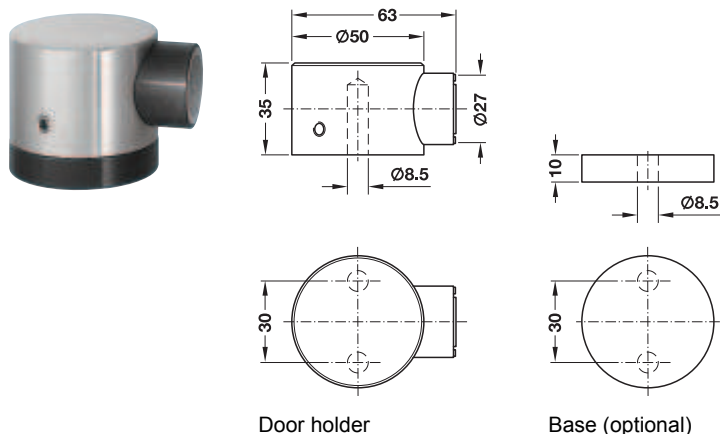
→ Model 3934



- Version: For holding the door at any opening angle
- Material: Case: Zinc alloy, bolt: Steel, stopper: Rubber
- Finish: Case: Lacquered, bolt: Galvanized, stopper: White
- Travel: 30 mm

Material	Finish	Cat. No.
Zinc alloy	Silver colour lacquered	938.03.101
	Dark brown lacquered	938.03.104
	White lacquered	938.03.105



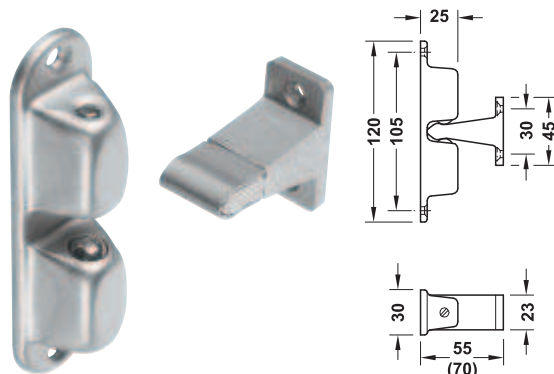
KWS Door holders→ **Model 1015**

- Version: With spring loaded magnet, for braking the door
- Area of application: For interior doors
- Door weight: ≤60 kg
- Installation: For screw fixing to the floor
- Fixing material supplied

Supplied with

- 1 Door holder
- 1 Base, black (10 mm high)
- 1 Counterplate Ø 25 mm, for screw fixing
- 1 Counterplate Ø 25 mm, for glue fixing
- 2 Threaded pins M8 x 80 mm
- 2 Plugs
- 1 Drilling template

Material	Finish	Cat. No.
Aluminium	Silver coloured anodized	938.02.301
Stainless steel	Matt	938.02.300

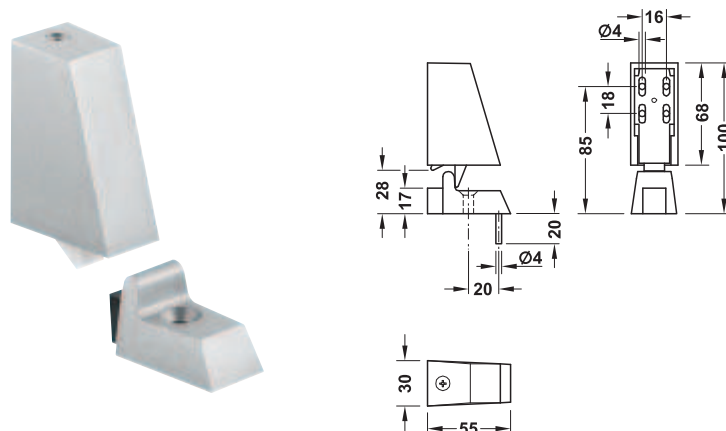
→ **Model 1055/1083**

- Version: Push to hold
- Area of application: For interior or external doors
- Material: Door holder: Steel, floor keep: Aluminium
- Finish: Silver coloured enamelled
- Door weight: 80 kg
- Pull-off force: 80–220 N
- Installation: For screw fixing
- Fixing material supplied

Supplied with

- 1 Door holder
- 1 Floor keep

Distance mm	Finish	Cat. No.
55	Silver coloured enamelled	938.02.011
70	Silver coloured enamelled	938.02.021

→ **Model 1013**

- Version: Push to hold
- Area of application: For interior or external doors
- Material: Door holder: Aluminium, floor keep: Aluminium, latch: Plastic, buffer: Rubber, black
- Finish: Silver coloured enamelled
- Door weight: 50 kg
- Pull-off force: 100 N
- Installation: For screw fixing
- Fixing material supplied

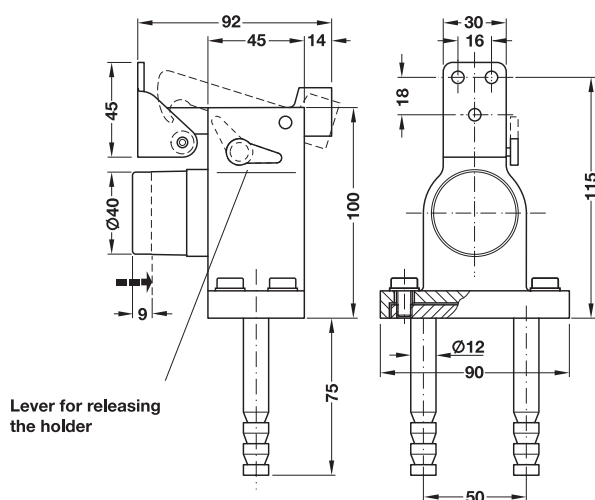
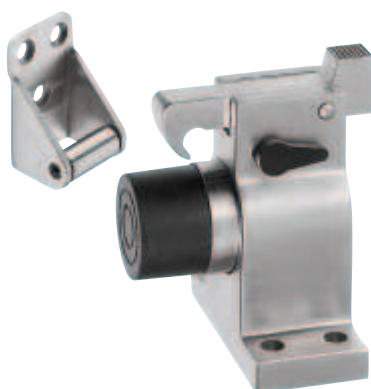
Supplied with

- 1 Door holder
- 1 Floor keep

Material	Finish	Cat. No.
Aluminium	Silver coloured enamelled	938.02.031

KWS Door holders

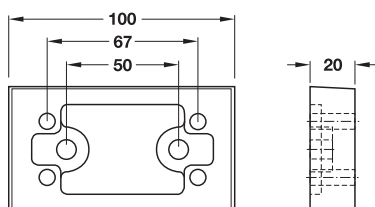
→ Model 1009/1010



- Version: With spring loaded buffer, black
- Area of application: For interior and external doors
- Door weight: ≤100 kg

Material	Finish	Cat. No.
Door holder with stone dowel for embedding in wall		
Stainless steel	Matt	938.02.350
Aluminium	Silver coloured anodized	938.02.351
	Silver coloured enamelled	938.02.359
Door holder without fixing material		
Stainless steel	Matt	938.02.340
Aluminium	Silver coloured anodized	938.02.341
	Silver coloured enamelled	938.02.349

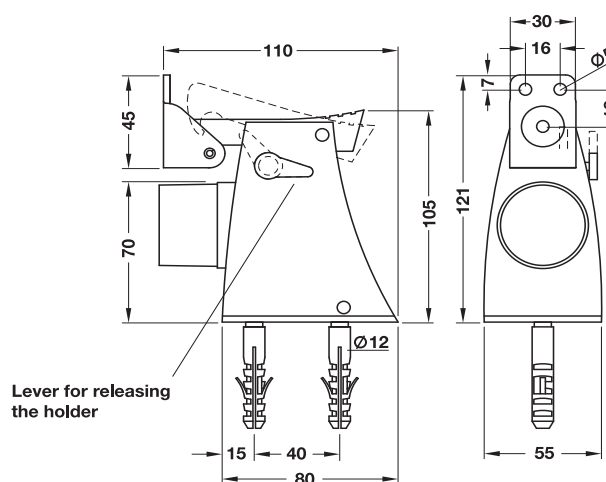
→ Foot plate



- Area of application: For floor mounted door stop without stone dowel, for door holder model 1009/1010
- Fixing material supplied

Material	Finish	Cat. No.
Aluminium	Black, RAL 9011, powder coated	938.02.373

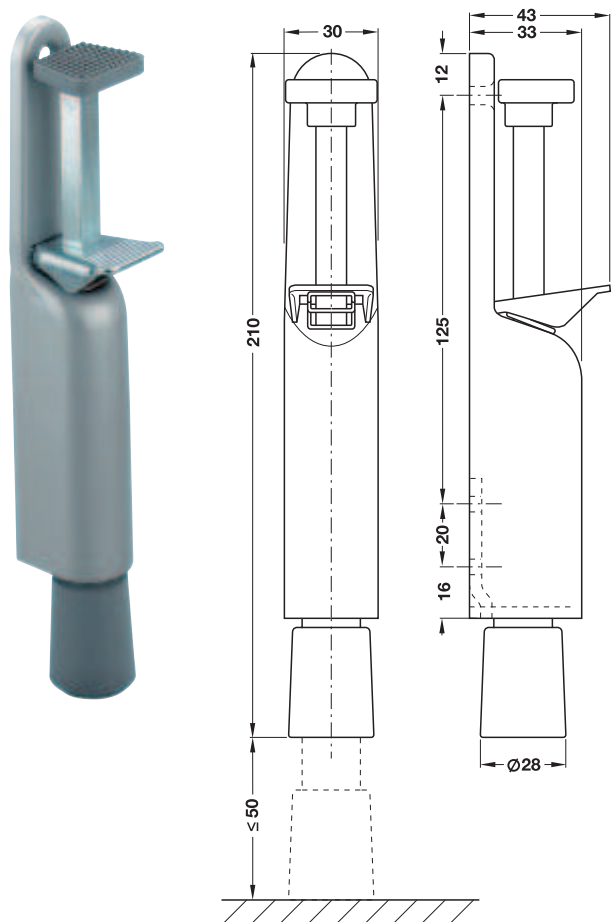
→ Model 1110



- Version: With spring loaded buffer, black
- Area of application: For interior and external doors
- Material: Aluminium
- Door weight: ≤120 kg
- Installation: For screw fixing to the floor
- Fixing material supplied

Material	Finish	Cat. No.
Aluminium	Silver coloured anodized	938.02.311
	Silver coloured enamelled	938.02.319

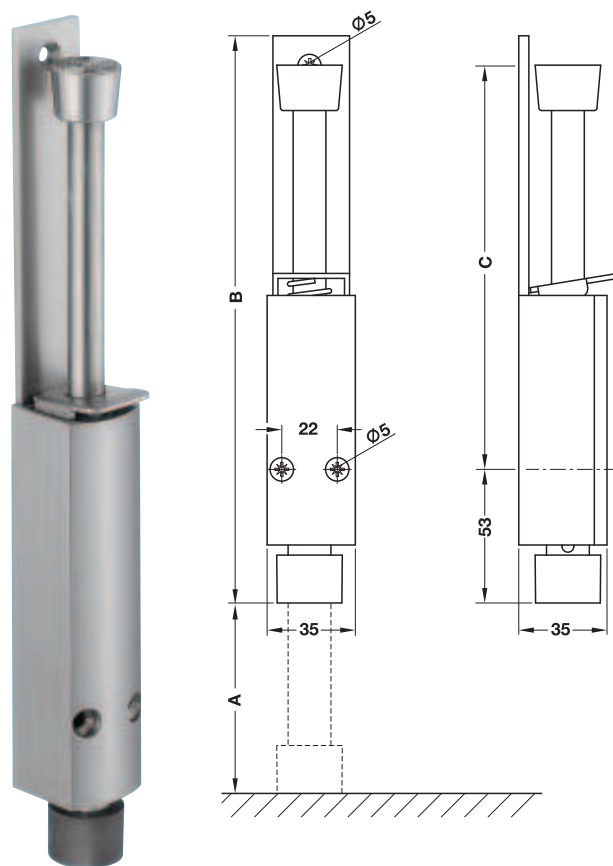
→ Model 1034



- Version: For holding the door at any opening angle
- Material: Case: Steel, bolt: Steel, stopper: Rubber
- Door weight: ≤40 kg
- Travel: 50 mm
- Installation: For screw fixing to the door
- Fixing material supplied

Material	Finish	Cat. No.
Stainless steel	Matt	938.02.000
Steel	Silver coloured enamelled	938.02.001
	Dark brown enamelled	938.02.004

→ Model 1223/1225



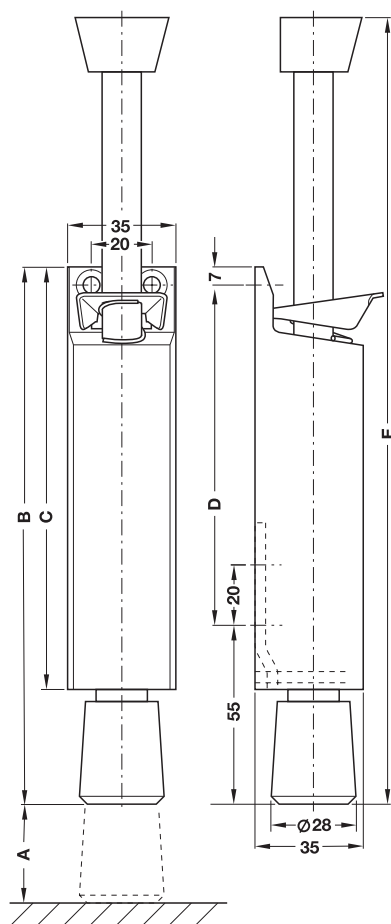
- Version: For holding the door at any opening angle
- Material: Case: Aluminium, bolt: Stainless steel, stopper: Rubber
- Finish: Case: Lacquered, bolt: Rust-proof, stopper: Grey
- Door weight: ≤40 kg
- Travel: 60 or 90 mm
- Installation: For screw fixing to the door
- Fixing material supplied

Technical data

	Model 1223	Model 1225
A	60 mm	90 mm
B	225 mm	292 mm
C	160 mm	227 mm

Material	Finish	Dim. A mm	Cat. No.
Aluminium	Stainless steel coloured anodized	60	938.02.320
	Silver coloured enamelled	60	938.02.329
	Stainless steel coloured anodized	90	938.02.330
	Silver coloured enamelled	90	938.02.339

→ Model 1044/1045/1046



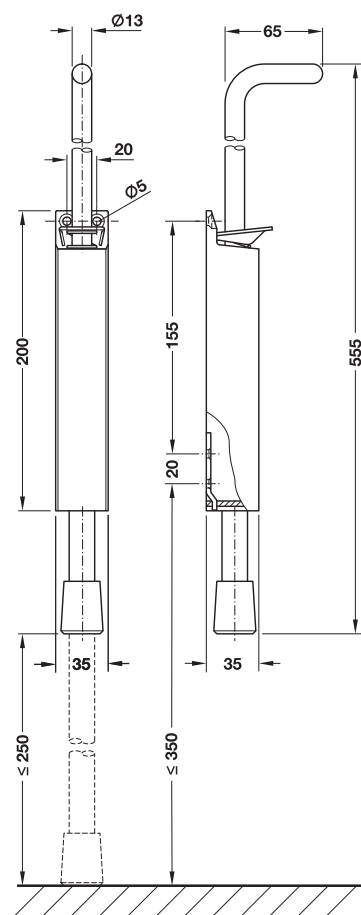
- Version: For holding the door at any opening angle
- Material: Case: Aluminium, bolt: Stainless steel, stopper: Rubber
- Finish: Case: Lacquered, bolt: Rust-proof, stopper: Grey
- Door weight: ≤80 kg
- Travel: 60, 90 or 120 mm
- Installation: For screw fixing to the door
- Fixing material supplied

Technical data

	Model 1044	Model 1045	Model 1046
A	60 mm	90 mm	120 mm
B	177 mm	207 mm	237 mm
C	140 mm	170 mm	200 mm
D	115 mm	145 mm	175 mm
E	260 mm	315 mm	370 mm

Material	Finish	Lift mm	Cat. No.
Aluminium	Silver coloured enamelled	60	938.02.101
		90	938.02.111
		120	938.02.121

→ Model 1048



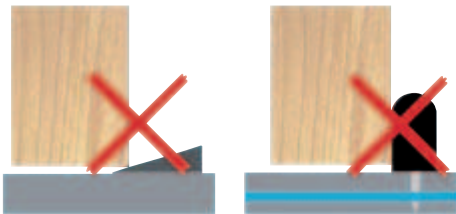
- Area of application: For operation from a wheelchair or for extremely large height differences
- Version: Also suitable for doors with door closer
- Material: Aluminium
- Travel: 250 mm
- Door weight: ≤80 kg
- For door width: ≤1,200 mm
- For door height: ≤2,200 mm
- Installation: Screw to door with 4 screws, distance from lower door edge to stopper min. 20 mm

Material	Finish	Cat. No.
Aluminium	Stainless steel coloured anodized	938.02.360
	Silver coloured enamelled	938.02.369
	Silver coloured anodized	938.02.361

Porti 400



- Brakes and stops the door at any required position
- Protection from risks and damages of doors opened forcefully
- The key advantage: No damages to floors and floor coverings



- Area of application: For wooden doors and wooden or metal frames, for rebated and flush doors
- Material: Guide track: Aluminium, lever: Steel, damper: Polyurethane elastomer
- Finish: Guide track: Anodized, lever: Bright galvanized
- Opening angle: $\leq 120^\circ$, (continuously adjustable)
- Door width: 720–985 mm
- Door weight: ≤ 30 kg
- Dim.: Groove: 635 x 15 x 12 mm
- Top rebate gap 3–10 mm

Note

When selecting the hinges please take the load of the opening angle restraint into consideration.

Model	Cat. No.
Porti 400	938.41.000

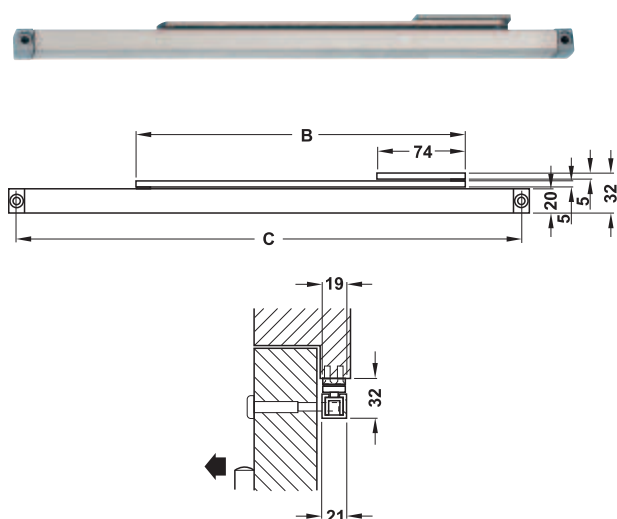
Supplied with

- 1 Porti 400 door opening angle restraint
- 1 Set of mounting material (for wooden and metal frames)



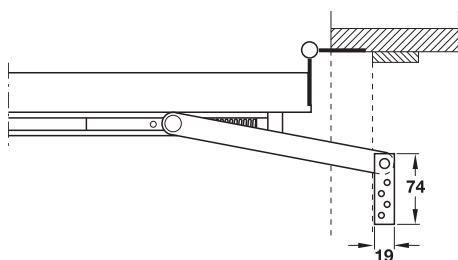
Door opening angle restraint

→ For screw fixing



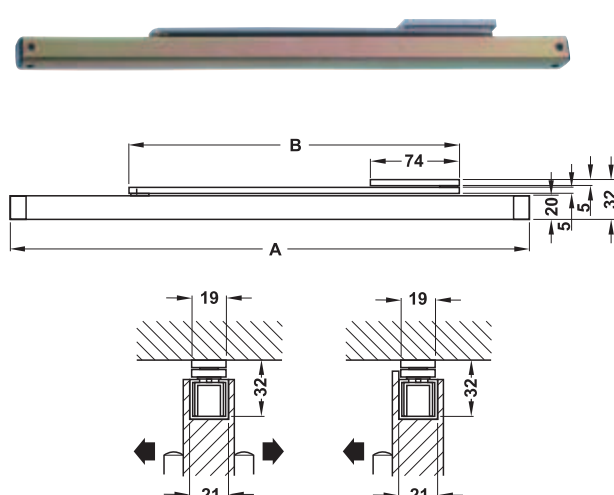
- Area of application: For single action doors, for interior and external doors
- Material: Housing and arm: Stainless steel, arm mounting plate: Zinc alloy
- Finish: Matt
- Version: Medium duty, with or without hold open function, holding force adjustable
- Opening angle: 85–110°
- Door thickness: 35–57 mm
- Mounting: For DIN left and DIN right hand use
- Installation: Running track for screw fixing to door leaf, arm mounting plate for screw fixing to door frame
- Fixing material supplied

Installation



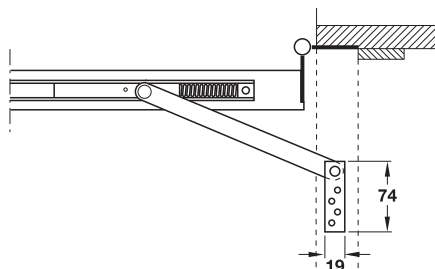
Suitable for	Dim. C mm	Dim. B mm	Cat. No.
With hold open function			
Opening 687–838 mm	448	373	938.11.520
Opening 839–991 mm	492	480	938.11.530
Opening 992–1143 mm	530	570	938.11.540
Without hold open function			
Opening 687–838 mm	448	373	938.11.420
Opening 839–991 mm	492	480	938.11.430
Opening 992–1143 mm	530	570	938.11.440

→ For concealed installation



- Area of application: For single action and double action doors, for interior and external doors
- Material: Housing: Steel, arm: Stainless steel, arm mounting plate: Zinc alloy
- Finish: Housing: Bronze coloured, arm and arm mounting plate: Matt
- Version: Medium duty, with or without hold open function, holding force adjustable
- Opening angle: 85–110°
- Door thickness: 35–57 mm
- Mounting: For DIN left and DIN right hand use
- Installation: Running track for recess installation in door leaf, arm mounting plate for screw fixing to door frame
- Fixing material supplied

Installation



Suitable for	Dim. A mm	Dim. B mm	Cat. No.
With hold open function			
Opening 687–838 mm	468	373	938.11.220
Opening 839–991 mm	513	480	938.11.230
Opening 992–1143 mm	551	570	938.11.240
Without hold open function			
Opening 687–838 mm	468	373	938.11.120

