



Wall mounted TV support brackets and lift systems



High-quality and sophisticated room concepts for yachts, hotels, living rooms and bedrooms can be individually implemented using Häfele TV fittings.

Flat screen monitors that are installed out of sight in a sideboard are moved upwards and rotated manually or using a remote control. Flat screen monitors that are mounted on the wall can be swivelled or tilted in the required direction.

Diagonal screen size	VESA standard	Load bearing capacity kg	Suitable for curved TV	Page
Electric lift systems				
–	Universal	65		► FF 7.105 FF 7.106
–	Universal	80		► FF 7.108
	50 x 50, 75 x 75, 100 x 100, 200 x 100, 200 x 200	50		► FF 7.108
–	200 x 100, 200 x 200	25		► FF 7.109
Manual lift systems				
≤22"	75 x 75, 100 x 100	2.5–6.5		► FF 7.110
Wall mounted TV support bracket, extending, swivelling and tilting				
10"–32"	75 x 75–200 x 200	15	✓	► FF 7.111
23"–52"	75 x 75–400 x 400	25	✓	► FF 7.111
37"–65"	universal	61		► FF 7.111
Wall mounted TV support bracket, tilting				
37"–65"	100 x 100–600 x 400	35	✓	► FF 7.113
Ceiling mounted TV support bracket, movable				
32"–60"	200 x 200–600 x 400	35	✓	► FF 7.113
TV pole, swivelling				
–	100 x 100, 200 x 100, 200 x 200	25		► FF 7.113
Extending TV turntable, installation in furniture				
≤19" or 22"	75 x 75, 100 x 100	8		► FF 7.114

Electric lift system

Load bearing capacity 65 kg

- > Suitable for: Flat screen monitors
- > VESA standard: Universal
- > Lift: 635 or 965 mm
- > Distance: Between rear panel and TV: 117 mm
- > Mains supply: 220–240 V/50–60 Hz
- > Version: Socket with automatic shutdown for TV, flap deflector, removable
- > Material: Sheet steel
- > Finish: Powder coated
- > Colour: Graphite black, RAL 9011
- > TV switches on/off automatically when the lift is raised/lowered

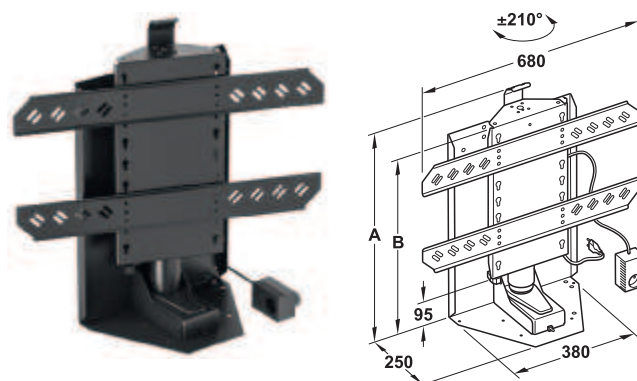
Installation

Recommended safety clearance between cabinet and TV >25 mm

Vitaflex

	Max. TV height		
	Without flap deflector	With flap deflector	With height adjustable flap deflector
	mm	mm	mm
421.68.205	514	583	600
421.68.206	679	748	920
421.68.215	466	537	600
421.68.216	631	702	890

→ Rotates through $\pm 210^\circ$ manually



- > Adjustment facility: Rotates through $\pm 210^\circ$ manually

Supplied with

- 1 electric lift system
- 1 manual switch
- 1 radio remote control 433 MHz

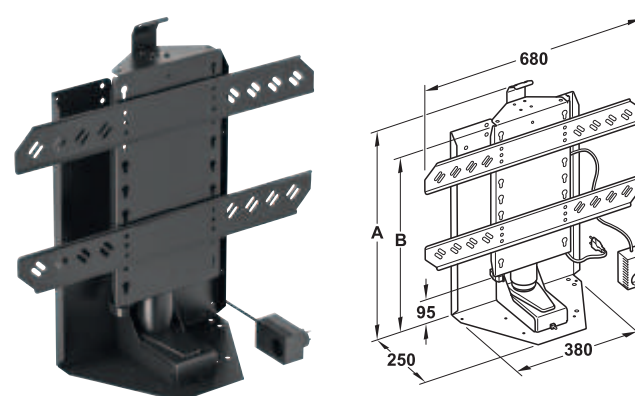
Lift mm	Dim. A mm	Dim. B mm	Cat. No.
635	698	629	421.68.205
965	863	794	421.68.206

Packing: 1 piece

Order reference

Operating unit 421.68.289 for programming the lift height restriction available as accessory.

→ Fixed



Supplied with

- 1 electric lift system
- 1 manual switch

Lift mm	Dim. A mm	Dim. B mm	Cat. No.
635	652	581	421.68.215
965	817	746	421.68.216

Packing: 1 piece

Order reference

Radio remote control 421.68.281 available as accessory.
Operating unit 421.68.289 for programming the lift height restriction available as accessory.

Flap deflector	► FF 7.107
Radio remote control	► FF 7.107
Operating unit for programming	► FF 7.107
Shut-off strip	► FF 7.119

Electric lift system
Load bearing capacity 65 kg

Vitaflex

Extremely narrow TV lift with low installation depth

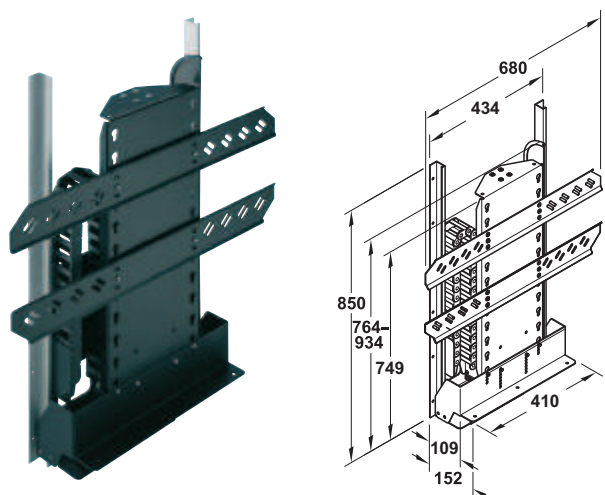


- > Suitable for: Flat screen monitors
- > VESA standard: Universal
- > Distance: Between rear panel and TV: 109 mm
- > Mains supply: 220–240 V/50–60 Hz
- > Version: Socket with automatic shutdown for TV, flap deflector, removable
- > Material: Sheet steel
- > Finish: Powder coated
- > Colour: Graphite black, RAL 9011
- > Screen height: Without flap deflector max. 631 mm, with flap deflector max. 700 mm

7



→ Fixed



Note
Guide profiles can only be shortened if the lift is also reduced accordingly.

- Supplied with**
- 1 electric lift system
 - 1 manual switch
 - 1 radio remote control 433 mHz
 - 1 drag chain for cable guidance
 - 2 guide profiles

Lift mm	Cat. No.
790	421.68.218

Packing: 1 piece

Order reference
Operating unit 421.68.289 for programming the lift height restriction available as accessory.

Operating unit for programming	► FF 7.107
Shut-off strip	► FF 7.119

Flap deflector with height adjustment

Screen heights up to 920 mm possible.



> Area of application: For use in combination with TV lift system for increased screen height

Installation

1. Remove flap deflector mounted on lift.
2. Mount height adjustable flap deflector.
3. Loosen screw and adjust required height.

Suitable for use with	max. screen height mm
421.68.205	600
421.68.206	920
421.68.215	600
421.68.216	890

Colour	Cat. No.
Graphite black, RAL 9011	421.68.360

Packing: 1 piece

Radio remote control

For electric lift systems and electric lifts



Supplied with

1 remote control, 1 receiver with cable

Frequency MHz	Range m	Dim. (L x W x H) mm	Cat. No.
433	6	65 x 36 x 15	421.68.281

Packing: 1 piece

Operating unit for programming

For programming the lift height restriction of electric lift systems



Dim. (L x W x H) mm	Cat. No.
100 x 37 x 20	421.68.289

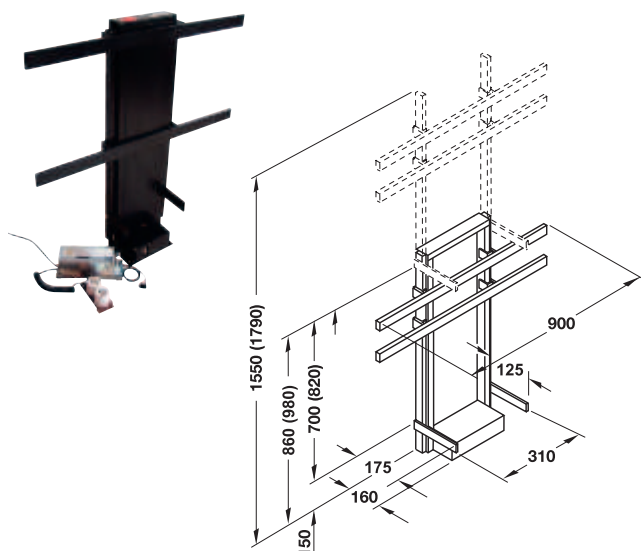
Packing: 1 piece

Electric lift system

Load bearing capacity 80 kg



- > Area of application: For flat screen monitors, up to max. size of 900 x 700 mm (W x H) (lift 700 mm) and 1,000 x 820 mm (W x H) (lift 820 mm)
- > Version: Continuously adjustable lift, with 2 sockets (each 350 W) for built-in devices, one of which with automatic shutdown, potential free control, quick cut-out switch (permanent pressure)
- > Material: Sheet steel
- > Finish: Powder coated
- > Colour: Jet black, RAL 9005
- > Mains supply: 230 V / 50 Hz
- > VESA standard: Universal



Installation

The lift must be fixed to the rear panel and with the bottom connecting plates to the cabinet for stability reasons. A plate must be fitted to the lower pair of arms on which the flat screen monitor securely rests.

Supplied with

- 1 lift system
- 1 electronic unit
- 1 rocker switch
- 1 set of installation instructions

Travel mm	Dim. (W x H) mm	Cat. No.
700	900 x 860	421.68.353
820	900 x 980	421.68.354

Packing: 1 piece

Order reference

Please order radio remote control Cat. No. 421.65.909 separately.

Available on request, e.g.:

- > With lid opening mechanism
- > Lift for ceiling installation

Radio remote control

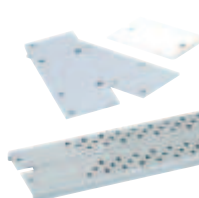
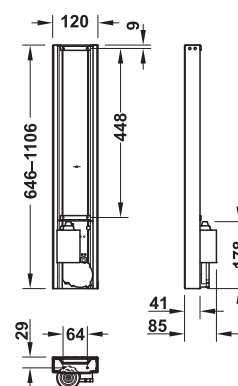
► FF 7.116

Electric lift system

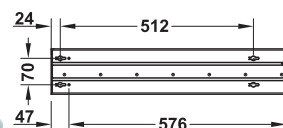
Load bearing capacity 50 kg



Lift system



VESA mounting plate



- > Area of application: For installation in furniture, for raising and lowering of flat screen monitors and small cabinets
- > Material: Steel
- > Colour: Silver coloured
- > Travel: 460 mm
- > Travel speed: 25 mm/s
- > Version: Lift cannot be reduced
- > Input voltage: 110-240 V, 50-60 Hz
- > VESA standard: 50 x 50 mm, 75 x 75 mm, 100 x 100 mm, 200 x 100 mm and 200 x 200 mm

Supplied with

- 1 lift system
- 1 radio remote control
- 1 rocker switch

	Packing	Cat. No.
Lift system	1 piece	421.68.425
VESA mounting plate	1 set	421.68.431

Electric lift system

Load bearing capacity 25 kg



- > Area of application: For lifting and lowering of flat screen monitors, lift 700 mm to 900 mm x 700 mm (W x H), lift 1,000 mm to 1,200 x 1,000 mm (W x H)
- > Material: Steel
- > Colour: Black
- > Travel speed: 28 mm/second
- > Input voltage: 110–240 V, 50–60 Hz
- > Installation: Extending out of the cabinet or turned and suspended from the ceiling
- > VESA standard: 200 x 100 mm, 200 x 200 mm

Note

Please order suitable VESA mounting plate for dimensions varying from the VESA standard:

VESA standard: 300 x 300 mm, 400 x 100 mm, 400 x 200 mm, 400 x 300 mm, 400 x 400 mm, 600 x 100 mm, 600 x 200 mm, 600 x 400 mm



Lift system



VESA mounting plate

	Travel mm	Dim. A mm	Cat. No.
Lift system	700	600–1300	421.68.454
	1000	750–1750	421.68.453
VESA mounting plate	–	–	421.68.433

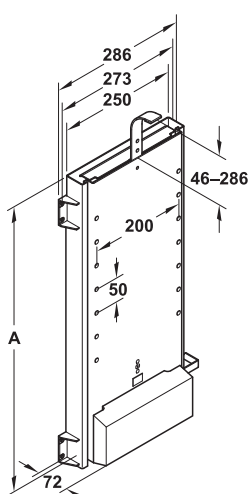
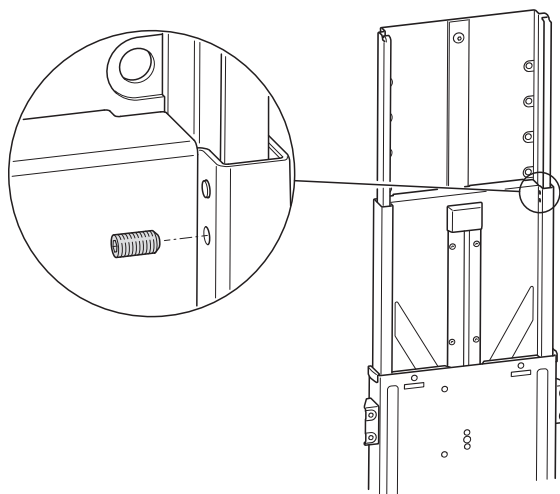
Packing: 1 piece

Order reference

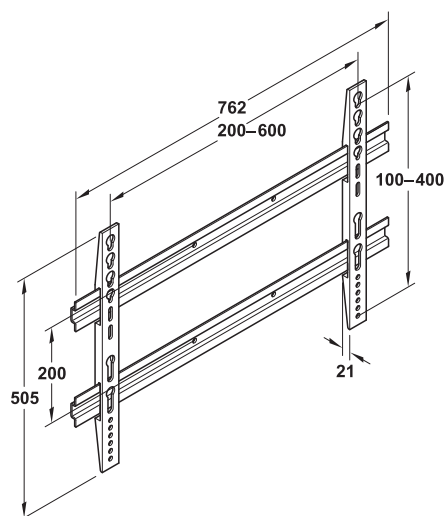
Please order radio remote control Cat. No. 421.68.426 separately.

Installation

Please mount supplied screw on both sides with wide screen monitors for stabilising reasons.



Lift system



VESA mounting plate

Radio remote control



- > Area of application: For electric lift systems Cat. Nos. 421.68.454, 421.68.453, 421.68.425
- > Frequency: 433.92 MHz

Supplied with

- 1 remote control
- 1 receiver with cable
- 1 rocker switch

Material	Colour	Cat. No.
Plastic	Black	421.68.426

Packing: 1 piece

Push TV lift, manually rotating

Load bearing capacity 2.5–6.5 kg



Lowere flat screen monitors, pictures or mirrors into cabinets



- > Lift: 538 mm
- > Adjustment facility: By adding or removing weights
- > Operation: Manually activated push-to-lift mechanism, release distance 2 mm
- > Swivelling range: $\pm 112.5^\circ$
- > Material: Steel
- > Colour: Black

Supplied with

- 1 Push TV lift
- 1 weight pack (10 x 110 g)
- 1 cable guide set
- 1 set of installation instructions

Suitable for	Cat. No.
Flat screen monitors ≤ 45 cm height and diagonal screen size $\leq 22"$	421.68.375

Packing: 1 piece

Order reference

Additional weight packs are required for lightweight flat screen monitors:

Total weight	Number of additional weight packs		
	Without bracket	Fixed bracket	Tilting bracket
Min.	3 kg	2.6 kg	2.5 kg
2.5–3.0	—	3	3
3.0–3.5	3	3	3
3.5–4.0	3	3	2
4.0–5.0	2	2	2
5.0–5.5	1	1	1
5.5–6.0	1	1	—
Max.	6.5 kg	6.5 kg	6.5 kg

> VESA standard: 75 x 75 mm and 100 x 100 mm

Material	Colour	Cat. No.
Steel	Black	421.68.379

Packing: 1 or 10 pieces

> VESA standard: 75 x 75 mm and 100 x 100 mm

Material	Colour	Cat. No.
Steel	Black	421.68.378

Packing: 1 or 10 pieces

Material	Colour	Cat. No.
Steel	Black	421.68.376

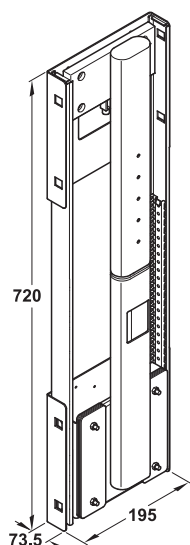
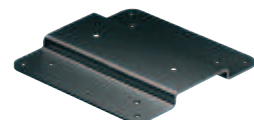
Packing: 1 or 5 sets

Material	Colour	Cat. No.
Steel	Black	421.68.377

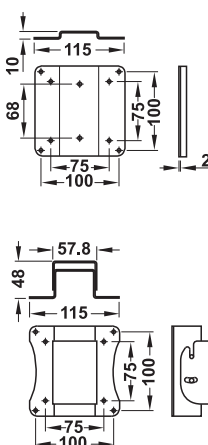
Packing: 1 or 10 pieces



→ Fixed Bracket



→ Tilting Bracket



→ Weight pack 10 x 110 g

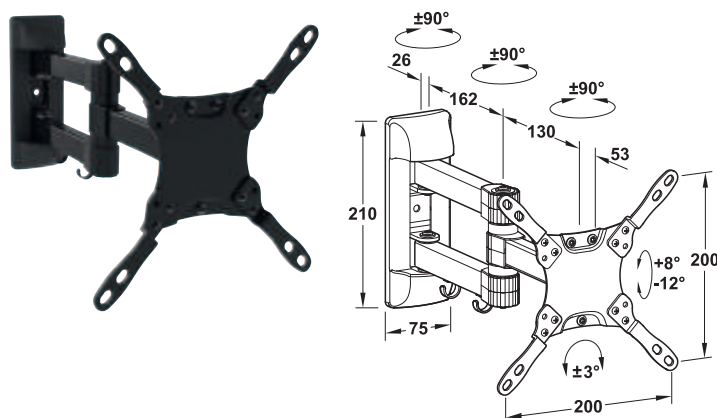
Order reference

If more than 2 weight packs are required, order 1 additional weighting plate separately.

→ Additional weighting plate

Wall mounted TV support bracket, extending, swivelling and tilting

→ 10"-32"



- > Adjustment facility: Tilting angle: +8° to -12°, swivelling: ±90°, rotating: ±3°
- > VESA standard: 75 x 75 mm, 100 x 100 mm, 200 x 100 mm, 200 x 200 mm
- > Material: Steel
- > Colour: Black
- > Load bearing capacity: 15 kg

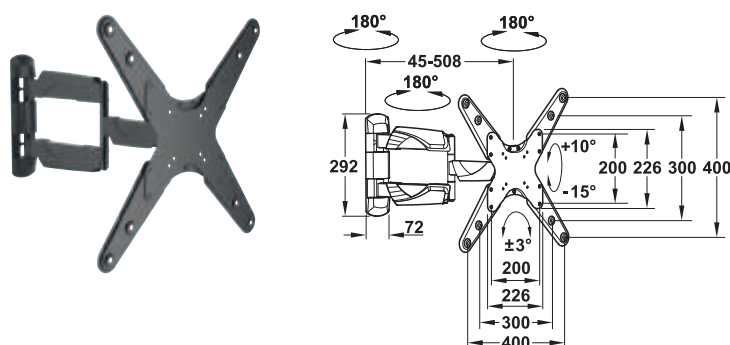
Note

Suitable for use with Curved TV

Area of application	Cat. No.
For flat screen monitors, with diagonal screen size 10"-32"	817.10.330

Packing: 1 piece

→ 23"-52"



- > Adjustment facility: Tilting angle: +10° to -15°, swivelling: ±90°, rotating: ±3°
- > VESA standard: 75 x 75 mm, 100 x 100 mm, 200 x 100 mm, 200 x 200 mm, 300 x 100 mm, 300 x 200 mm, 300 x 300 mm, 400 x 100 mm, 400 x 200 mm, 400 x 300 mm or 400 x 400 mm
- > Material: Steel
- > Colour: Black
- > Load bearing capacity: 25 kg

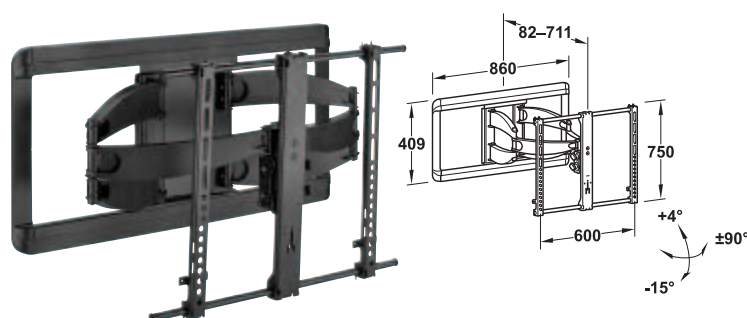
Note

Suitable for use with Curved TV

Area of application	Cat. No.
For flat screen monitors, with diagonal screen size 23"-52"	817.10.331

Packing: 1 piece

→ 46"-90"

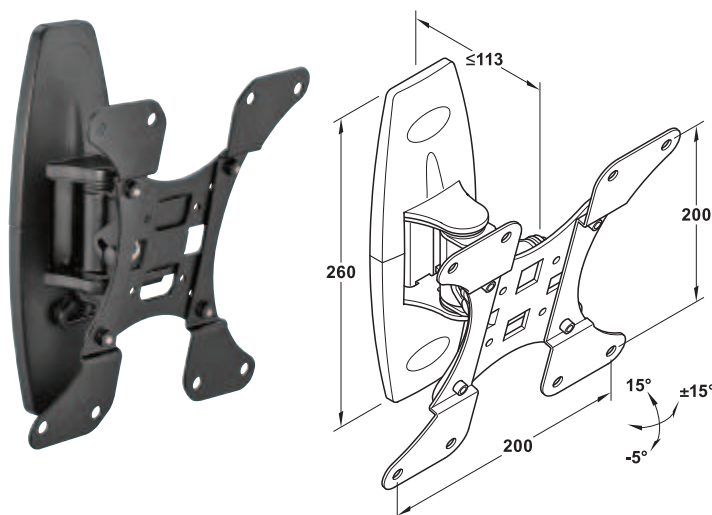


- > Adjustment facility: Tilting angle: +5° to -15°, swivelling: ±90°, the screen can be moved to the left or right after installation
- > Version: Concealed cable guidance in bracket arm and joint
- > VESA standard: 100 x 100 mm, 200 x 200 mm, 300 x 200 mm, 300 x 300 mm, 400 x 200 mm, 400 x 300 mm, 400 x 400 mm, 500 x 400 mm, 600 x 400 mm
- > Material: Steel
- > Colour: Black
- > Load bearing capacity: 68 kg

Area of application	Cat. No.
For flat screen monitors, with diagonal screen size 46"-90"	817.01.380

Packing: 1 piece

Wall mounted TV support bracket, tilting
→ 10"-32"

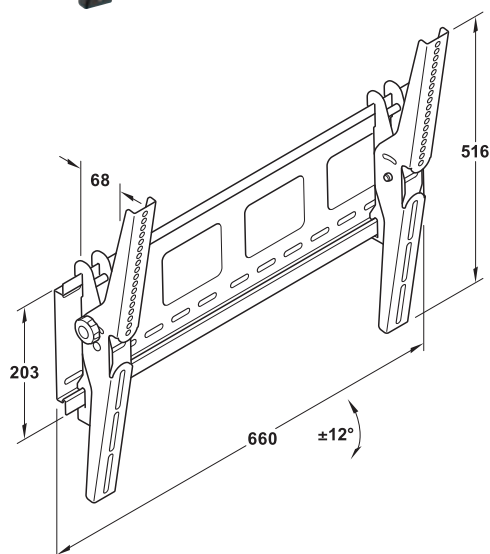
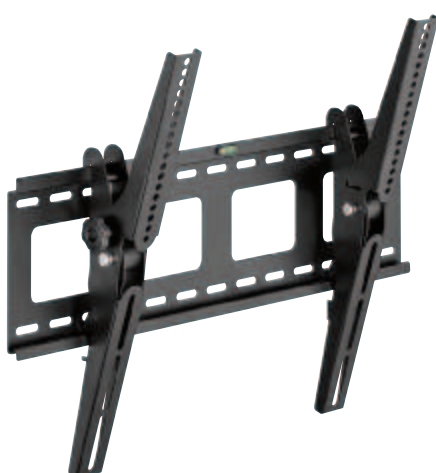


- > Adjustment facility: Tilting angle: +15° to -5°, swivelling: ±15°
- > VESA standard: 100 x 100 mm, 200 x 100 mm, 200 x 200 mm
- > Material: Steel
- > Finish/colour: Powder coated, black
- > Load bearing capacity: 27 kg
- > Installation: For screw fixing

Area of application	Cat. No.
For flat screen monitors with diagonal screen size of 10" to 32"	817.35.301

Packing: 1 piece

→ 32"-55"

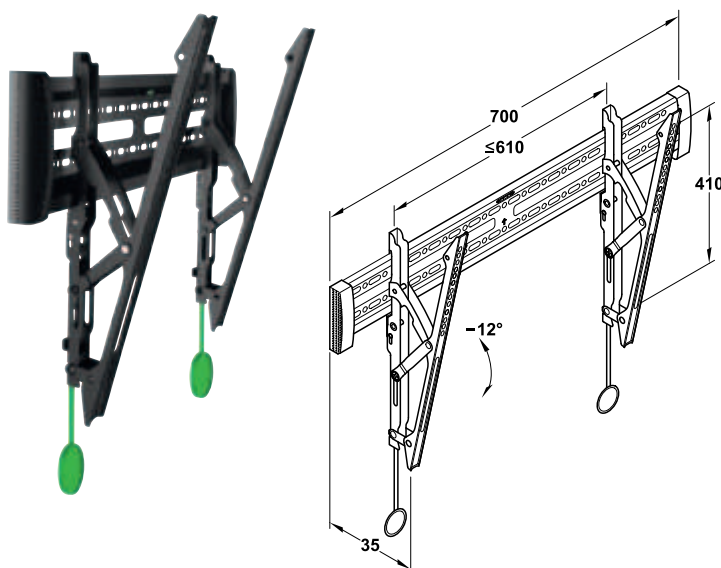


- > Adjustment facility: Tilting angle: ±12°
- > VESA standard: 600 x 400 mm
- > Material: Steel
- > Finish/colour: Powder coated, black
- > Load bearing capacity: 79 kg
- > Installation: For screw fixing

Area of application	Cat. No.
For flat screen monitors with diagonal screen size of 32" to 55"	817.35.322

Packing: 1 piece

Wall mounted TV support bracket, tilting
 → 37"-65"



- > Adjustment facility: Tilting angle: -12°
- > VESA standard: 100 x 100 mm, 200 x 100 mm, 200 x 200 mm, 300 x 100 mm, 300 x 200 mm, 300 x 300 mm, 400 x 100 mm, 400 x 200 mm, 400 x 300 mm, 400 x 400 mm, 600 x 200 mm, 600 x 300 mm or 600 x 400 mm
- > Material: Steel
- > Colour: Black
- > Load bearing capacity: 35 kg

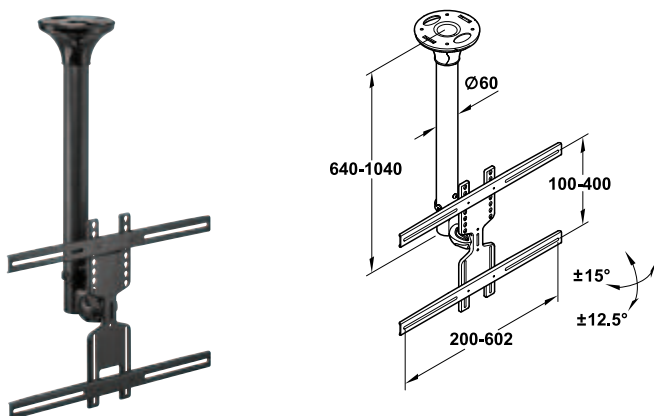
Note

Suitable for use with Curved TV

Area of application	Cat. No.
For flat screen monitors, diagonal screen size 37"-65"	817.10.352

Packing: 1 piece

Ceiling mounted TV support bracket, movable
 → 32"-60"



- > Adjustment facility: Height: 640-1,040 mm, tilting angle: $\pm 12.5^\circ$, swivelling: $\pm 15^\circ$
- > VESA standard: 200 x 200 mm, 300 x 200 mm, 400 x 200 mm, 400 x 300 mm, 400 x 400 mm, 600 x 200 mm, 600 x 300 mm or 600 x 400 mm
- > Material: Steel
- > Colour: Black
- > Load bearing capacity: 35 kg

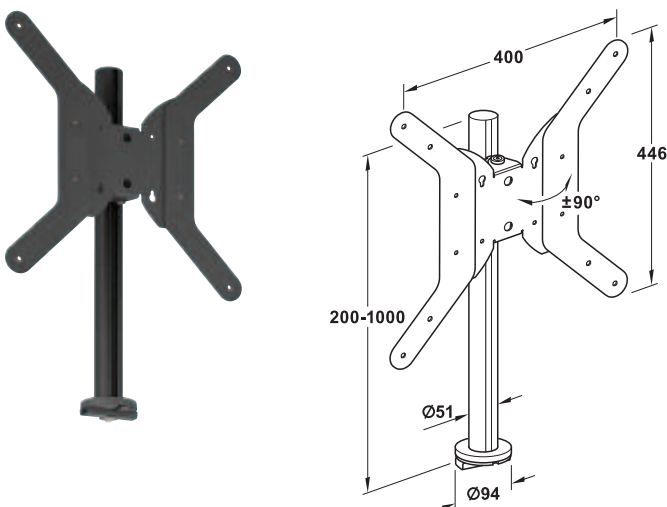
Note

Suitable for use with Curved TV

Area of application	Cat. No.
For flat screen monitors, diagonal screen size 32"-60"	817.11.320

Packing: 1 piece

TV pole, swivelling



Order reference

Other pole heights available on request.

Offers the perfect view of the screen from different positions in the room



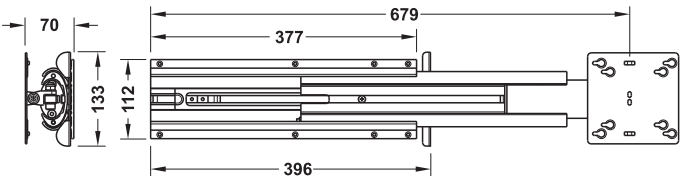
- > Area of application: For installation on a sideboard, table or the like
- > Adjustment facility: Swivels by 180° , the height of the support carriage can be adjusted continuously at the pole depending on the screen size
- > VESA standard: 100 x 100 mm, 200 x 100 mm, 200 x 200 mm, optional with adapter 400 x 400 mm
- > Material: Pole: Aluminium, support carriage and adapter: Steel
- > Colour: Black
- > Load bearing capacity: 25 kg
- > Max. screen height: 1,000 mm

	Cat. No.
Pole and support carriage	818.31.320
Vesa adapter 400 x 400 mm	818.31.390

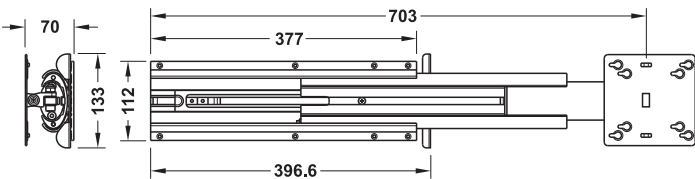
Packing: 1 set

Extending TV turntable

→ Load bearing capacity 8 kg
For screw fixing to side panels



For flat screen monitors with diagonal screen size ≤19"



For flat screen monitors with diagonal screen size ≤22"

- > Material: Rails: Aluminium, glide: Plastic
- > Version: The extension is firmly held in position when it is pushed in
- > Swivelling range: 180° vertical and horizontal
- > Installation depth: 403 mm
- > VESA standard: 75 x 75 mm and 100 x 100 mm

Area of application	Cat. No.
For flat screen monitors, diagonal screen size ≤19" travel: 502 mm	421.99.951
For flat screen monitors, diagonal screen size ≤22" travel: 437 mm	421.99.955

Packing: 1 piece